

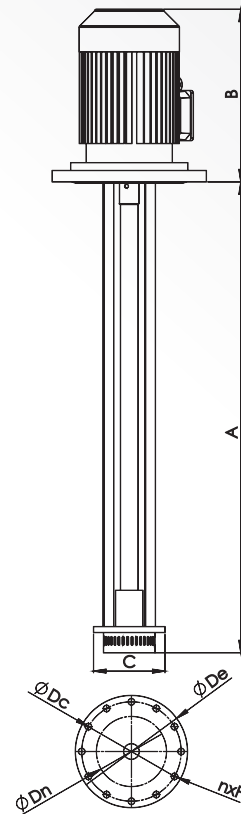
## FVM VERTICAL MIXER

### DIMENSIONS

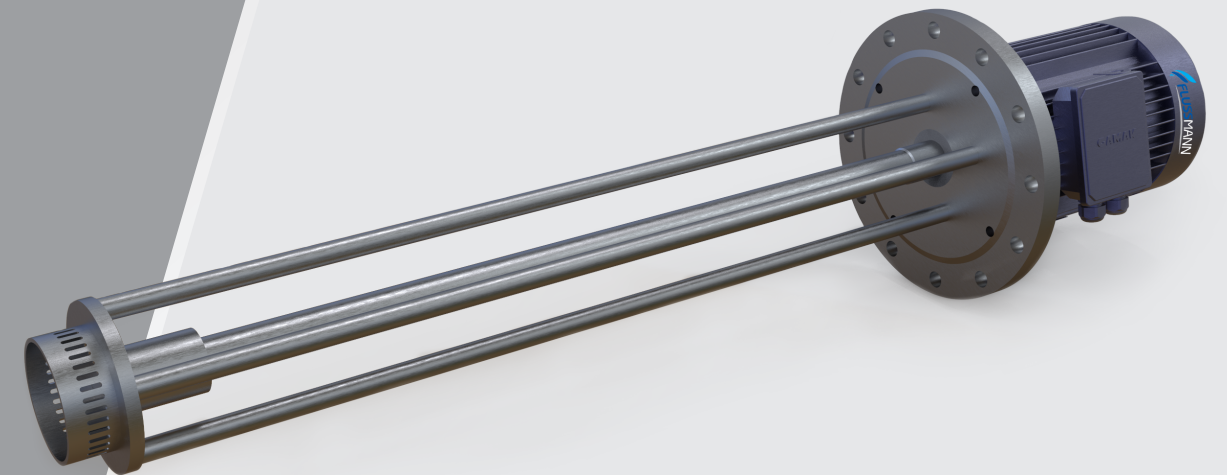
### CAPACITY

| TYPE       | Ø DN | Ø De | Ø Dc | n*f    | A    | B   | Ø C |
|------------|------|------|------|--------|------|-----|-----|
| FVM 30 011 | 150  | 250  | 225  | 4*11   | 750  | 258 | 125 |
| FVM 30 040 | 200  | 310  | 280  | 4*13   | 850  | 355 | 170 |
| FVM 30 075 | 250  | 360  | 330  | 4*13   | 1200 | 450 | 185 |
| FVM 30 185 | 50   | 430  | 390  | 4*17,5 | 1400 | 525 | 210 |

| 1 cpu  | 3000 cpu | Additional ag. | Power kw | Speed rpm |
|--------|----------|----------------|----------|-----------|
| 300lt  | 100lt    | 200lt          | 1,1      | 3000      |
| 500lt  | 300lt    | 400lt          | 4        | 3000      |
| 1000lt | 750 lt   | 900lt          | 7,5      | 3000      |
| 1500lt | 1000lt   | 1200 lt        | 18,5     | 3000      |



## FVM VERTICAL MIXER



YOUR SOLUTION PARTNER

## FVM VERTICAL MIXER

### APPLICATION

- » The FVM series of the high shear vertical mixers present a solution for the processes of dispersion, emulsifying, homogenisation and disintegration of solids in a wide range of products in the food processing, cosmetics, pharmaceutical and fine chemistry industries.

### DESIGN AND FEATURES

- » High shear, particle size reduction to less than 100 microns.
- » Various types of interchangeable heads.
- » Slotted head (standard).
- » Motors: IEC B5, IP55, F-class insulation

### OPTIONS

- » Circulation propeller.
- » Downthrust propeller.
- » Disintegrating head.
- » Upper suction head.
- » Motor shroud.
- » Other motor protection

### WORKING PRINCIPLE

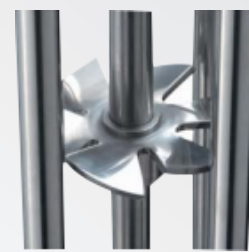
- » The high speed and adjusted tolerances between the rotor and the stator result in high suction potential, the product is suctioned from the bottom of the tank and driven to the centre of the head.
- » The product is suctioned from the lower part of the head and the rotor thrusts it radially.
- » Passing through the openings of the stator the product is mechanically sheared. the particles are sheared by the rotor at 20 m/s.

### MATERIALS

- » Parts in contact with the product : AISI316L
- » Guide bushing : PTFE
- » V-ring : NBR



CIRCULATION PROPELLER



DOWNTHRUST PROPELLER.



- » This head is the most popular combination high shear and flow rate efficiency

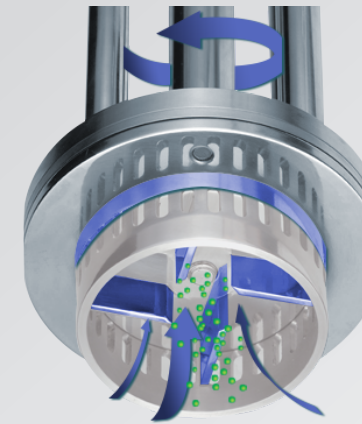


- » This head is suitable for use with higher viscosity products than any other head design

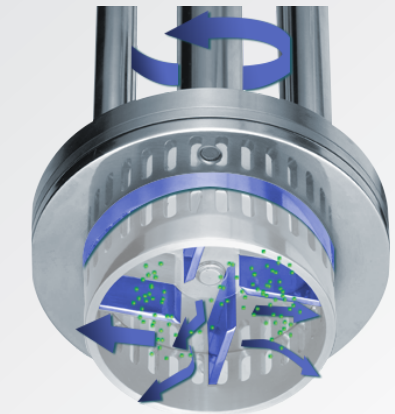


- » This head used for low viscosity products

## FVM VERTICAL MIXER



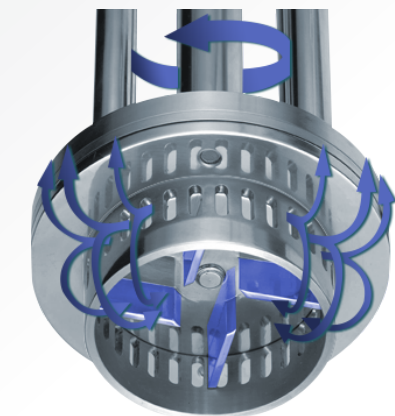
- » This head is the most popular combination high shear and flow rate efficiency



- » The product is sheared as it is forced through the stator by the rotor



- » The product is returned radially through the stator screen opening at high velocity



- » A vigorous flow is generated below the liquid surface

