

## FDP POSITIVE DISPLACEMENT PUMPS

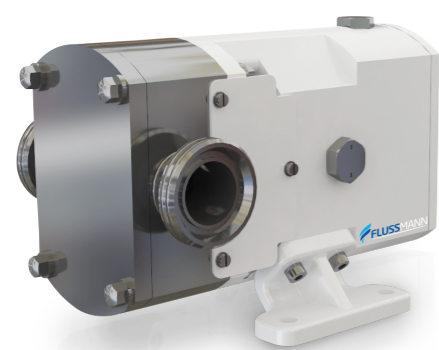
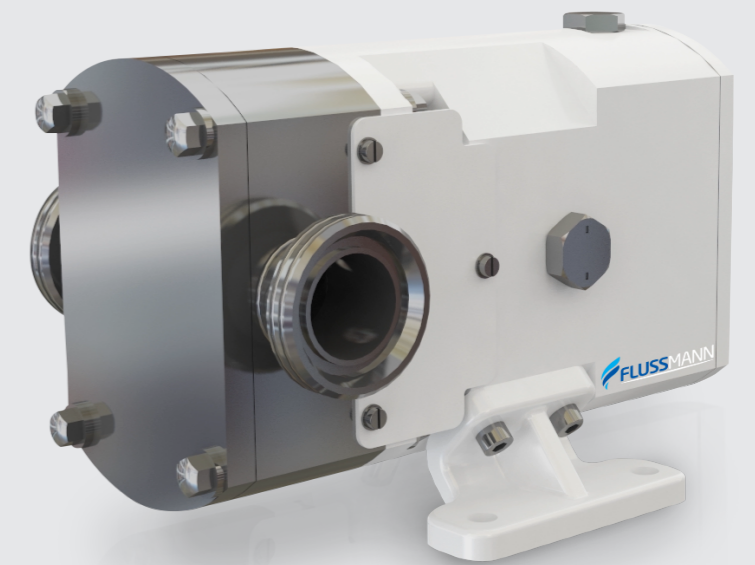
	Distance Between Axes (mm)	Lobe External Diameter (mm)	Thread Minor Diameter (mm)	Seal Internal Diameter (mm)	Distance Between Lobes (mm)	Lobe Height (mm)
FDP+ A 25	60	83,6	36	30	0,2	38
FDP+ A 40						42
FDP+ A 50						54
FDP+ B 40	75	104,5	45	35	0,25	44
FDP+ B 50						54
FDP+ B 65						70
FDP+ C 65	96	133,7	57,6	40	0,35	72
FDP+ C 80						85
FDP+ C 100						104
FDP+ D 100	120	167,1	72	53	0,45	104
FDP+ D 125						130
FDP+ D 150						155

## PERFORMANCE CURVE

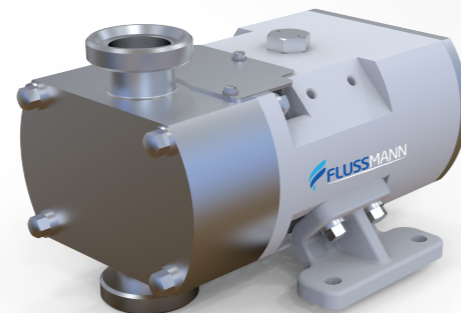
P BAR	10	FDP+ A-25		FDP+ B-40		FDP+ B-50	FDP+ C-80		FDP+ D-100		FDP+ D-15
	7	FDP+ A-40		FDP+ B-65			FDP+ C-65		FDP+ C-100	FDP+ D-125	
0			10			21		37		52	82
Q m3/h											



## FDP+ POSITIVE DISPLACEMENT PUMPS



HORIZONTAL



VERTICAL

YOUR SOLUTION PARTNER

## FDP POSITIVE DISPLACEMENT PUMPS

### APPLICATION

- » The FDP pump is a lobe rotor positive displacement pump of a sanitary design suitable for use in the dairies, foodprocessing, beverage, pharmaceutical and fine chemicals industries.
- » This pump is perfect for managing all kinds of fluid, of either low or high viscosity, in the food-processing, dairies, and cosmetics industries, as well as for filtering and bottling applications.

### OPTIONS

- » Vertical support.
- » Rectangular nozzle.
- » Gaskets: FPM
- » Relief valve on the front cover or external by-pass.
- » Bi-wing lobes.
- » Heating chamber.
- » Trolley and/or control panel.
- » Connections: Clamp, SMS, etc.
- » Mechanical seals: SiC/SiC or TuC/SiC.
- » flushed mechanical seal (quench), double mechanical seal, lip seal (FPM or PTFE), gland packing, O-ring

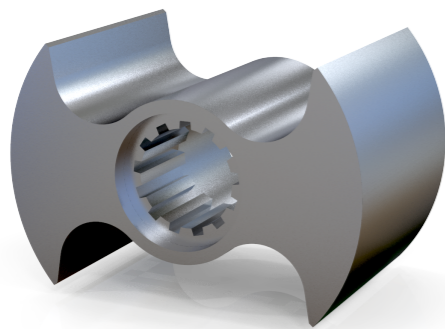
### WORKING PRINCIPLE

- » The FDP rotary lobe pumps basically consist of two lobe rotors which rotate synchronously inside a casing without touching each other. As the rotors rotate, the spaces between the lobes and the casing are successively filled with the product, which is transported to the discharge nozzle with a fixed amount of displacement. The pumped fluid forms a continuous stream thanks to the tolerances between the lobes and the pump casing, thus ensuring an efficient pumping.

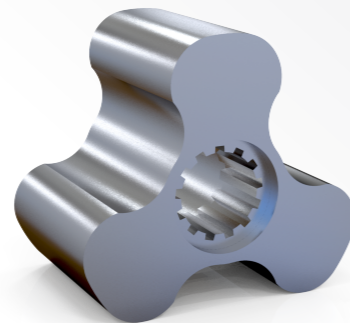
### MATERIALS

- » Parts in contact with the product : AISI 316L
- » Bearing support : GG 25
- » Mechanical seal Gaskets : SiC/C/EPDM

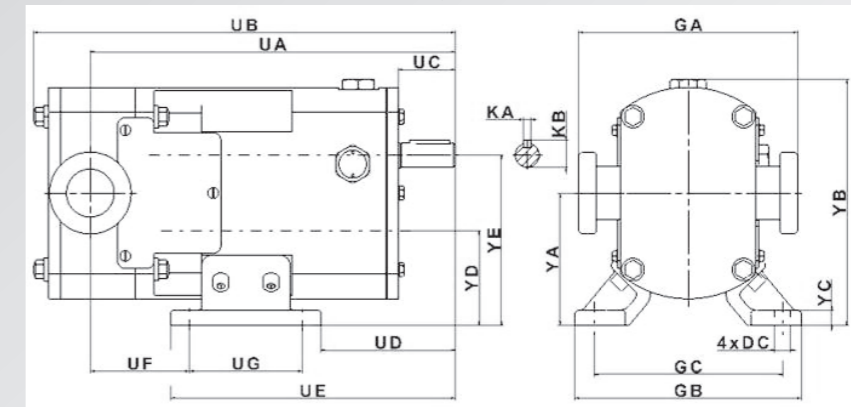
Winglobe



Trilobe



## FDP POSITIVE DISPLACEMENT PUMPS



### DIMENSIONS

TYPE	UA	UB	UC	UD	UE	UF	UG	GA	GB	GC	YA	YB	YC	YD	YE	KA	KB	GAP	DC
FDP+ A 25	277	322				66		166											
FDP+ A 40	277	326	45	106,5	226,5	66	90	174	140	110	123	229	6	75	100	8	28,3	24	12
FDP+ A 50	283	338				72		178											
FDP+ B 40	327	385				59		195											
FDP+ B 50	333	395	55	128	288	65	120	199	163	133	138	262	6	87,5	120	8	32	28	14
FDP+ B 65	341	412				73		209											
FDP+ C 65	430	510				81		244											
FDP+ C 80	432	517	85	175	375	88	150	254	194	154	176	327	8	115	150	10	41	38	16
FDP+ C 100	442	536				98		272											
FDP+ D 100	525	627				108		313											
FDP+ D 125	538	653	103	222	442	121	170	323	213	173	220	405	12	135	200	14	48,5	45	16
FDP+ D 150	550	668				133		343											

MODEL	MAX m3/h	MAX bar	lt/100 rev (Tri-Lobe)	lt/100 rev (Bi-Wing)	Max rpm
FDP + A-25	9,12	10 bar	14	16	900
FDP + A-40	9,69	10 bar	15	17	900
FDP + A-50	12,54	10 bar	19	22	900
FDP+ B-40	18,81	10 bar	28	33	900
FDP + B-50	23,37	10 bar	34	41	900
FDP + B-65	30,21	10 bar	44	53	900
FDP + C-65	36,72	10 bar	70	85	700
FDP + C-80	43,2	10 bar	83	100	700
FDP + C-100	53,13	10 bar	101	123	700
FDP + D-100	79,2	10 bar	201	220	700
FDP + D-125	98,64	10 bar	250	274	700
FDP+ D-150	117,72	10 bar	298	327	700