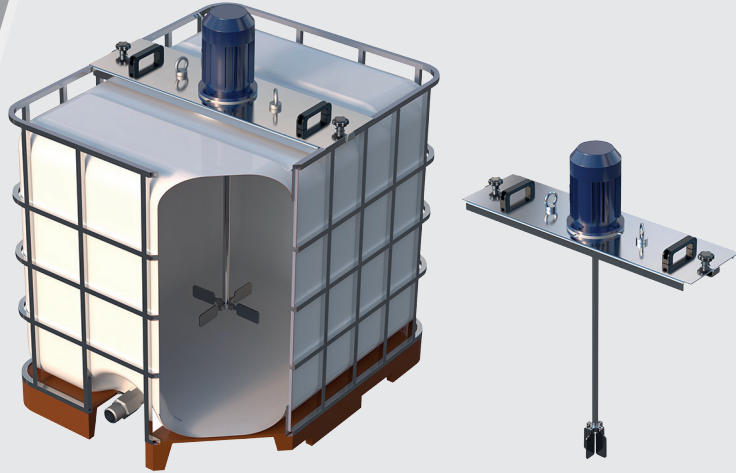


IBC Agitators for great performance



IBC AGITATOR

APPLICATION

- » IBC agitators are vertical agitators with either direct or geared motor. It can be used in mixing, dissolution and maintenance processes.
- » This agitator is designed for almost all industrial process such as chemical, cosmetic and container whose volume are 800 or 1000 L.
- » IBC agitators can be designed according to requirements of process and the feature of the liquid to be mixed. Motor power and type of the propeller can be altered with considering your needs.

OPERATION

- » IBC agitators are installed on the top of the plastic transportable (IBC) containers centrally with a folding propeller. The rotation of the propeller makes the product flow to the bottom and then up the surface along the walls of the IBC tank. At the same time, product is mixed homogeneously without clumps and prohibit the substances from settling down to the bottom.
- » The reliable frame made of stainless steel is placed on the IBC tank and securely fixed with a fixation clamps on the construction of the container.
- » As standart the IBC agitator is supplied with an eye bolt for lifting the agitator using a hoist, and gap on modules are available for lifting the agitator using a forklift truck.

USER BENEFITS

- » Fast and homogenous product mixing.
- » Cost-effective solution for your process.
- » Available version for both low and high viscosity product.
- » Practical assembling thanks to the forklift gap.

MATERIALS

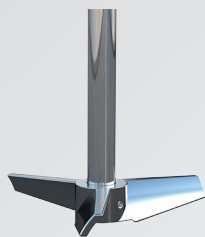
Propeller	AISI 316 SS
Shaft	AISI 316 SS
Base Frame	AISI 304 SS
Hopper	AISI 304 SS
Sealing	NBR
Other materials	Please consult your supplier



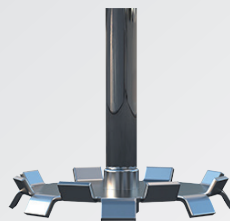
Crossarm Stirrer

OPTIONS

- » Adjustable Speed Control with VFD
- » Hopper
- » Base Frame
- » Motor Shroud
- » Pneumatic Drive
- » ATEX model available



Line Flux



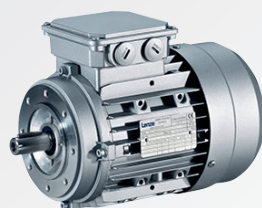
Sawtooth Propeller



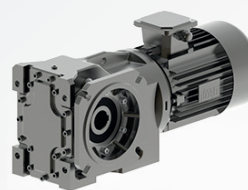
Cup Propeller

MOTOR TYPE

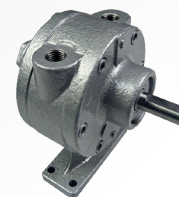
- » Motor type is selected according to the features of the liquid to be mixed. One of the most important issue of selecting motor is viscosity of the liquid. According to viscosity, motor power and speed can be adjusted.



Direct Motor



Gearbox



Pneumatic Motor

IBC AGITATOR

	Viscosity (cps)	Impeller Type	Dia (mm)	Motor	Power (kw)	Speed (rpm)	Base A.304
FA.IBC.15.007.130.FM	600	Line Flux	130	Elk	0,75	1450	Standart
FA.IBC.15.007.130.FF	600	Line Flux	130	Elk	0,75	1450	For Forklift
FA.IBC.15.I.007.130.FM	600	Line Flux	130	Elk	0,75	0-1450 inverter	Standart
FA.IBC.15.I.007.130.FF	600	Line Flux	130	Elk	0,75	0-1450 inverter	For Forklift
FA.IBC.03.015.340.D.M	5000	Crossarm Stirrer	340	Red	1,5	290	Standart
FA.IBC.03.015.340.D.F	5000	Crossarm Stirrer	340	Red	1,5	290	For Forklift
FA.IBC.03.015.600.C.M	10000	Cup Stirrer	600	Red	1,5	290	Standart
FA.IBC.03.015.600.C.F	10000	Cup Stirrer	600	Red	1,5	290	For Forklift
FA.IBC.30.027P.130.FM	800	Line Flux	130	Pneumatic	6 bar 2,7 Kw	300-3000	Standart
FA.IBC.02.007.340.D.M	2000	Crossarm Stirrer	340	Red	0,75	190	Standart
FA.IBC.02.007.340.D.F	2000	Crossarm Stirrer	340	Red	0,75	190	For Forklift
FA.IBC.02.007.600.C.M	3000	Cup Stirrer	600	Red	0,75	190	Standart
FA.IBC.02.007.600.C.F	3000	Cup Stirrer	600	Red	0,75	190	For Forklift
FA.IBC.02.I.007.340.D.M	2000	Crossarm Stirrer	340	Red	0,75	0-190 inverter	Standart
FA.IBC.02.I.007.600.C.M	3000	Crossarm Stirrer	600	Red	0,75	0-190 inverter	Standart
FA.IBC.02.I.007.600.D.F	3000	Cup Stirrer	600	Red	0,75	0-190 inverter	For Forklift
FA.IBC.03.I.015.340.D.F	5000	Crossarm Stirrer	340	Red	1,5	0-290 inverter	For Forklift
FA.IBC.03.I.015.600.C.F	10000	Cup Stirrer	600	Red	1,5	0-290 inverter	For Forklift
FA.IBC.03.I.022.600.D.F	20000	Cup Stirrer	600	Red	2,2	0-270 inverter	For Forklift
FA.IBC.15.011AT.130.FF	200	Line Flux	130	Elk ATEX	1,1	1500	For Forklift
FA.IBC.15.015AT.340.D.F	5000	Crossarm Stirrer	340	Red ATEX	1,5	200	For Forklift