

WITH MECHANICAL SEAL  
AND SEALLESS



# DRUM PUMPS STAINLESS STEEL

IF NO CONTAMINATION AND PRODUCT  
CARRYOVER IS ALLOWED



FOOD



BEVERAGE



PHARMACEUTICAL



COSMETICS

# Drum pumps stainless steel with mechanical seal (MS) and sealless (SL)

## DRUM PUMPS STAINLESS STEEL

IF EASY CLEANING, DURABILITY AND EXPLOSION-PROOF ARE REQUIRED



**PAINTS + COATINGS**



**ACIDS + BASES**



**SOLVENTS**



**SPECIAL APPLICATIONS, PLANT ENGINEERING**



# Our new pumps!

**The quickest way to get to know us is to contact us directly. Save your precious time.**

**Contact us and we will do the rest for you.**

Consulting service, product selection, project planning assistance and quote – fast and all free of charge.

## Advantages

more ...

- practical
- variable
- complete
- hygienic
- solid
- robust
- imaginative
- fit for use
- modular
- individual

## Sealed and sealless pumps types have grown closer to one another

The SD (Simple Disassembly) series is sealed with a mechanical seal (MS). In the SL series (sealless) there is an inner tube in the pump tube. The leakage unit depressurises the inner tube. The drive shaft is running within the inner tube. With no pressure difference between the inner tube and the outside ambient air no liquid can leave the pump, where the drive shaft comes out from the pump head. The pump is therefore always without leakage at the pump head.

Tel. +49 93 42 / 9 35 16-0  
[info@gruen-pumpen.de](mailto:info@gruen-pumpen.de)



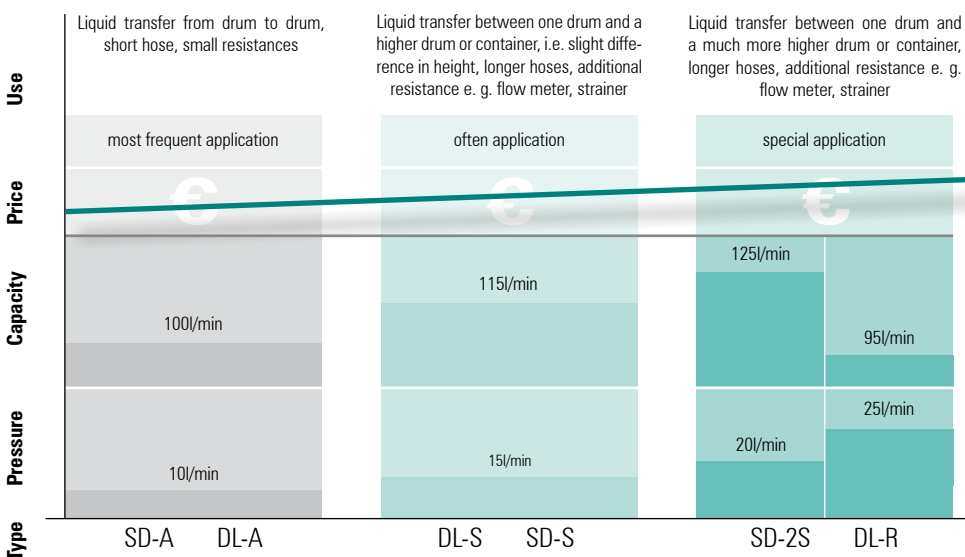
**In this booklet you will learn a lot about grün-drum pumps. We are sure you will experience proof of our commitments and product statements when using our equipment.**

**Online you can learn interesting facts about 'grün-business-philosophy' in a three minute audio slideshow.**

**Worth seeing.**







[www.gruen-pumpen.de](http://www.gruen-pumpen.de)

## The right pump for your application



# drum pumps stainless steel with features for the top position

## DRUM PUMPS STAINLESS STEEL

	SD-SS-	A	S	DL-SS-
<b>important for your application</b>				
large capacity		X		
high pressure			X	
viscosity up to 1.500 mPas (pd500)			X	
hydraulic tuning			X	
many different liquids				X
mixing function				
simple disassembly (SD)	X			
easy to clean	X			X
explosion proof				
continous work with induction motor			X	
<b>tube length</b>	container size	ord.-no.		
700 mm	hobcock 30l	631-0001	631-0006	
1000 mm	drum up to 220 l	631-0002	631-0007	
1200 mm	IBC up to 1000 l	631-0003	631-0008	
> 1200 mm	special container	on demand	on demand	
<b>electrical motors without explosion proof</b>				
<b>p310</b> optimised in price	preferred combination	X		
<b>p400</b> the ideal drive	improved hydr. performance	X	X	
<b>pd500</b> silent worker	smooth product treatment		X	
<b>electrical motors with explosion proof</b>				
<b>EX700</b> for hazardous locations	safety by power	X	X	
<b>pd500</b> Ex	smooth product treatment		X	
<b>compressed air motor for all applications</b>				
<b>d600</b> for hazardous locations	the power drive	X	X	



A R S			MP-DL-SS- A R S			Mag-SS- A R			
X				X				X	
	X	X			X	X			X
		X				X			
	X	X			X				
			X						
			X						
			X						
			<b>AtEx</b>						
		X				X			
							hermetically sealed		
							no		

	ord.-no.			ord.-no.			ord.-no.	
691-0001	696-0001	691-0006		691-0011	696-0011	691-0016	630-0004	635-0004
691-0002	696-0002	691-0007		691-0012	696-0012	691-0017	630-0005	635-0005
691-0003	696-0003	691-0008		691-0013	696-0013	691-0018	630-0006	635-0006
on demand	on demand	on demand		on demand	on demand	on demand	on demand	on demand

X				X			X	X
X	X	X		X	X	X	X	X
		X				X		
X	X	X		X	X	X		
		X				X		
X	X	X		X	X	X		

# Drive motors, select the best drive for every

## p310 optimised in price

## p400 the ideal drive



### properties

short and occasional use,  
it likes light and thin liquids,  
internal cooling

big resources in power  
and durability,  
works quickly and saves time,  
internal cooling

### options

low voltage release (LVR)  
recommended according to  
EU-directives, speed redu-  
cer (SR) varies pressure and  
capacity

low voltage release (LVR)  
recommended according to  
EU-directives, speed reducer (SR)  
varies pressure and capacity,  
IP54 with TEFC (MA)

### data

power (W)

520

850

voltage (V)

230 | 120

230 | 120

protection

IP24

IP24 / IP54 | IP24

LVR\*

optional

optional

SR\*\*

optional

optional

weight (kg)

3,5

4

max. spec. gravity (kg/l)

A | 1,4

Förderelement s.S. 4/5

A / R / S | 2 / 1,8 / 1,5

max. viscosity (mPas)

250

A / R / S | 800 / 600 / 500

with LVR\*

500-0016 | 500-0028

500-0023 | 500-0025

with SR\*\* and LVR

500-0074 | 500-0060

500-0069 | 500-0066

without LVR

500-0017 | 500-0029

500-0024 | 500-0026

without LVR with SR

500-0054 | 500-0057

500-0056 | 500-0063

magnetic clutch , LVR

500-0030 | 500-0032

500-0034 | 500-0036

magnetic clutch , LVR, SR

500-0061 | 500-0062

500-0067 | 500-0068

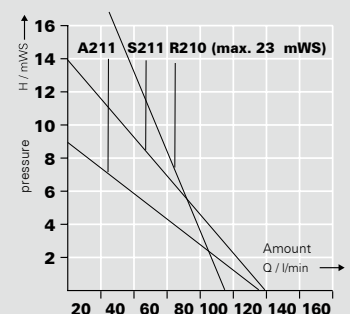
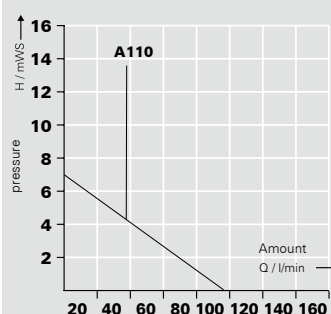
TEFC (MA) IP54

500-0072

### characteristics

\* low voltage release  
\*\* speed reducer

recommended types

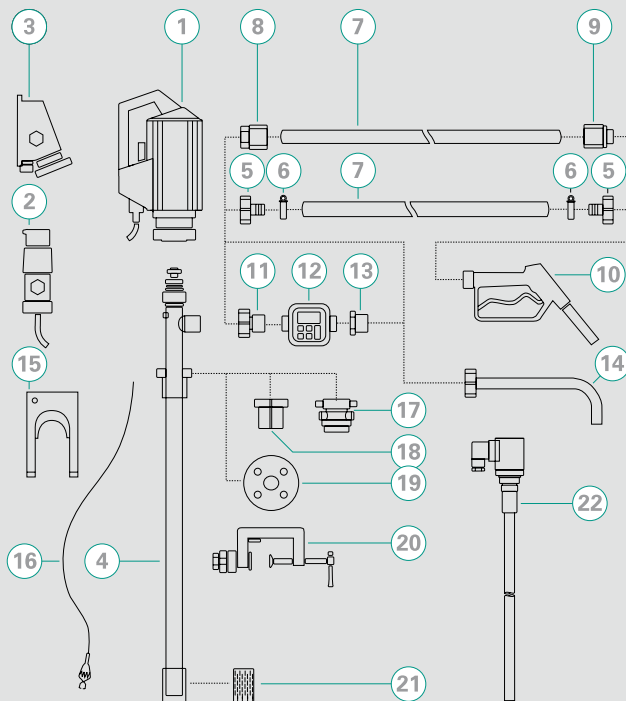




Other pumps in separate catalogue.



# ACCESSORIES



- 1 Drive motor
- 2 Explosion-proof plug
- 3 Explosion-proof socket
- 4 Pump tube
- 5 Hose connector
- 6 Hose clamps
- 7 Hose
- 8 Hose fittings
- 9 Hose fittings
- 10 Nozzle
- 11 Flow meter connection
- 12 Flow meter
- 13 Reducing piece
- 14 Discharge spout
- 15 Wall bracket
- 16 Equipotential bonding cable
- 17 Emission proof drum adapter
- 18 Drum adapter
- 19 Installation flange
- 20 Clamping device
- 21 Foot strainer
- 22 Level switch

Distributor:

**grün-pumpen gmbh**  
**Otto-Schott Str. 19**  
**D-97877 Wertheim**  
**Telefon +49 93 42 9 35 16-0**  
**Telefax +49 93 42 9 35 16-29**  
**info@gruen-pumpen.de**  
**www.gruen-pumpen.de**

**Handelsregister:**  
**Reg. Gericht Mannheim**  
**HRB 570326**  
**Sitz der Gesellschaft:**  
**Wertheim**  
**Geschäftsführer:**  
**Ralph Dostmann, Dr. Thomas Sigel**  
**USt.IdNr. DE 160765854**

**g**<sup>®</sup>  
**grün-pumpen**  
 take out, what's in.