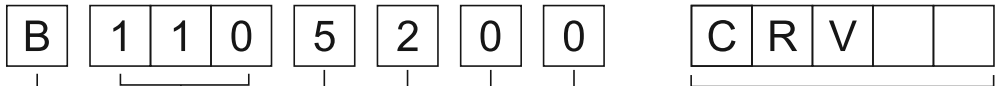




B SERIE LOBE PUMP CODE

EXAMPLE:



FINISHED PRODUCT
CATEGORY
LOBE PUMP SERIE

B

PUMP
SIZE

100
105
110
115
215
220
325
330
430
440
470
490
550
660
680

SEAL
TYPE

0	Type UM (lip seal)
1	Teflon packing rings
2	Teflon packing rings + hydraulic barrier
3	SS/Carbon balanced mech. seal
4	Tung. Carbide/Carbon balanced mech. seal
5	Tung. Carbide/Tung. Carbide balanced mech. seal
6	Ceramic/Carbon balanced mech. seal
7	Ceramic/Rulon balanced mech. seal
8	Silicon Carbide/Sil. Carbide balanced mech. seal
9	Special seals

SUCTION/DISCHARGE
PORT CONNECTIONS

0	Gas - BSP ports
1	Flanged ports
2	DIN 11851 F ports
3	SMS ports
4	RJT (BS) ports
5	IDF ports
6	Clamp ports
7	Female gas thread
8	Oenological
9	Special

ROTOR
TYPE

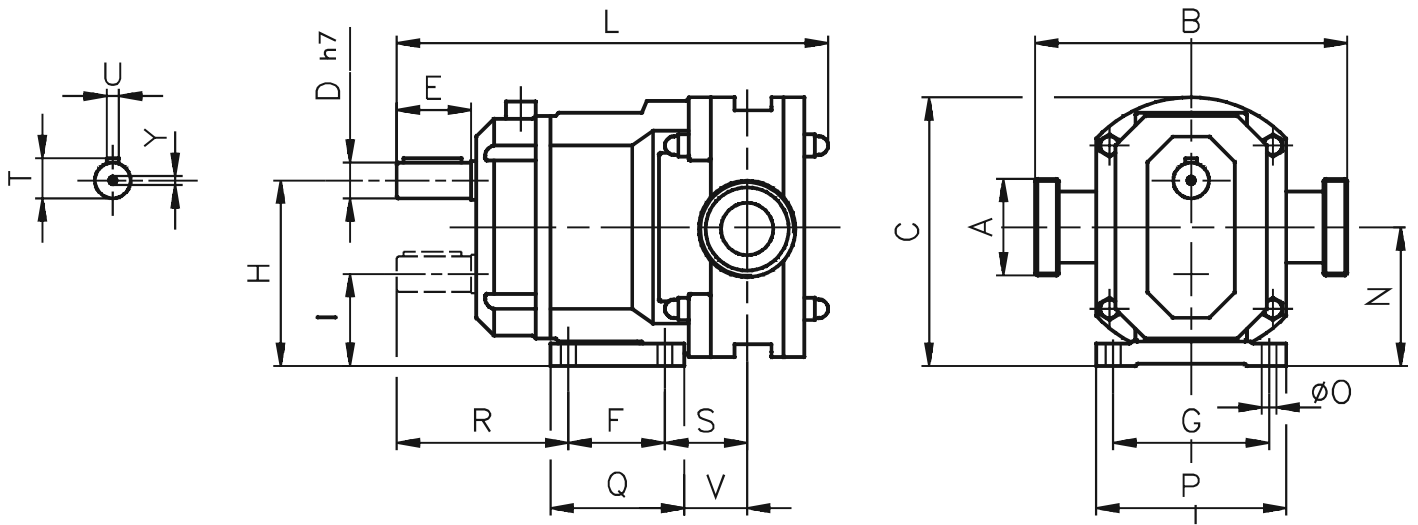
0	Standard stainless steel tri-lobe ST
1	Stainless steel tri-lobe increased clearance SM
2	Standard stainless steel bi-lobe ST
3	Stainless steel bi-lobe increased clearance SM
4	Rubber-coated stainless steel/NBR tri-lobe
5	Acteon dual wing rotary piston
6	Rubber-coated stainless steel/NBR bi-lobe
7	Acteon tri-lobe/gear rotor
8	Stainless steel gear rotors
9	Special rotors

TYPE OF END
COVER

0	Standard end cover
1	End cover with relief valve
2	End cover with heating jacket

SPECIAL
VERSIONS

A	Aseptic pump	M	Polymer/Monel pump
B	External by-pass	P	Teflon trim
C	Single flushed mech. seal	Q	Double flushed mech. seal
D	Duplex shafts	R	Rotor case with heating jacket
F	Polymer/Hastelloy pump	S	S1 polymer lip seal
G	Inner polishing surface < 0,6 μ	T	Hydraulic flange pump
H	High-pressure pump	U	EPDM trim
I	Monel 400 pump	V	Viton trim
J	Titanium pump	W	Polymer/Titanium pump
K	Surface hardening	Y	Hastelloy pump
L	Enlarged inlet port	Z	Hastelloy/Titanium pump



ITEM	TYPE OF PUMP WITH GAS-BSP PORTS														
	B100	B105	B110	B115	B215	B220	B325	B330	B430	B440	B470	B490	B550	B660	B680
A	1"	1"1/2	1"1/2	1"1/2	1"1/2	2"	2"1/2	3"	3"	4"	4"	4"			
B	160	170	170	170	208	208	236	236	335	335	385	385			
C	115.5	181	181	181	235.5	235.5	270	270	367.5	367.5	442.5	442.5	515	690	690
D	18	24	24	24	28	28	35	35	48	48	55	55	55	80	80
E	45	50	50	50	55	55	65	65	85	85	110	110	110	140	140
F	65	65	65	65	90	90	120	120	140	140	150	150	200	300	300
G	105	105	105	105	125	125	140	140	190	190	250	250	300	400	400
H	80	125	125	125	165	165	190	190	255	255	300	300	350	480	480
I		62	62	62	90	90	100	100	130	130	160	160	178	250	250
L	265	290.5	290.5	302.5	365.5	380.5	459	474	543.5	543.5	654	654	637	807	867
N	58.6	93.5	93.5	93.5	127.5	127.5	145	145	192.5	192.5	230	230	264	365	365
O	9	10	10	10	12	12	14	14	18	18	22	22	19	26	26
P	125	128	128	128	152	152	174	174	235	235	300	300	350	460	460
Q	85	90	90	90	130	130	170	170	195	195	255	255	250	360	360
R	108	115.5	115.5	115.5	136.5	136.5	167	167	206.5	206.5	255	255	227	283	283
S	52	55.5	55.5	67	78	87	94	103	109	116.5	143.5	173	106.5	122	152
T	20.5	27	27	27	31	31	38.5	38.5	52	52	60	60	60	85	88
U	6	8	8	8	8	8	10	10	14	14	16	16	16	22	22
V	42	42.5	42.5	54	52	61	62	71	76.5	84	63.5	93	81.5	92	122
Y		M6	M6	M6	M8	M8	M10	M10	M12	M12	M12	M12	M12	M16	M16
Kg.	10.5	20	20	21	41	43	63	65	130	135	225	233	270	610	670
Pumps with UNI 2278 PN 16 flanged ports															
A	DN25	DN40	DN40	DN40	DN40	DN50	DN65	DN80	DN80	DN100	DN100	DN100	DN125	DN150	DN200
B	165	186	186	186	224	228	256	256	355	355	405	405	566	680	670
Pumps with DIN 11851 ports															
A	DN25	DN40	DN40	DN40	DN40	DN50	DN65	DN80	DN80	DN100	DN100	DN100	DN125		
B	160	210	210	210	248	228	296	296	395	395	445	445	632		
Pumps with SMS ports															
A	DN25	DN38	DN38	DN38	DN38	DN51	DN63	DN76	DN76	DN101	DN101	DN101			
B	143	210	210	210	248	248	296	296	395	395	445	445			
Pumps with IDF - ISS ports															
A	DN25	DN38	DN38	DN38	DN38	DN51	DN63	DN76	DN76	DN101	DN101	DN101			
B	146	210	210	210	248	248	296	276	375	378	428	428			
Pumps with RJT ports															
A	DN25	DN38	DN38	DN38	DN38	DN51	DN63	DN76	DN76	DN101	DN101	DN101			
B	157	210	210	210	248	290	286	385	389	439	439				
Pumps with TRI-CLAMP ports															
A	DN 1"	DN 1"1/2	DN 1"1/2	DN 1"1/2	DN 1"1/2	DN 2"	DN 2"1/2	DN 3"	DN 3"	DN 4"	DN 4"	DN 4"			
B	160	210	210	210	248	248	293	290	389	392	442	442			