



SD

SUBMERSIBLE WASTEWATER PUMPS EXCLUSIVELY MADE BY SAER

Coming from SAER unmatched knowledge in the borehole pumps and submersible motors field, the brand new SD series, submersible wastewater pump is now reality. Designed for managing waste, raw and sewage water.

SAER[®]
ELETTROPOMPE

RANGE

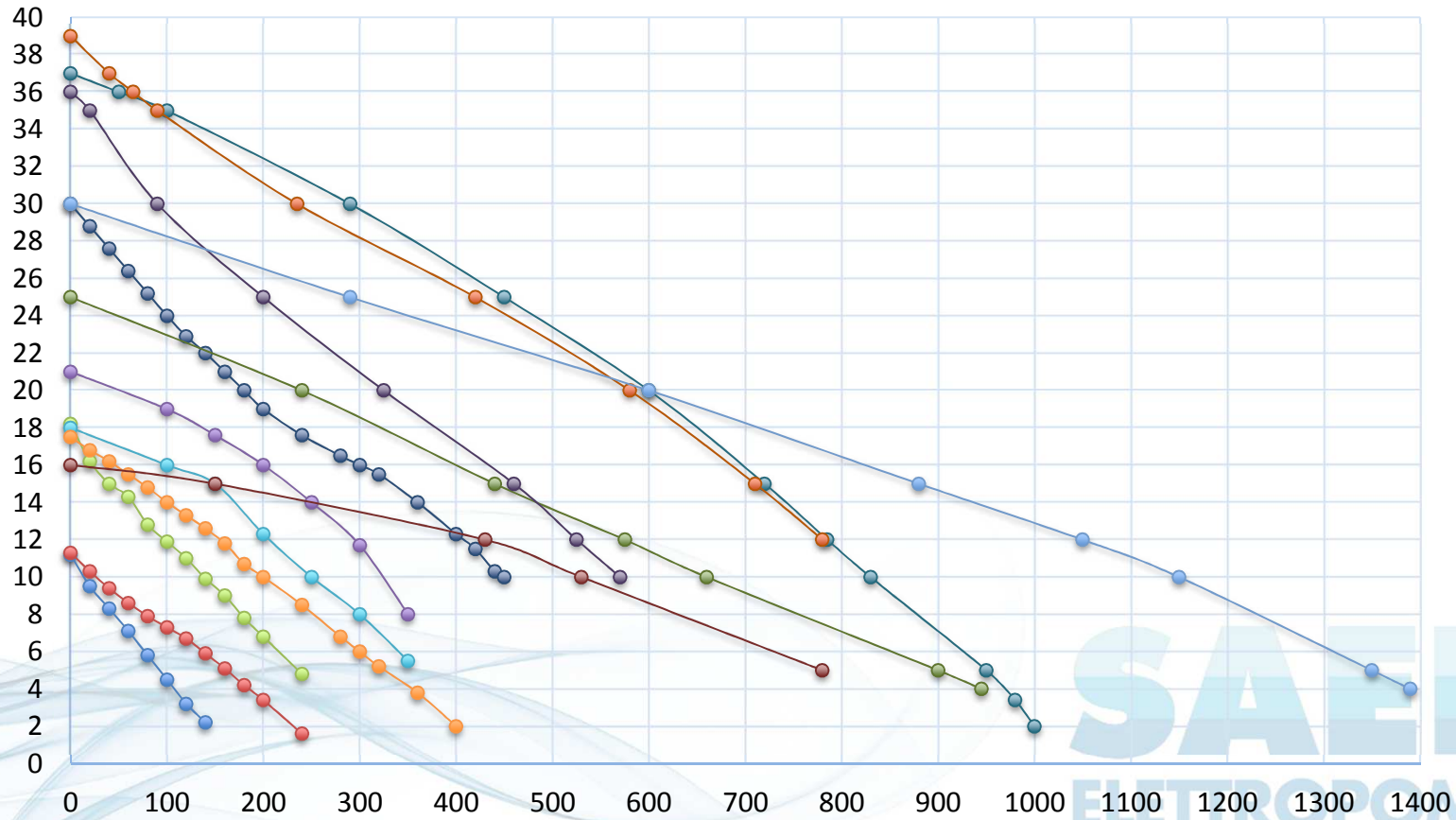
- **POWER:** from 2,2 kW up to 55 kW, 50 and 60 Hz
- **NR. POLES:** 2, 4 or 6
- **FLOW:** up to 1400 m³/h
- **HEAD:** up to 39 m
- **MODELS:**
 - SD 80-160
 - SD 100-160
 - SD 100-200
 - SD 150-250 A
 - SD 150-250 B
 - SD 150-225
 - SD 150-315
 - SD 200-225
 - SD 200-250
 - SD 200-280
 - SD 200-315
 - SD 200-355
 - SD 250-315



SAER[®]
ELETTROPOMPE

RANGE

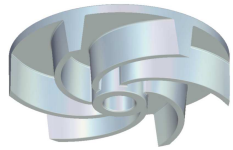
50Hz diagram



- SD 80-160
- SD 100-160
- SD 100-200
- SD 150-250 A
- SD 150-250 B
- SD 150-225
- SD 150-315
- SD 200-225
- SD 200-250
- SD 200-280
- SD 200-315
- SD 200-355
- SD 250-315

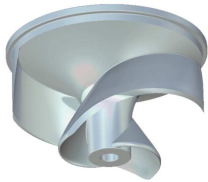


AVAILABLE VERSIONS



- **Type V**

Anti clogging vortex impellers (up to size DN100)



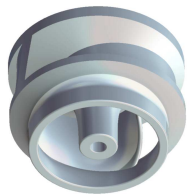
- **Type P**

Multi-channel helical open impeller to pump charged liquids, also in presence of fibrous substances (up to size DN150)



- **Type O**

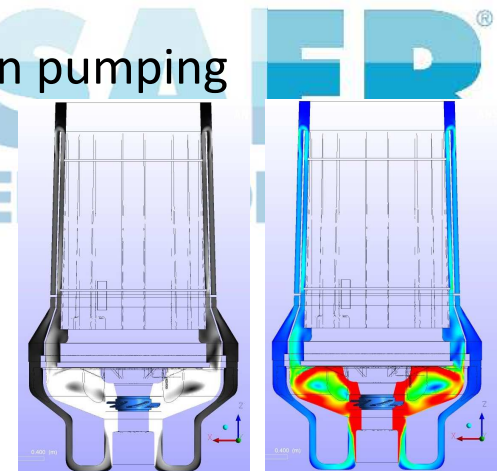
Multi-channel open impeller with helical channel wear disc. Minimized risk of clogging



- **Type C**

Closed peripheral impeller for top efficiency in pumping charged liquids with low fibrous substances

- **Special Cooled version** for dry chamber application (P>13 kW)



ADVANTAGES



- **WATER PROOF**

Cable exit technology tested against water penetration up to 20 bars.

- **SMART**

Terminal block studied for easy maintenance.

- **CORROSION RESISTANT**

Two-component epoxy paint against corrosion according to EN 12944-6 grade C3-M.

- **RELIABLE**

Heavy duty resistant materials for all components.

SAER[®]
ELECTROPOMPE

ADVANTAGES



- **ENERGY SAVING**

SAER premium IE3 motors from 2,2 kW up to 55 kW, 2, 4 or 6 poles.

- **RESISTANT**

Long life bearings for average life by 100.000 hours, continuous running (MTBF).

- **SAFE**

Exclusive double mechanical seal in oil chamber protection for trouble-free functioning. Protection probes for humidity, temperature, overheating etc.

- **VERSATILE**

Pump available in cast iron, AISI316 and Duplex. Several types of impellers available. For submerged or dry installation.

SAER[®]
ELETTROPOMPE

**The SD Series will be available
starting from spring 2019**



SAER[®]
ELETTROPOMPE