



Manufacturing Program

THREE ROTOR PUMPS

February 2011, rev.2



OUR MISSION

To supply reliable and lasting Products, even for the hardest applications, though synergic collaboration and use of the latest technologies.

THE COMPANY

SEIM, after 30 years of production, have achieved a leading position in the screw pump market world wide. Our high volume production of market leading products (more than one million screw pumps installed) including heat exchangers and relief valves (over 50.000 each) has placed us in a dominant position in many different fields of application (to name but a few: Power Generation, Petrochemical, Oil and Gas, Paper and Steel industry, Automotive, Marine).

Our wide range of Products grant capability to satisfy demand in all fields of application, whose can be summarized in three big groups:

- LUBRICATION
- DRIVING
- COOLING AND FILTERING

SEIM Products are fully developed in our Company, thank to know-how achieved during more than thirty years experience in manufacturing screw pumps. R&D Department follow criteria like "answer to demands by the market", developing new Products to satisfy world-wide Customer's requests (then including customization) thanks to high tech apparatus at its own disposal and synergic collaboration both with customers and distributors, implementing performances

for existing Products introducing latest news in terms of materials, machining process, analysis and control systems (both during parts manufacturing and on "ready to delivery" products).

All Products manufactured by SEIM are 100% tested and data concerning pumps are stored in our files. Thanks to Products identification achievable by model code and serial number is possible:

- find out product performance, also "after sale"
- to issue certificates for pump performances (both SEIM standard test conditions or customer's requested conditions).

SEIM Quality System, recognised since November 1995 by ISO 9000 certification (according to ISO 9001 and extended to UNI EN ISO 9001:2000 in October 2003), rules all activities in the Company, with the aim to fully satisfy customer's expectation in terms of Products Quality, reliability in delivery and stock availability for finished Products.

SEIM Sales Network is extended throughout all Continents, and it is in continuous development: it is capable to grant qualified technical support in selecting our Products and to handle directly a wide portfolio of international leading Customers.



SEIM PRODUCTS RANGE

SEIM Manufacturing Program features three main categories, each one including different Products.

INDUSTRIAL DIVISION

Three Screw Pumps

- Flow rates up to 5.400 lpm (ca. 1500 USGPM), larger flow rates are available upon request.
- Pressure up to 200 bar, higher pressure versions are available upon request, (ca. 2800 psi).
- Suitable for lube oils (mineral and synthetic – even at high viscosity > 100.000 cSt, HFC fluids, water based emulsions, cutting oils, aeronautic and dielectrical fluids, LFO and HFO, silicon fluids).
- Execution conform to API 676 (latest edition).
- ATEX approval, survey by naval inspection bodies.
- Built in relief valve, optional.

Flow meters

High accuracy in a wide range of applications (up to 5000 lpm, std 900 lpm), (ca. 1350 USGPM).

High linearity throughout working range.

Lowest pressure drops, even at high viscosity (5000 cSt), (ca. 240 USGPM).

Measure not affected by pressure, viscosity and temperature variation.

High pressure version available (higher than 350 bar / ca. 4000 psi).

Specific electronic available, optional.

Safety and relief valves

Wide flow and pressure ranges, in line and built-on pump versions available.

- Flow ranges up to 1500 lpm, (ca. 400 psi - 1700 psi).
- Pressure ranges up to 120 bar.
- Manual or factory set adjustment versions.
- Pressure controlled version with pneumatically driven.



ISO9001 2000



ATEX Ex II 2GT3



ABS - marine approval

Accessories

SEIM Manufacturing Product Range can be completed by a wide range of accessories, like but not limited to:

- SAE counterflanges.
- Bell housings and Couplings, also with spacer. Available ATEX approved models.
- Electrical motors, AC or DC, ATEX custom execution, European or North American approvals.

SEIM capability extends to:

- Close couplings pre assembled systems (motor pump units).
- Skid mounted systems (horizontal mounting pumps or tank lid for vertical mounting, or tripod).
- Off-line filtration systems (filtration trolleys and complete stand alone systems, also for machine tools).

COOLERS DIVISION

SEIM manufacture following coolers:

- Air - oil.
- Water - oil.
- Chillers.

Standard range up to 14.000 kCal/h., (55.300 BTU/h).

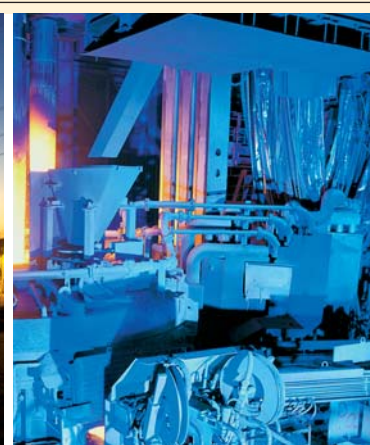
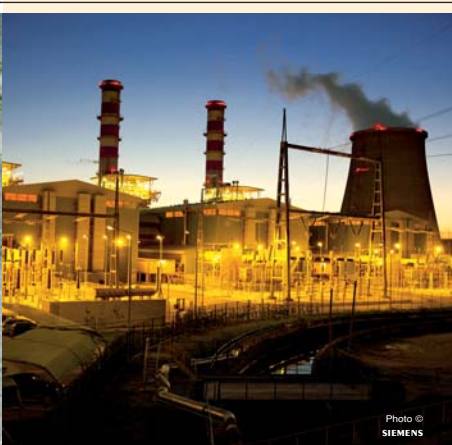
All power supply ratings are available.

UL/CSA approved versions.

Electronic thermo regulator or manual temperature switch.

Main characteristics:

- High self priming capability, thanks to SEIM screw pumps.



- Lowest noise level, thanks to specific fan design for 50 or 60 Hz and use of the screw pump.
- Low cost, thanks to several accessories available, supplied preinstalled or D.I.Y. depending by model Series.

LIFT DIVISION

Complete three screw pumps range suitable for all applications in Elevators Market.

- Flow rates from 3 to 850 lpm, (ca. 227 USGPM).
- Submersible screw pumps for hydraulic power packs, suitable to match submersible or std IEC electrical motor.
- "DRY" type application, with external screw pump installation (not submerged).
- European and American versions.

SEIM supplies in Elevators Market can be integrated by supplying electrical motors and by our wide range of coolers (apply to SEIM relevant Division).

AFTER SALES SERVICE

SEIM Products are lasting and reliable, protected by adequate warranty. Whether maintenance will be necessary, SEIM grant support both from our headquarter in Cusago and on site through qualified personnel.

SEIM manufacturing range follows our philosophy, aiming to consolidate relationship with our Customers: constant product improvement through latest technology "pump" our actions.



MANUFACTURING PROGRAM



Screw Pumps



THREE ROTOR PUMPS - Series

PA PCX PCXV PDA PDK PHS

Flow rate LPM (USGPM)	850 (224)	5000 (1350)	2800 (740)	160 (42)	80-460 (21-119)	up to 170 (45)
Max operating pressure bar (PSI)	50 (725)	30 (450)	30 (450)	10 (145)	16 (232)	16 (232)
Typical viscosity (cSt) code Y (where applicable)	Note1+ 10 - 400	10 - 400 Y	10 - 400 Y	20 - 400 Y	20 - 400	10 - 400 1,2 - 5.000 optional
Max Operating Temperature °C (°F) - Note 1	120 (248)	120 (248)	120 (248)	100 (212)	100 (212)	120 (248) 150 (302) optional

Typical applications

Lube systems	•	•	•	•	•	•
API 676 system compliant (contact SEIM)		•	•			
Cooling and Refrigeration systems						
Filtration systems	•	•	•	•	•	•
Cooling / heating systems	•			•	•	•
Driving	•	•	•			
Kidney loop systems	•	•	•	•	•	•
Fuel oils						•

Mounting arrangement	V (note 2)	H, V, P	V (+ S solo / only)	H, V	H, V	H, V
----------------------	------------	---------	---------------------	------	------	------

Std materials of construction

Body	T	C / E	C / E	T	T	G (GGG-40)
Screw set	C	C / I	C / I	C	C	I

Seal type	No	M	M	M	M	M
-----------	----	---	---	---	---	---

IN/OUT ports connection type	B (note 3)	A	A	B	B	custom
------------------------------	-------------	---	---	---	---	--------

Integrated relief valve(Y=yes)	-	Opt.	-	Y	Y	Y
--------------------------------	---	------	---	---	---	---

Codes explanation

High Viscosity available (up to 100.000 cSt)	Y
ANSI flanged ports	A
BSP threaded ports	B
Carbon steel	C
DIN flanged ports	D
Stainless Steel	E
SAE flange ports	F
Cast iron	G
Horizontal mounting	H
Nitrided steel	I
Magnetic driving coupling	L
Mechanical Seal	M
Other Sealing method	O
Direct coupling, PTO	P
Submerged Installation, P port above tank lid	R
Submerged Installation	S
Aluminum	T
Water based coolant (min4% in oil).	U
Vertical mounting	V
SEIM' custom material - ask for details	X

Note

Foreword: Apply to relevant Series catalogue or technical literature/leaflet about details, overall dimensions and pump performances. For different operating conditions (pressure, temperature, viscosity, driving speed) apply to SEIM.

- Contact SEIM for different value.
- submerged in oil mounting only
- Suction strainer version available.

MANUFACTURING PROGRAM



POF6 PQJ PWO PXF PZ THREE ROTOR PUMPS - Series

600 (159)	38 (10)	600 (159)	5400 (1450)	5400 (1450)	Flow rate LPM (USGPM)
120 (1740)	10 (145)	100 (1450)	30 (450)	16 (232)	Max operating pressure bar (PSI)
10 - 400	10 - 400	1-400	10 - 400 Y	10 - 400 Y	Typical viscosity (cSt) Note1+ code Y (where applicable)
120 (248)	100 (212)	100 (212)	120 (248)	120 (248)	Max Operating Temperature °C (°F) - Note 1

Typical applications

•	•		•	•	Lube systems
					API 676 system compliant (contact SEIM)
		• (note U)			Cooling and Refrigeration systems
	•		•	•	Filtration systems
	•		•	•	Cooling / heating systems
•	•		•	•	Driving
	•		•	•	Kidney loop systems
•		•	•	•	Fuel oils

H, V, R	H, V	H, V, R	H, V, P	H, V, P	Mounting arrangement
---------	------	---------	---------	---------	----------------------

Std materials of construction

G+T	T	G+X	G, C	G	Body
I	G/C	I	C	I	Screw set

M	O	M	M, L	M, L	Seal type
---	---	---	------	------	-----------

F	B	F	F	D (opt. A)	IN/OUT ports connection type
---	---	---	---	------------	------------------------------

-	Y	-	Y	Y	Integrated relief valve(Y=yes)
---	---	---	---	---	--------------------------------

Y	High Viscosity available (up to 100.000 cSt)
A	ANSI flanged ports
B	BSP threaded ports
C	Carbon steel
D	DIN flanged ports
E	Stainless Steel
F	SAE flange ports
G	Cast iron
H	Horizontal mounting
I	Nitrided steel
L	Magnetic driving coupling
M	Mechanical Seal
O	Other Sealing method
P	Direct coupling, PTO
R	Submerged Installation, P port above tank lid
S	Submerged Installation
T	Aluminum
U	Water based coolant (min4% in oil).
V	Vertical mounting
X	SEIM* custom material - ask for details

Foreword: Apply to relevant Series catalogue or technical literature/leaflet about details, overall dimensions and pump performances. For different operating conditions (pressure, temperature, viscosity, driving speed) apply to SEIM.

- Contact SEIM for different value.
- submerged in oil mounting only
- Suction strainer version available.

Screw pumps – PA series with strainer



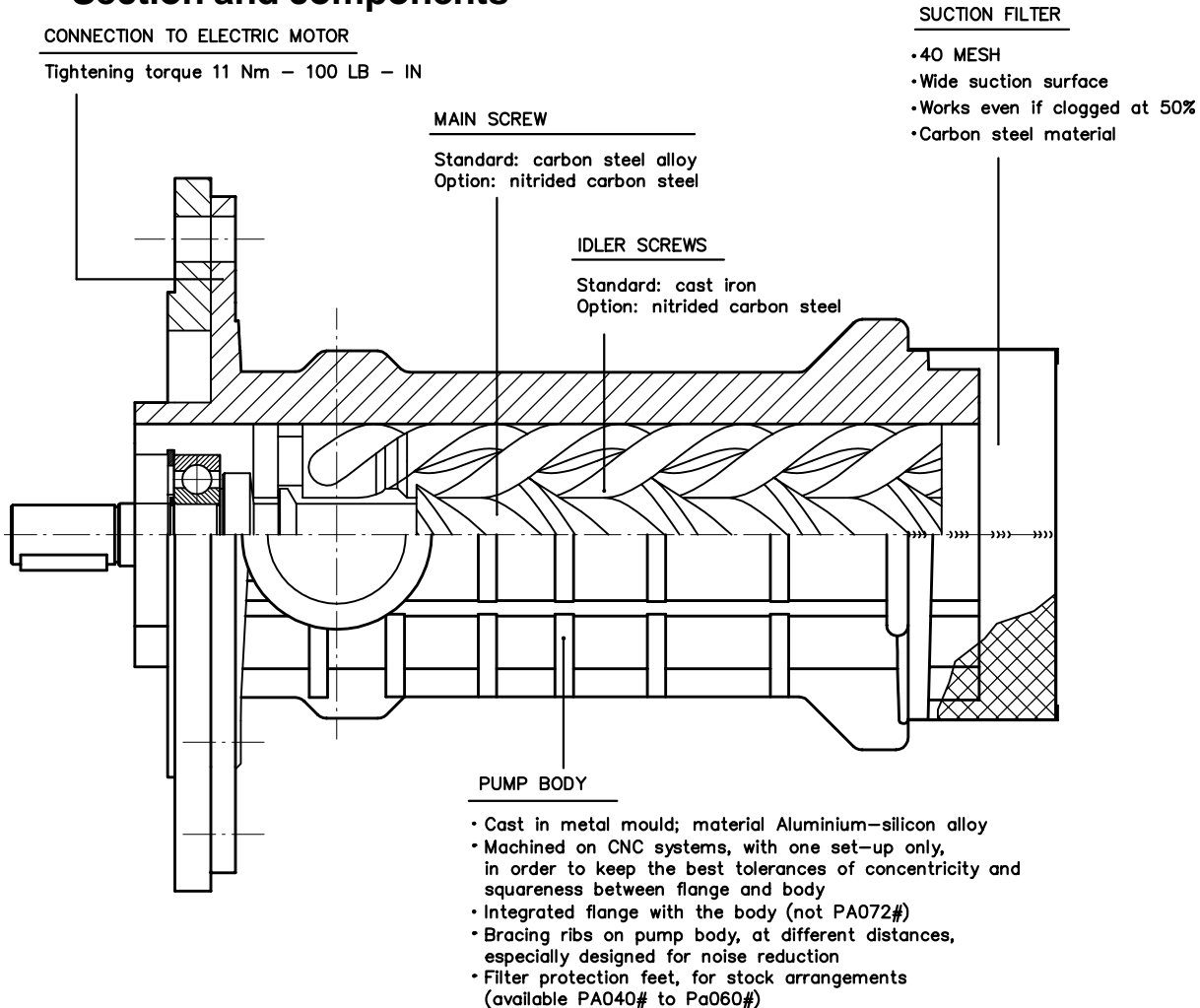
For hydraulic oils, lubricating oils
 Admissible delivery pressure (continuous) = 50 bar at 2900 rpm
 ISO 3019/2 motor connection

Main field of application:

Pump submersible into tank for lubrication systems, auxiliary filtration system, cooling system



Section and components



Functional characteristics standard version

Delivery flow	10 to 850 l/min (2,6 to 224 USGPM)
Admissible delivery pressure*	up to 50 bar (725,2 psi) continuous, 75 bar (1088 psi) peak at 2900 rpm
Admissible suction pressure	submerged in oil
Kinematics viscosity	10 to 400 cSt For different values contact SEIM
Admissible temperature	0 to 100 °C (32 to 212 °F) For different values contact SEIM
Driving speed	750 to 3600 rpm
Average noise level	58 ÷ 68 dB(A) at 2900 rpm according to pump dimension
Racommended filtration	60 micron max, suction side (not abrasive contaminant) ISO4406 19 / 16 - NAS 10
Direction of rotation	clockwise, as seen from the driving side

* Reduced pressure limits apply due to fluid viscosity and driving speed
 Consult the performance charts for the individual pump size

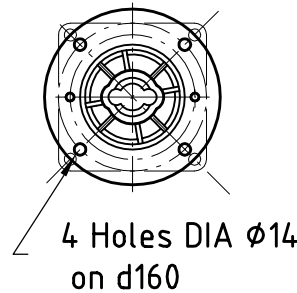
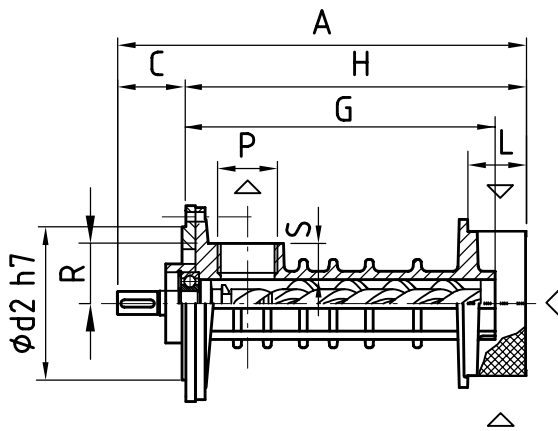
For different functional characteristics, please contact our sales department

Screw pumps – PA series with strainer

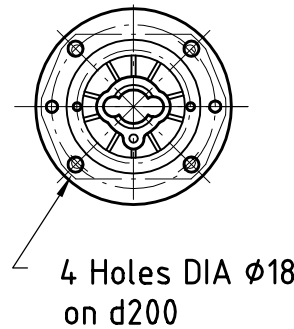
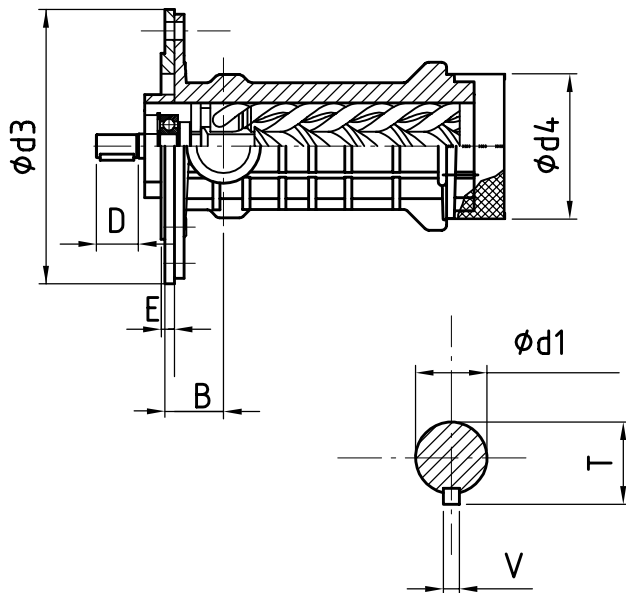
For hydraulic oils, lubricating oils

Admissible delivery pressure (continuous) = 50 bar at 2900 rpm

ISO 3019/2 motor connection



PA025#
PA029#
PA032#
PA040#
PA045#



PA055#
PA060#
PA072#

ZA - STE - PA 0M - GB 05-02 - 1

Dimensional chart (mm)

SIZE	A	B	C	D	E	G	H	L	P GAS	R	S	T	V	d1	d2	d3	d4
PA025#6.0M	299	68	42	35	22	229	256	30	1"	44	24	21,5	6	19	125	188	83
PA029#6.0M	299	68	42	35	22	229	256	30	1"	44	24	21,5	6	19			83
PA032#4.0M	299	68	42	35	22	229	256	30	1"	44	24	21,5	6	19			83
PA040#4.0M	342	68	42	35	22	272	299	50	1"	50	24	21,5	6	19			123
PA045#4.0M	363	68	48	40	22	297	314	65	1½"	50	20	27	8	24	123		
PA055#4.0M	425	86	63	55	22	337	358	50	1½"	60	28	35	10	32	160	234	162
PA060#4.0M	464	86	63	57	22	390	401	50	2"	60	28	35	10	32			162
PA072#4.0M	563	112	63	63	22	452	500	130	2"	72	30	41	10	38			190

SEIM srl
Via A. Volta 17
20090 Cusago (MI) ITALY
Tel. (+39) 02.90.39.21.1
Fax (+39) 02.90.39.21.41
e-mail: seim@seim.it

www.seim.it

SEIM reserves the right to introduce dimensional changes or variation to the products of this technical data

Screw pumps - PA series - axial inlet flange

For hydraulic oils, lubricating oils

Admissible delivery pressure (continuous) = 30 bar at 2900 rpm

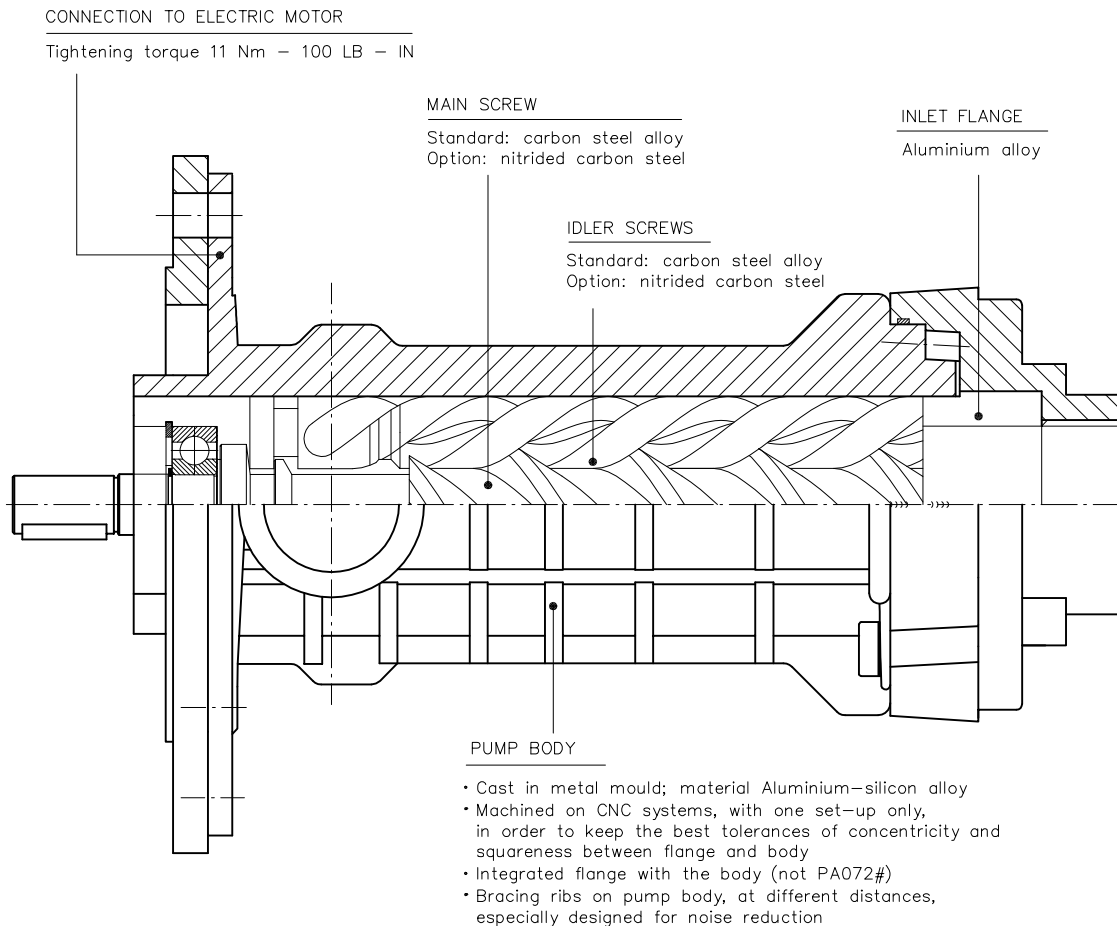
ISO 3019/2 motor connection



Main field of application:

Submersible pump for lubricating system, auxiliary filtration system
cooling system

Section and components



Functional characteristics standard version

Delivery flow	10 to 850 l/min (2,6 to 224 USGPM)
Admissible delivery pressure*	up to 30 bar (435 psi) continuous, 45 bar (650 psi) peak at 2900 rpm
Admissible suction pressure	-0,4 to 2 bar (-5,8 to 29 psi)
Kinematics viscosity	10 to 400 cSt (60 to 2000 SSU) For different values contact SEIM
Admissible temperature	0 to 100°C (32 to 212°F) For different values contact SEIM
Driving speed	750 to 3600 rpm
Average noise level	58 - 68 dB(A) to 2900 rpm according to pump dimension
Reccommended filtration	60 micron max, suction side (not abrasive contaminant) ISO4406 16-16-NAS10
Direction of rotation	clockwise, as seen from the driving side

* Reduced pressure limits apply due to fluid viscosity and driving speed

Consult the performance charts for the individual pump size

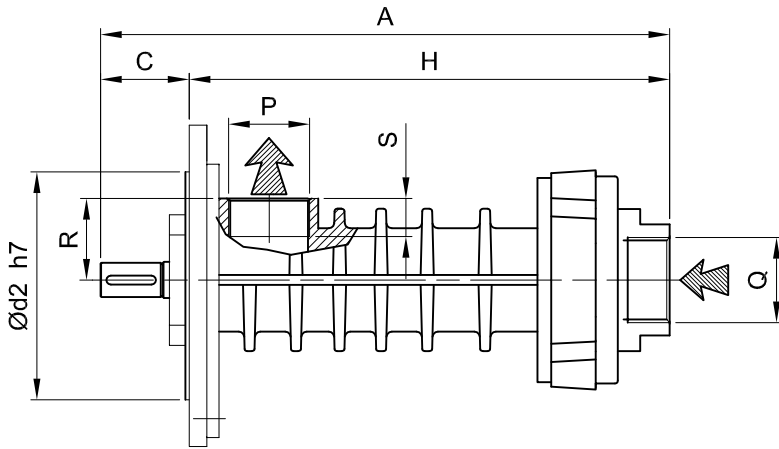
For different functional characteristics, please contact our sales department

Screw pumps - PA series - axial inlet flange

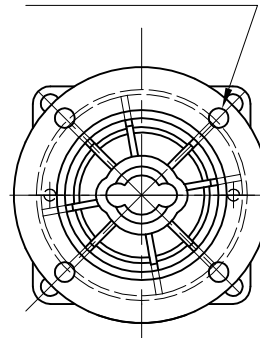
For hydraulic oils, lubricating oils

Admissible delivery pressure (continuous) = 30 bar at 2900 rpm

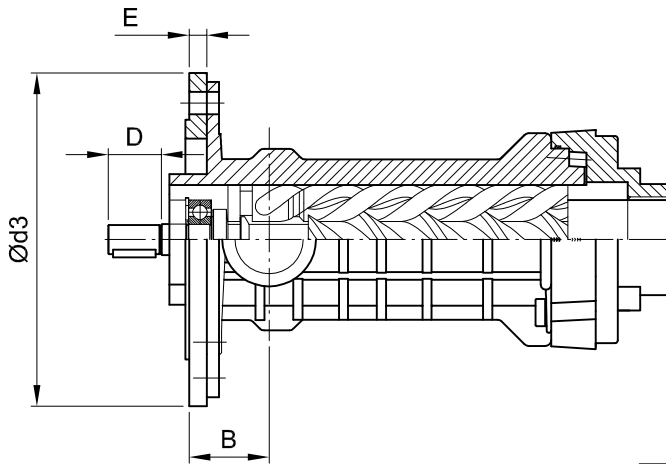
ISO 3019/2 motor connection



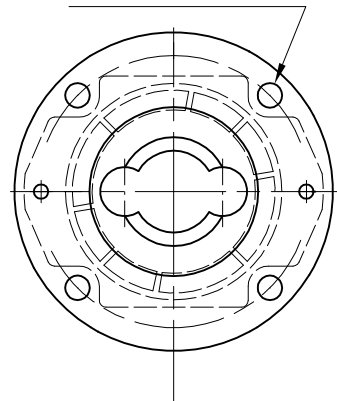
N°4 Ø14 on Ø160



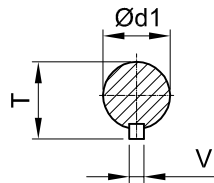
PA025#
PA029#
PA032#
PA040#
PA045#



N°4 Ø18 on Ø200



PA055#
PA060#
PA072#



SD - STE - PA0T - IT 03-10 - 3

Dimensional chart (mm)

MODEL	A	B	C	D	E	H	P GAS	Q GAS	R	S	T	V	d1	d2	d3
PA025#6.0T	318	68	42	35	22	276	1"	1 1/4"	44	24	21,5	6	19	125	188
PA029#6.0T	318	68	42	35	22	276	1"	1 1/4"	44	24	21,5	6	19	125	188
PA032#4.0T	318	68	42	35	22	276	1"	1 1/4"	44	24	21,5	6	19	125	188
PA040#4.0T	331	68	42	35	22	289	1"	2"	50	24	21,5	6	19	125	188
PA045#4.0T	345	68	48	40	22	297	1 1/2"	2"	50	27	27	8	24	125	188
PA055#4.0T	430	86	63	55	22	367	1 1/2"	2 1/2"	60	28	35	10	32	160	234
PA060#4.0T	473	86	63	57	22	410	2"	2 1/2"	60	30	35	10	32	160	234
PA072#4.0T	490	112	63	63	22	427	2"	SAE 4"	72	30	41	10	38	160	234

SEIM srl
Via A. Volta 17
20090 Cusago (MI) ITALY
Tel. (+39) 02.90.39.21.1
Fax. (+39) 02.90.39.21.41
e-mail: seim@seim.it

www.seim.it

SEIM reserve the right to introduce dimensional changes or variation to the products of this technical data

Screw pumps – PCX series

For hydraulic oils, lubricating oils

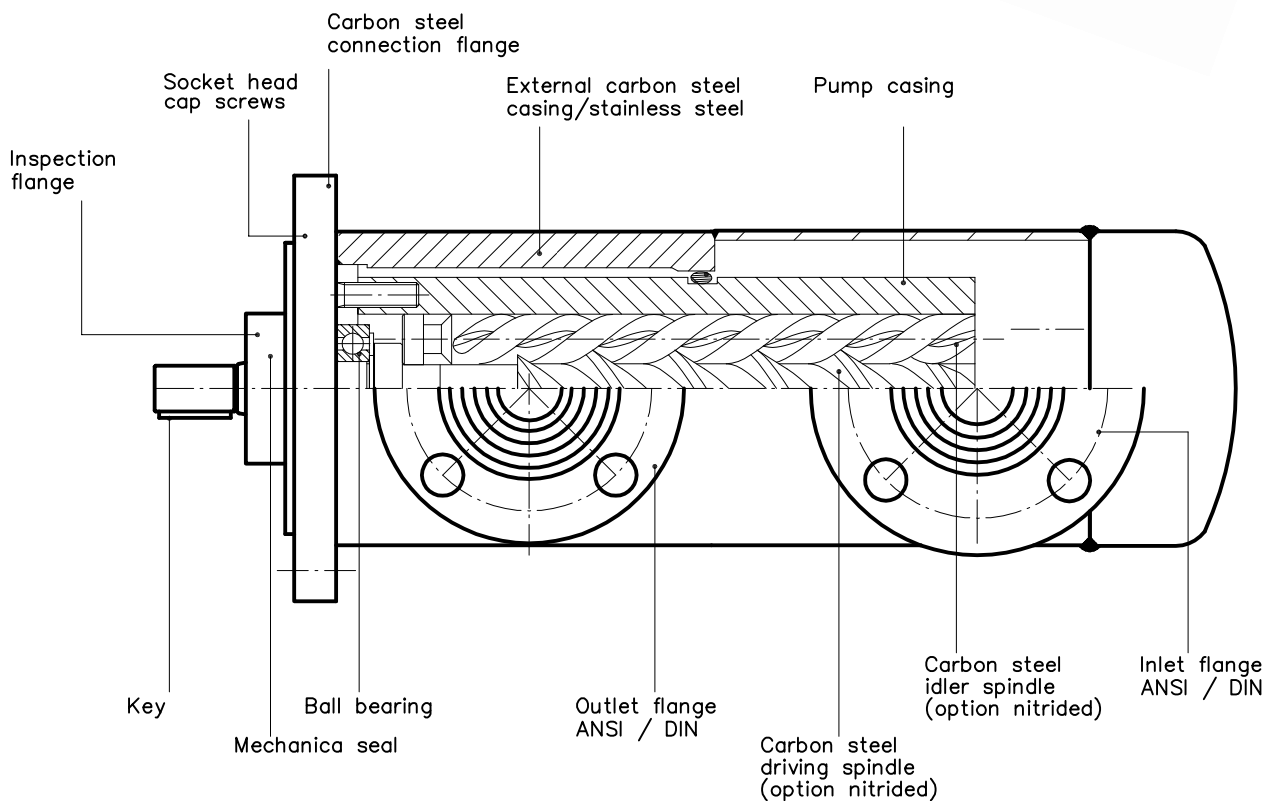
Admissible delivery pressure (continuous) = 30 bar at 2900 rpm and 1450 rpm



Main field of application:

Pumps for lubrication systems and auxiliary cooling, with steel body
Customized versions and API 676 II ed

Section and components



Functional characteristics standard version

Delivery flow	10 to 5000 l/min (2,6 to 1350 USGPM)	
Admissible delivery pressure*	up to 30 bar (453,1 psi) at 1450 rpm and at 2900 rpm	
Admissible suction pressure	-0,5 to 10 bar (-7,3 to 145 psi)	For different values contact SEIM
Kinematics viscosity	10 to 400 cSt STD (< 5000 cSt Special)	For different values contact SEIM
Admissible temperature	0 to 120 °C (32 to 248 °F)	For different values contact SEIM
Driving speed	750 to 3600 rpm (1750 for 083 – 126)	
Average noise level	65 ÷ 75 dB(A) at 2900 rpm according to pump dimension	
Recommended filtration	60 micron max, suction side (not abrasive contaminant) ISO4406 19 / 16 – NAS 10	
Direction of rotation	clockwise, as seen from the driving side	

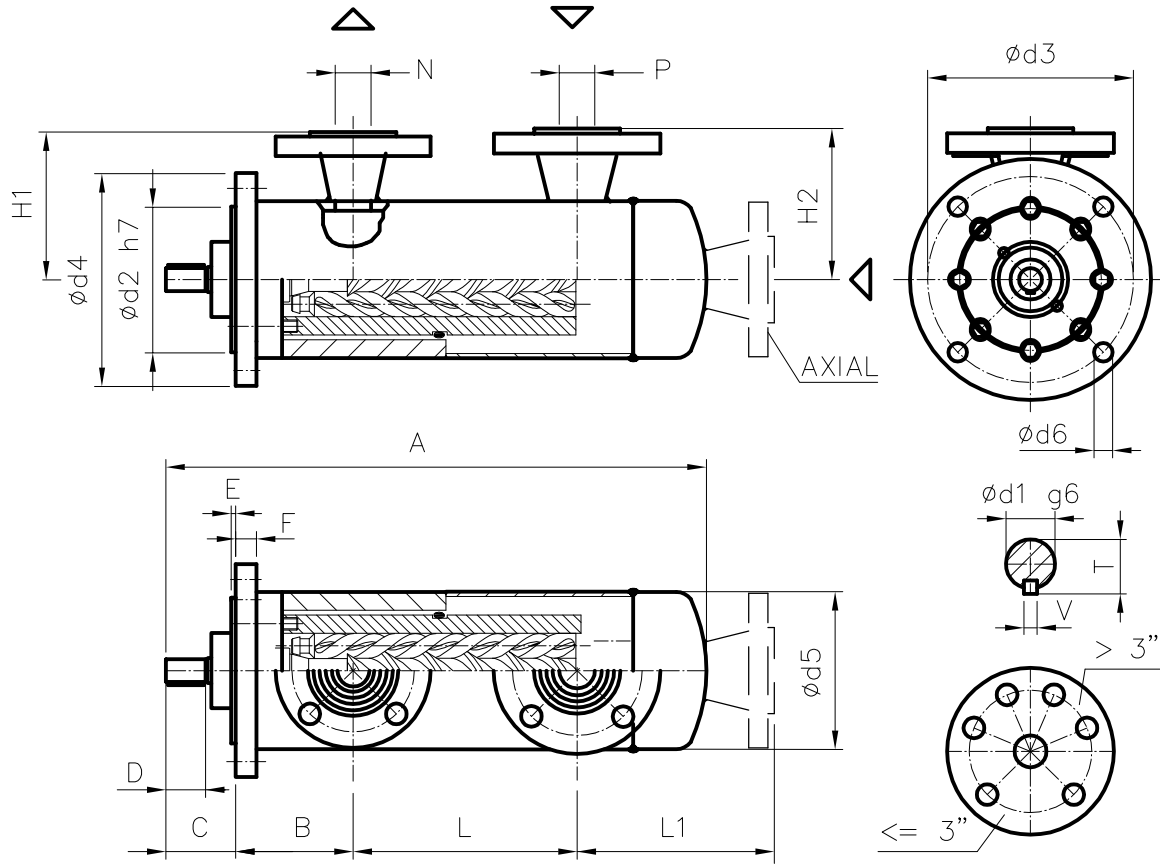
* Reduced pressure limits apply due to fluid viscosity and driving speed
Consult the performance charts for the individual pump size

For different functional characteristics, please contact our sales department

Screw pumps – PCX series

For hydraulic oils, lubricating oils

Admissible delivery pressure (continuous) = 30 bar at 2900 rpm
and 1450 rpm



Dimensional chart (mm)

Inlet flange can be set at origin to 90° and 180°.
N.B. : for other dimensions please contact Seim.

MODEL	A	B	C	D	E	F	H1	H2	L	L1	ANSI 150 RF				d1	d2	d3	d4	d5	d6
											P	N	T	V						
PCX025#6.R	374	93	50	24	5	18	119	119	170	115	1"	1"	16	5	14	160	200	234	141	18
PCX032#4.R	460	93	75	40	5	18	124	124	170	182	1 1/2"	1"	22	6	19	160	200	234	141	18
PCX040#4.R	460	93	75	40	5	18	172	172	170	182	2"	2"	22	6	19	160	200	234	141	18
PCX045#4.R	540	109	82	46	5	18	143	143	190	222	3"	2"	35	10	32	200	250	292	168	22
PCX055#4.R	540	109	82	46	5	18	143	143	195	222	4"	2"	35	10	32	200	250	292	168	22
PCX060#4.R	620	138	83	46	5	18	173	173	250	219	4"	3"	35	10	32	200	250	292	219	22
PCX072#3.R	638	138	101	58	5	18	173	173	250	218	4"	3"	35	10	32	200	250	292	219	22
PCX083#3.R	838	190	127	80	5	30	215	235	350	253	6"	4"	43	12	40	280	320	375	219	22
PCX102#3.R	914	190	144	80	5	30	203	268	350	316	6"	4"	43	12	40	315	360	415	273	22
PCX126#3.R	953	195	144	80	5	30	241	300	400	298	8"	6"	43	12	40	315	360	415	324	22
PCX156#3.R	1150	250	186	94	5	30	327	327	490	322	10"	10"	51	14	50	400	450	515	406	22

SEIM srl

Via A. Volta 17
20090 Cusago (MI) ITALY
Tel. (+39) 02.90.39.21.1
Fax (+39) 02.90.39.21.41
e-mail: seim@seim.it

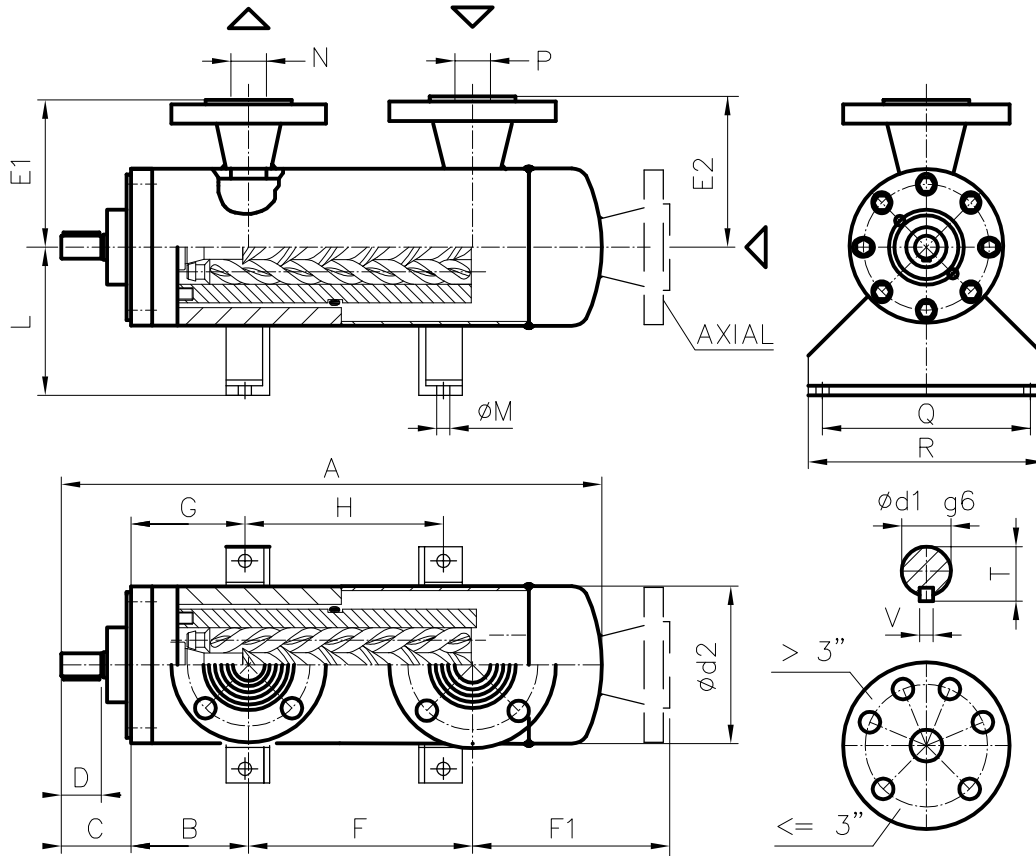
www.seim.it

SEIM reserves the right to introduce dimensional changes or variation to the products of this technical data

Screw pumps – PCX series

For hydraulic oils, lubricating oils

Admissible delivery pressure (continuous) = 30 bar at 2900 rpm
and 1450 rpm



Dimensional chart (mm)

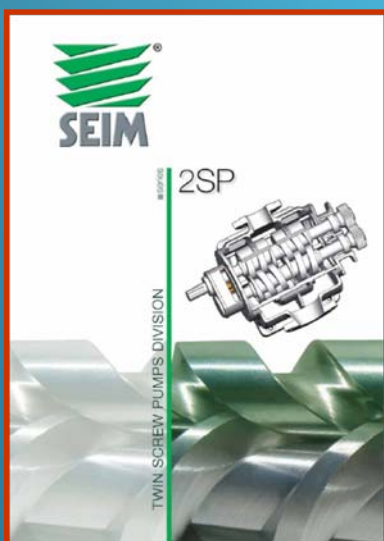
Inlet flange can be set at origin to 90° and 180°.
N.B. : for other dimensions please contact Seim.

MODEL	A	B	C	D	E1	E2	F	F1	G	H	L	ØM	ANSI 150 RF			V	Ød1	Ød2	Q	R
													P	N	T					
PCX025#6.R	374	93	50	24	119	119	170	115	64	210	132	14	1"	1"	16	5	14	141	220	280
PCX032#4.R	460	93	75	40	124	124	170	182	64	210	132	14	1 1/2"	1"	22	6	19	141	220	280
PCX040#4.R	460	93	75	40	172	172	170	182	64	210	132	14	2"	2"	22	6	19	141	220	280
PCX045#4.R	540	109	82	46	143	143	190	222	109	210	160	14	3"	2"	35	10	32	168	220	280
PCX055#4.R	540	109	82	46	143	143	195	222	109	210	160	14	4"	2"	35	10	32	168	220	280
PCX060#4.R	620	138	83	46	173	173	250	219	118	310	180	18	4"	3"	35	10	32	219	220	280
PCX072#3.R	638	138	101	58	173	173	250	218	120	310	180	18	4"	3"	35	10	32	219	220	280
PCX083#3.R	838	190	127	80	215	235	350	253	120	460	280	22	6"	4"	43	12	40	219	320	380
PCX102#3.R	914	190	144	80	203	268	350	316	140	460	280	22	6"	4"	43	12	40	273	320	380
PCX126#3.R	953	195	144	80	241	300	400	287	170	460	280	22	8"	6"	43	12	40	324	320	380
PCX156#3.R	1150	250	186	94	327	327	490	322	170	460	280	22	10"	10"	51	14	50	406	320	380

SEIM srl
Via A. Volta 17
20090 Cusago (MI) ITALY
Tel. (+39) 02.90.39.21.1
Fax (+39) 02.90.39.21.41
e-mail: seim@seim.it

www.seim.it

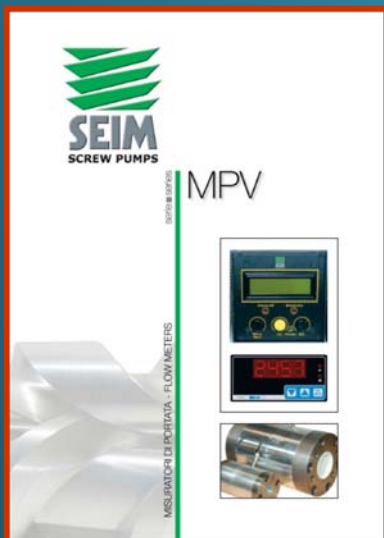
SEIM Manufacturing Program includes also:



Twin Screw Pumps



Relief and Safety valves



Flow Meters

*For
Technical literature,
Brochures and
More Information,*

CONTACT US!

Screw pumps – PCXV series

For hydraulic oils, lubricating oils

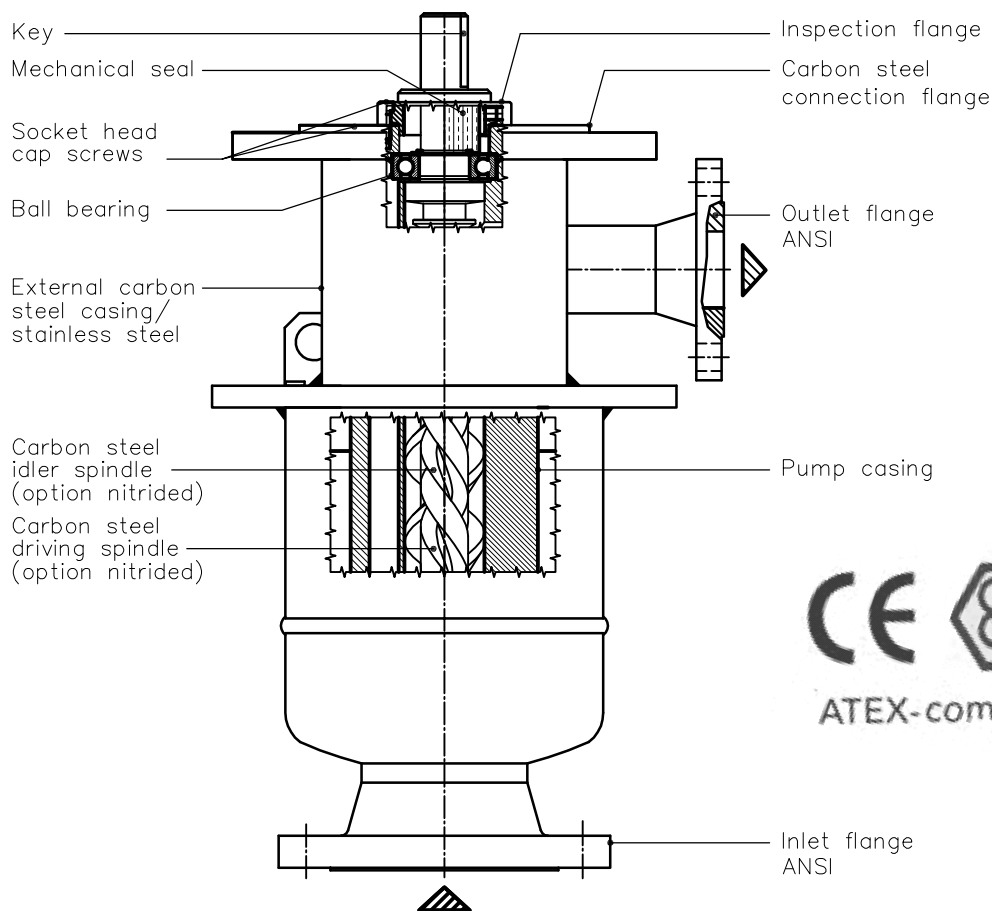
Admissible delivery pressure (continuous) = 30 bar at 2900 rpm and 1450 rpm



Main field of application:

Pumps for lubrication systems and auxiliary cooling, with steel body
Customized versions and API 676 II ed

Section and components



Functional characteristics standard version

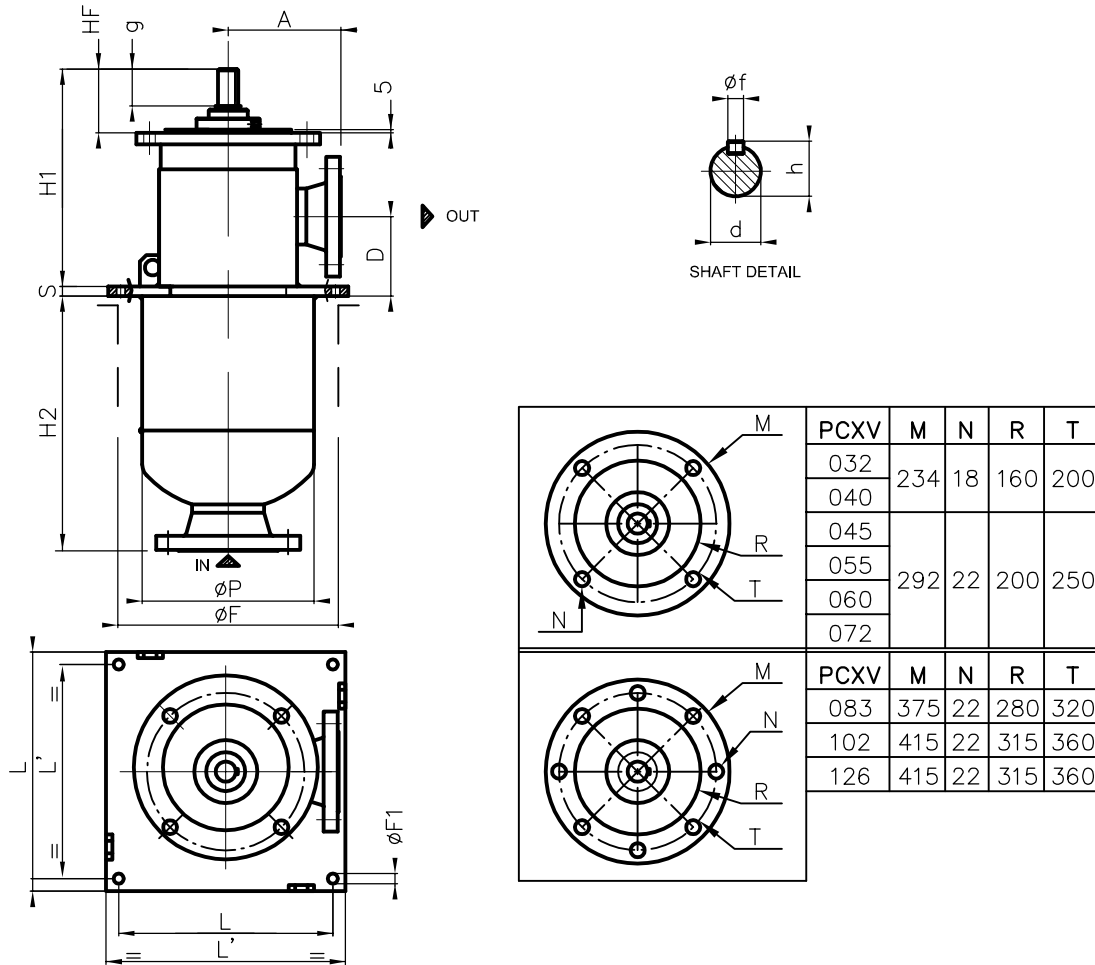
Delivery flow	10 to 2800 l/min (2,6 to 740 USGPM)
Admissible delivery pressure*	up to 30 bar (453,1 psi) at 1450 rpm and at 2900 rpm
Admissible suction pressure	-0,5 to 10 bar (-7,3 to 145 psi) For different values contact SEIM
Kinematics viscosity	10 to 400 cSt STD (< 5000 cSt Special) For different values contact SEIM
Admissible temperature	0 to 120 °C (32 to 248 °F) For different values contact SEIM
Driving speed	750 to 3600 rpm (1750 for 083 – 126)
Average noise level	65 ÷ 75 dB(A) at 2900 rpm according to pump dimension
Recommended filtration	60 micron max, suction side (not abrasive contaminant) ISO4406 19 / 16 – NAS 10
Direction of rotation	clockwise, as seen from the driving side

* Reduced pressure limits apply due to fluid viscosity and driving speed
Consult the performance charts for the individual pump size
For different functional characteristics, please contact our sales department

Screw pumps – PCXV series

For hydraulic oils, lubricating oils

Admissible delivery pressure (continuous) = 30 bar at 2900 rpm
and 1450 rpm



SD - STE - PCXV - GB - 02-09 - 0

Dimensional chart (mm)

Model	General dimension											Shaft dim.				IN-OUT flange ANSI 150 RF	
	A	D	$\Phi F1$	H1	H2	HF	L	L'	S	ΦF	ΦP	Φd (g6)	h	f	g	IN	OUT
PCXV032	180	80	16	223	245	75	280	240	15	260	169	19	22	6	40	2"	1"
PCXV040	180	80	16	223	245	75	280	240	15	260	169	19	22	6	40	2"	2"
PCXV045	192	95	16	318	319	82	320	280	15	280	219	32	35	10	46	3"	2"
PCXV055	192	95	16	319	322	82	320	280	15	280	219	32	35	10	46	4"	2"
PCXV060	179	126	16	328	405	83,5	380	340	15	350	273	32	35	10	46	4"	3"
PCXV072	179	126	16	345	405	102	380	340	15	350	273	32	35	10	58	4"	3"
PCXV083	215	206	22	493	388	127	550	500	20	500	324	40	43	12	80	6"	4"
PCXV102	203	196	22	509	533	144	550	500	20	500	324	40	43	12	80	6"	4"
PCXV126	241	250	22	533	466	144	550	500	20	500	407	40	43	12	80	8"	6"

SEIM srl
Via A. Volta 17
20090 Cusago (MI) ITALY
Tel. (+39) 02.90.39.21.1
Fax (+39) 02.90.39.21.41
e-mail: seim@seim.it

www.seim.it

SEIM reserves the right to introduce dimensional changes or variation to the products of this technical data

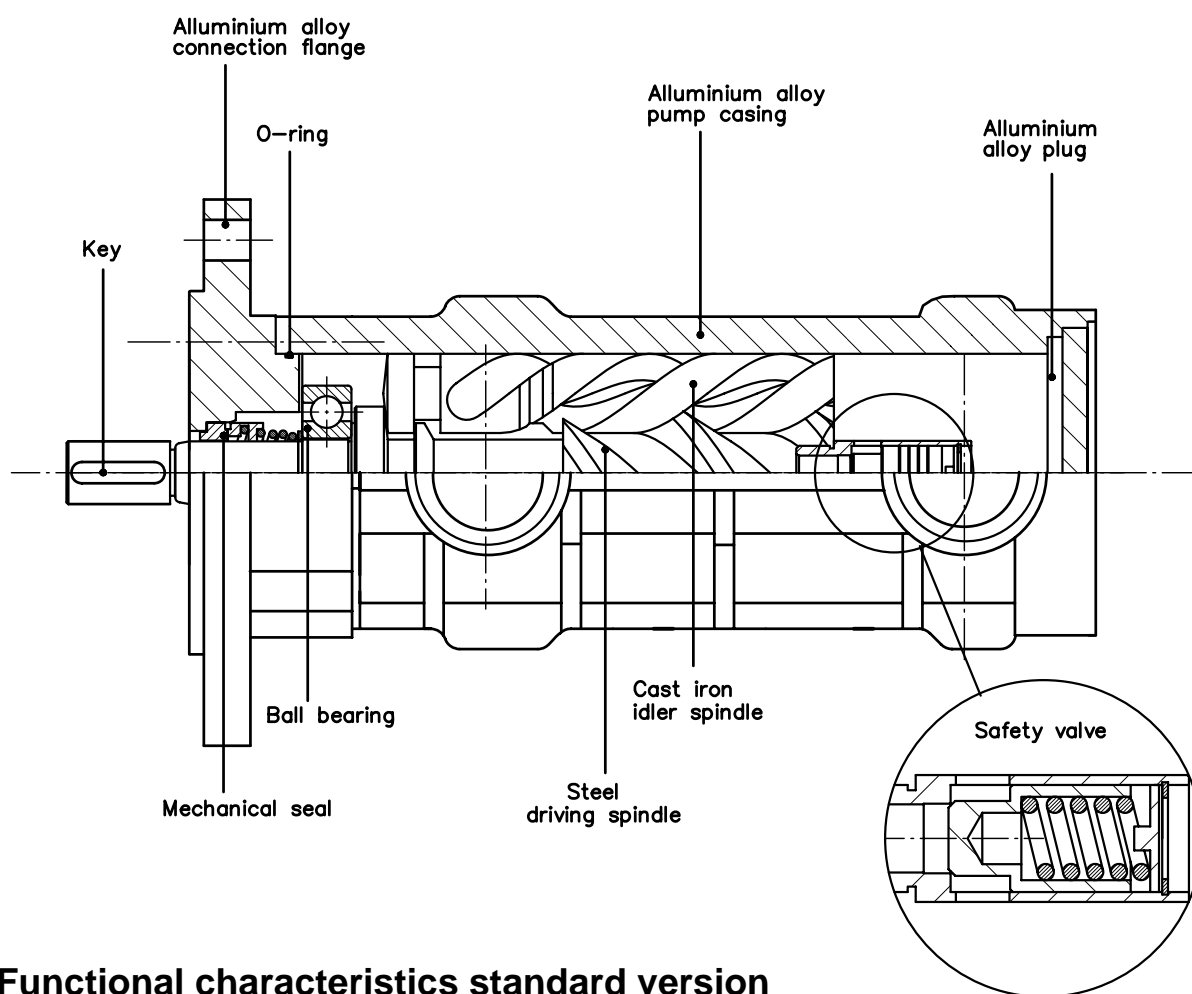
Screw pumps – PDA series with valve

For hydraulic oils, lubricating oils
 Admissible delivery pressure 10 bar
 Standard valve setting 6 bar

Main field of application:

Low pressure lubrication systems, auxiliary filtration systems, cooling systems

Section and components



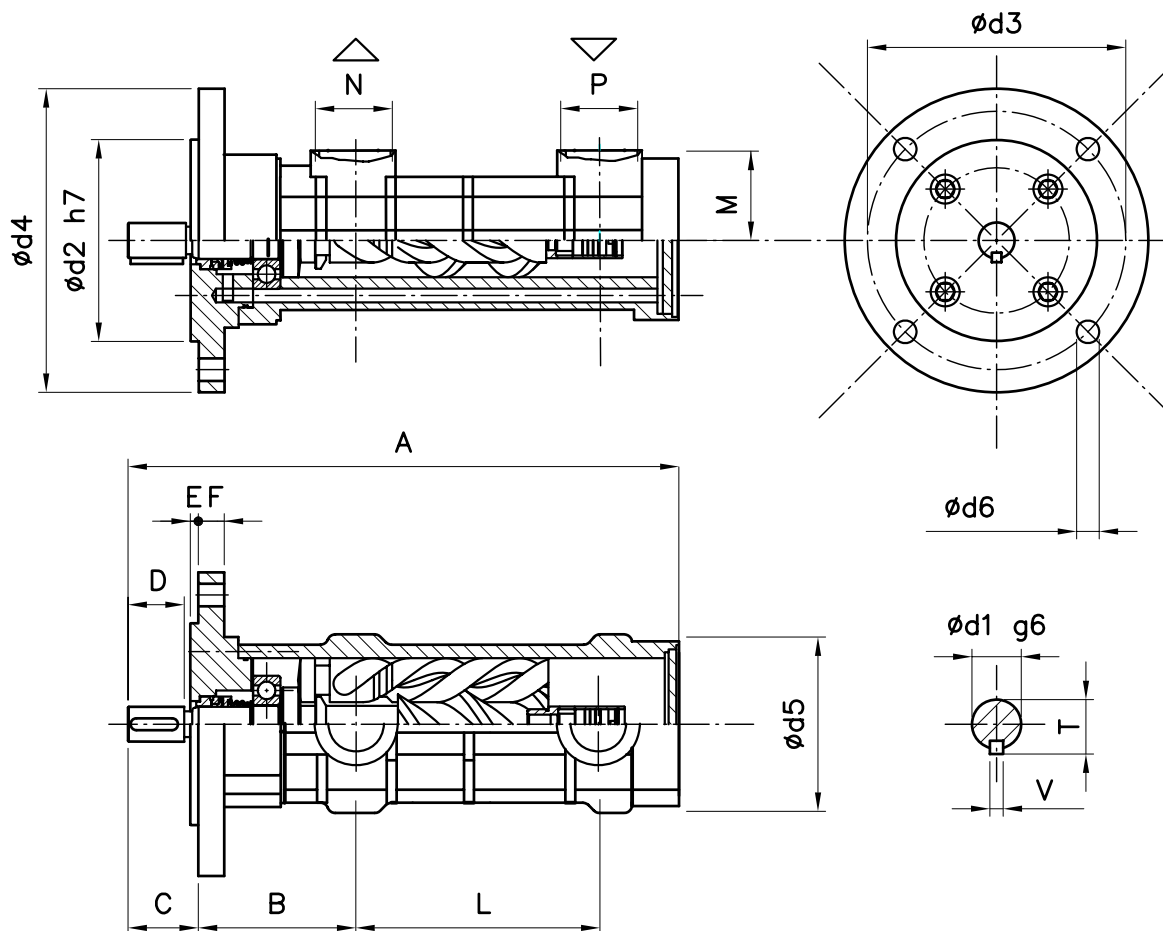
Functional characteristics standard version

Delivery flow	21 to 160 l/min (5,5 to 42,2 USGPM)	
Admissible delivery pressure*	up to 10 bar (145 psi)	
Admissible suction pressure	-0,4 to 2 bar (-5,8 to 29 psi)	For different values contact SEIM
Kinematics viscosity	20 to 400 cSt	For different values contact SEIM
Admissible temperature	0 to 100 °C (32 to 212 °F)	For different values contact SEIM
Driving speed	750 to 3600 rpm	
Average noise level	56 ÷ 62 dB(A) at 2900 rpm according to pump dimension	
Recommended filtration	60 micron max, suction side (not abrasive contaminant) ISO4406 19 / 16 – NAS 10	
Direction of rotation	clockwise, as seen from the driving side	

* Reduced pressure limits apply due to fluid viscosity and driving speed
 Consult the performance charts for the individual pump size
 For different functional characteristics, please contact our sales department

Screw pumps – PDA series with valve

For hydraulic oils, lubricating oils
 Admissible delivery pressure 10 bar
 Standard valve setting 6 bar



NF - STE - PDA - GB - 02.07 - 2

Dimensional chart (mm)

SIZE	A	B	C	D	E	F	L	M	N	P	T	V	d1	d2	d3	d4	d5	d6
									GAS									
PDA029#2..01.	286	82	42	37	5	14	122	44	1"	1"	21,5	6	19	100	125	150	95	11
PDA032#2..01.																		
PDA040#2..01.	307	82	42	37	5	14	140	48	1¼"	1¼"	21,5	6	19	100	125	150	95	11

SEIM srl

Via A. Volta 17
 20090 Cusago (MI) ITALY
 Tel. (+39) 02.90.39.21.1
 Fax (+39) 02.90.39.21.41
 e-mail: seim@seim.it

www.seim.it

SEIM reserves the right to introduce dimensional changes or variation to the products of this technical data

Screw pumps – PDA series with bell housing

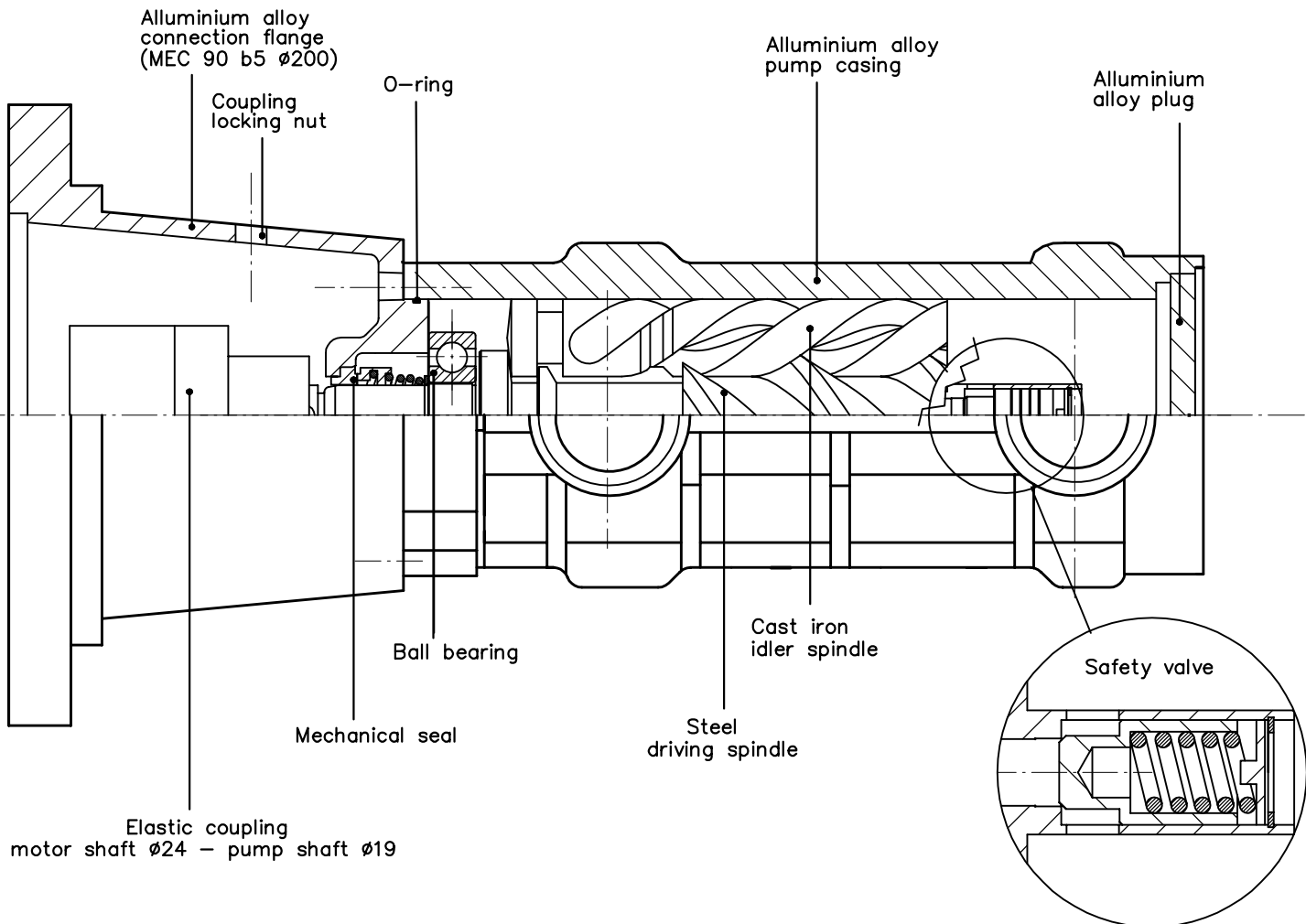
For hydraulic oils, lubricating oils
 Admissible delivery pressure 10 bar
 Standard valve setting 6 bar



Main field of application:

Low pressure lubrication systems, auxiliary filtration systems, cooling systems

Section and components



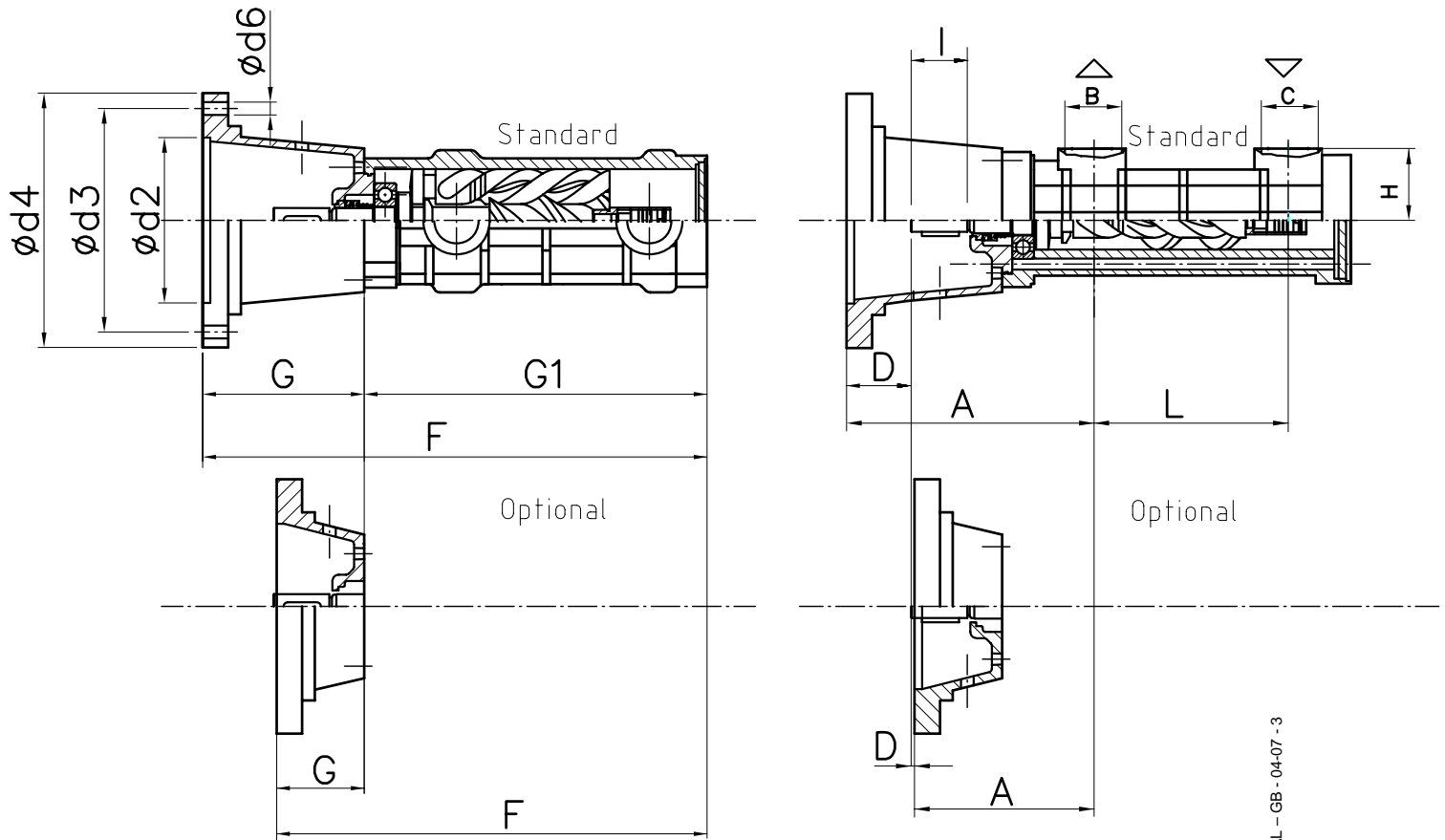
Functional characteristics standard version

Delivery flow	21 to 160 l/min (5,5 to 42,2 USGPM)	
Admissible delivery pressure*	up to 10 bar (145 psi)	
Admissible suction pressure	-0,4 to 2 bar (-5,8 to 29 psi)	For different values contact SEIM
Kinematics viscosity	20 to 400 cSt	For different values contact SEIM
Admissible temperature	0 to 100 °C (32 to 212 °F)	For different values contact SEIM
Driving speed	750 to 3600 rpm	
Average noise level	56 ÷ 62 dB(A) at 2900 rpm according to pump dimension	
Recommended filtration	60 micron max, suction side (not abrasive contaminant) ISO4406 19 / 16 – NAS 10	
Direction of rotation	clockwise, as seen from the driving side	

* Reduced pressure limits apply due to fluid viscosity and driving speed
 Consult the performance charts for the individual pump size
 For different functional characteristics, please contact our sales department

Screw pumps – PDA series with bell housing

For hydraulic oils, lubricating oils
 Admissible delivery pressure 10 bar
 Standard valve setting 6 bar



NF - STE - PDAL - GB - 04-07 - 3

Dimensional chart (mm)

MODELLO	A	B	C	D	F	G	G1	H	I	L	d2	d3	d4	d6
PDA029#2..01 STD.	191	1"	1"	67	353	127	226	44	35	122	130	165	200	M10
PDA032#2..01 STD.														
PDA040#2..01 STD.	191	1 1/4"	1 1/4"	67	374	127	247	48		140	130	165	200	
PDA029#2..01 OPT.	122	1"	1"	2	284	58	226	44		122	130	165	200	
PDA032#2..01 OPT.														
PDA040#2..01 OPT.	122	1 1/4"	1 1/4"	2	305	58	247	48	140	130	165	200		

SEIM srl

Via A. Volta 17
 20090 Cusago (MI) ITALY
 Tel. (+39) 02.90.39.21.1
 Fax (+39) 02.90.39.21.41
 e-mail: seim@seim.it

www.seim.it

SEIM reserves the right to introduce dimensional changes or variation to the products of this technical data

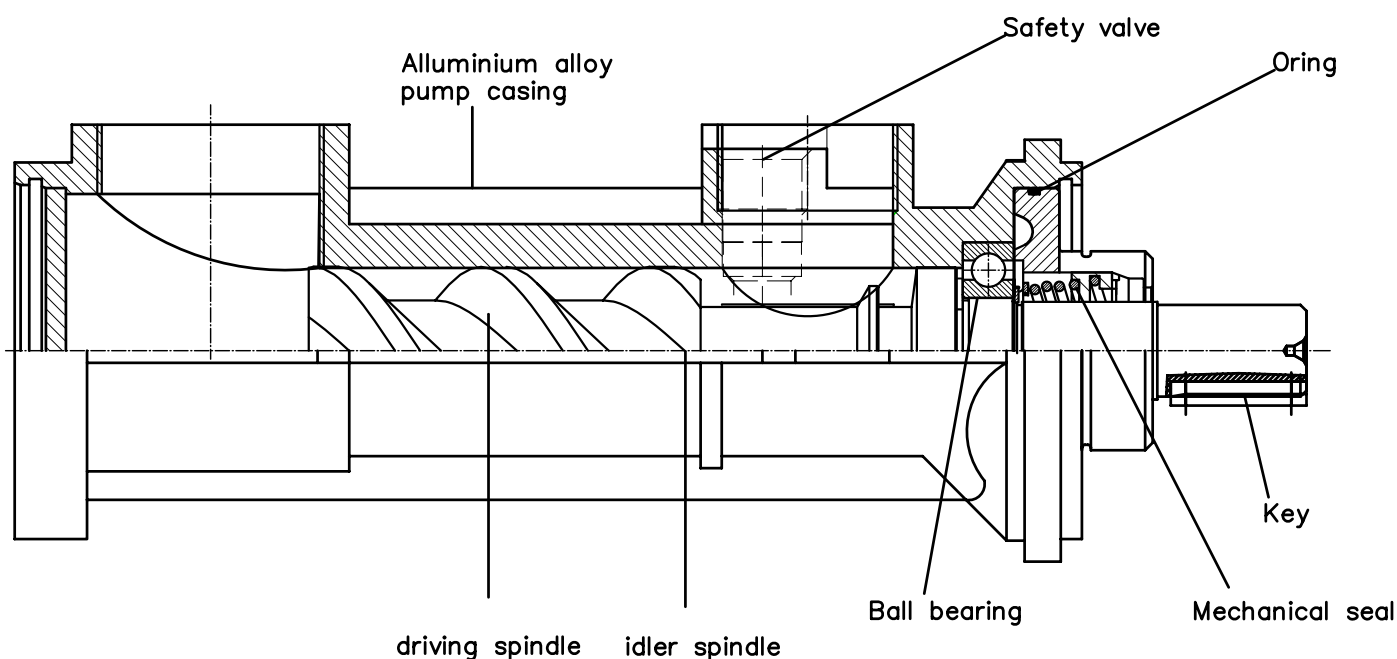
Screw pumps – PDK series with valve

For hydraulic oils, lubricating oils
 Admissible delivery pressure 16 bar
 Standard valve setting 10 bar

Main field of application:

Low pressure lubrication systems, auxiliary filtration systems, cooling systems

Section and components



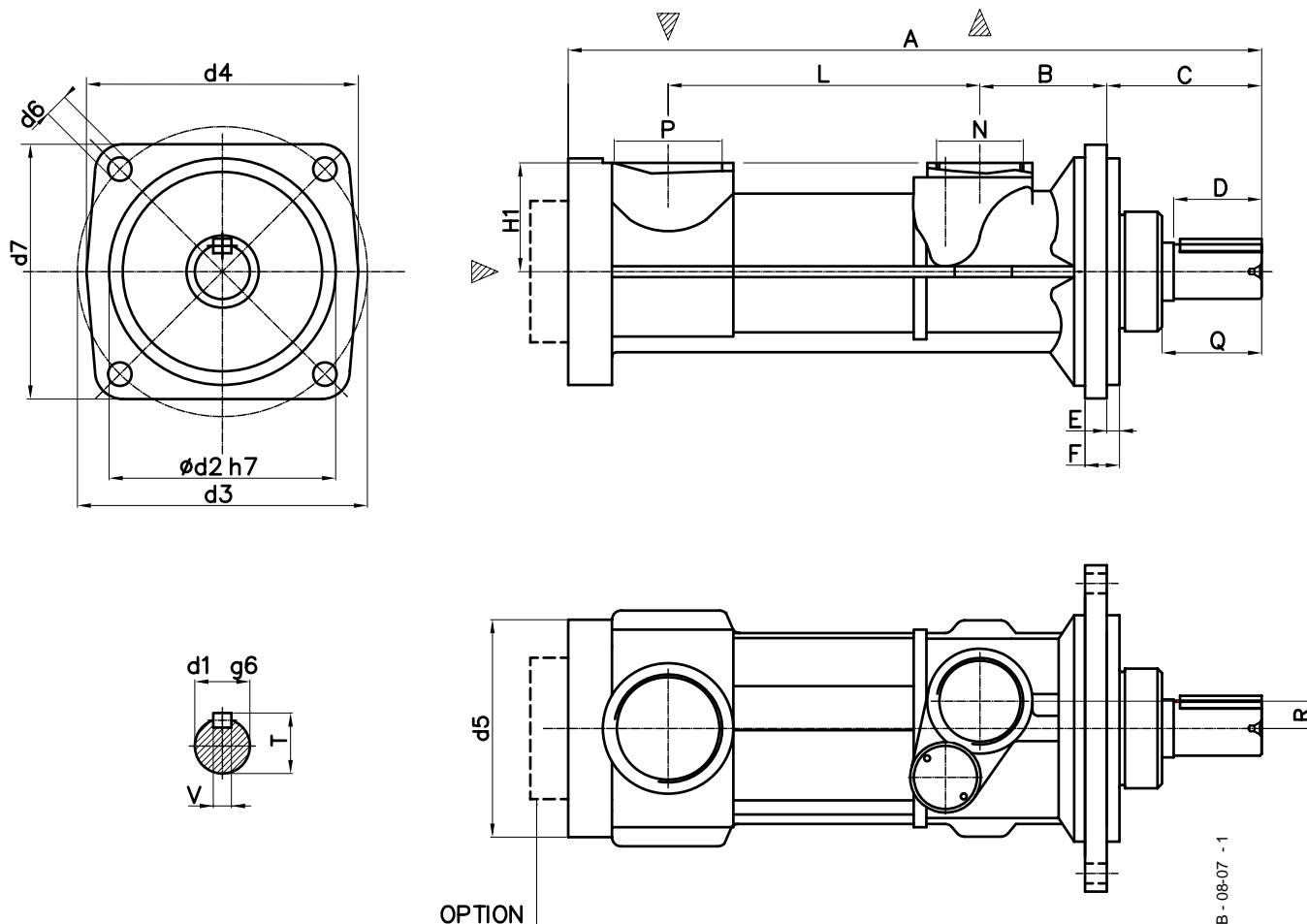
Functional characteristics standard version

Delivery flow	80 to 460 l/min (21 to 119 USGPM)	
Admissible delivery pressure*	up to 16 bar (232 psi)	
Admissible suction pressure	-0,4 to 2 bar (-5,8 to 29 psi)	For different values contact SEIM
Kinematics viscosity	20 to 400 cSt	For different values contact SEIM
Admissible temperature	0 to 100 °C (32 to 212 °F)	For different values contact SEIM
Driving speed	750 to 3600 rpm	
Average noise level	56 ÷ 64 dB(A) at 2900 rpm according to pump dimension	
Recommended filtration	60 micron max, suction side (not abrasive contaminant) ISO4406 19 / 16 – NAS 10	
Direction of rotation	clockwise, as seen from the driving side	

* Reduced pressure limits apply due to fluid viscosity and driving speed
 Consult the performance charts for the individual pump size
 For different functional characteristics, please contact our sales department

Screw pumps – PDK series with valve

For hydraulic oils, lubricating oils
 Admissible delivery pressure 16 bar
 Standard valve setting 10 bar



NF - STE - PDK - GB - 08-07 - 1

Dimensional chart (mm)

SIZE	A	B	C	D	E	F	P	N	L	H1	Q	R	T	V	d1	d2	d3	d4	d5	d6	d7
PDK045#3....	378	70	81	47	7	19	2"	1 1/2"	172	76	51	15	33	8	30	125	160	150	135	13	141
PDK055#3....	428	84					2 1/2"	2"	198	90		20							160		

SEIM srl
 Via A. Volta 17
 20090 Cusago (MI) ITALY
 Tel. (+39) 02.90.39.21.1
 Fax (+39) 02.90.39.21.41
 e-mail: seim@seim.it

www.seim.it

SEIM reserves the right to introduce dimensional changes or variation to the products of this technical data

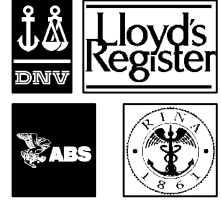
Screw pumps - PHS series

For hydraulic oils, lubricating oils. Special version for heavy fuel.
 Admissible delivery pressure (continuous) = 16 bar from 1000 to 3600 rpm

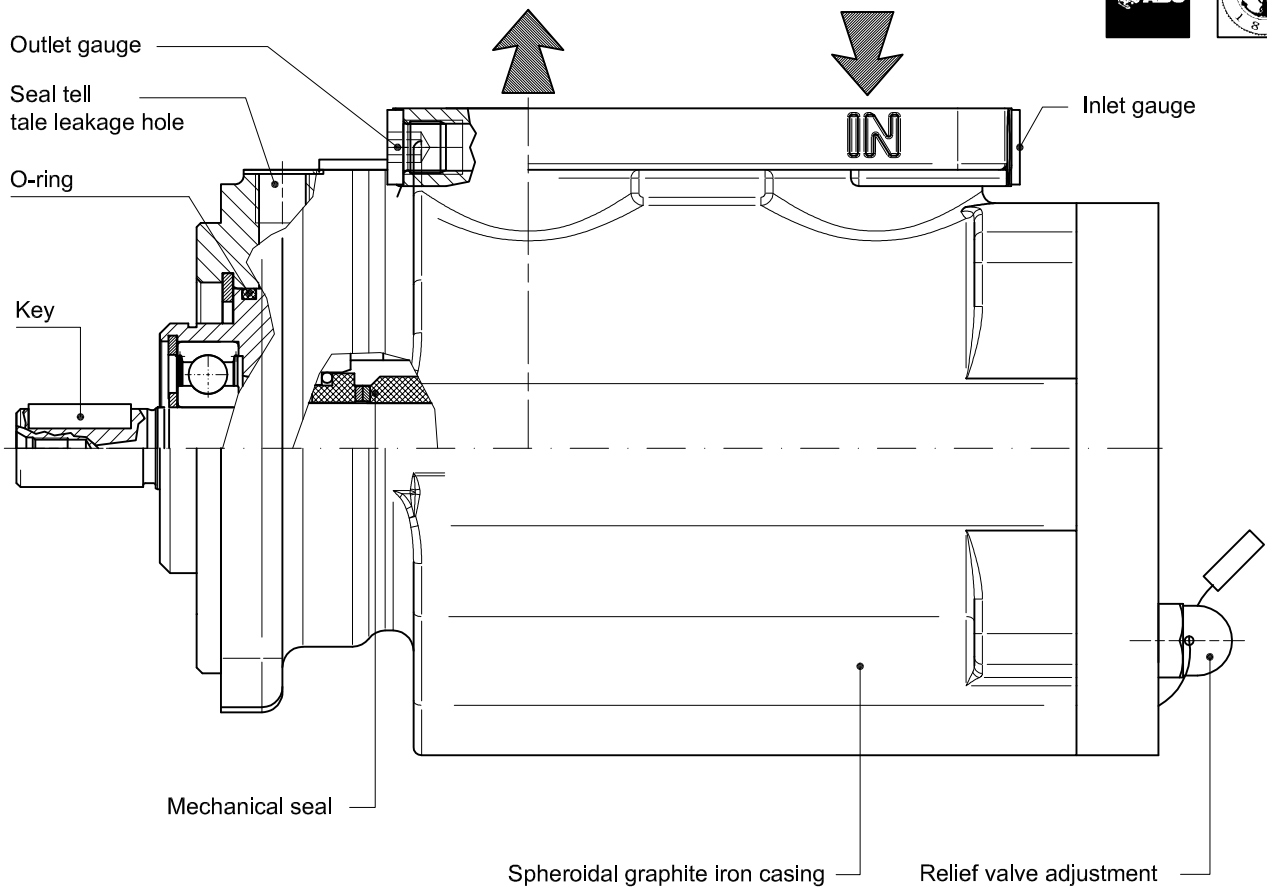


Main field of application

Pumps for lubrication systems and auxiliary cooling, with relief valve.



Section and components



Functional characteristics standard version

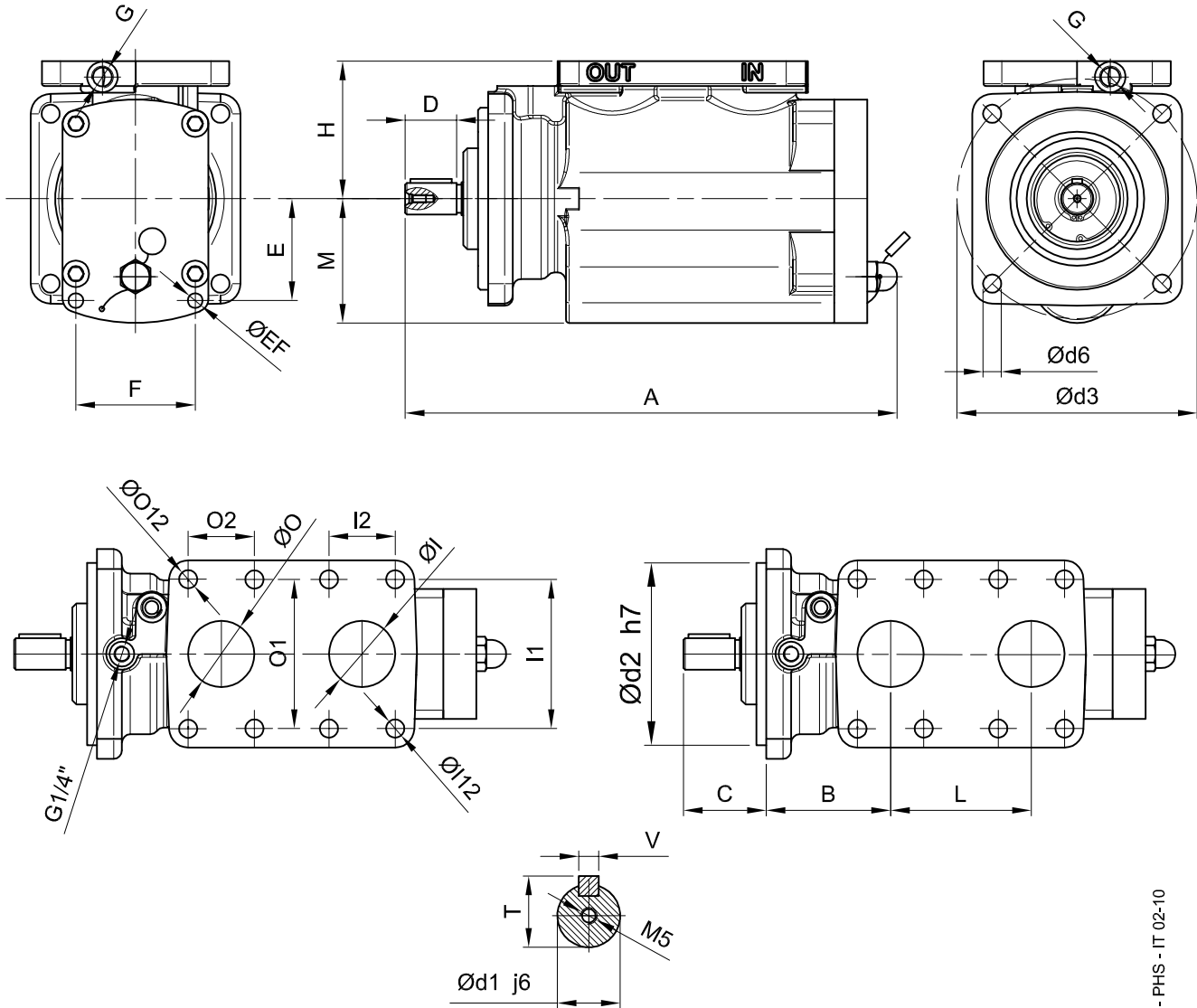
Delivery flow	up to 170 l/min (up to 45 USGPM)
Admissible delivery pressure *	up to 16 bar (232 psi) from 1000 to 3600 rpm
Admissible suction pressure	from -0,7 to 10 bar (from -10 to 145 psi) For different values contact SEIM
Kinematics viscosity	from 10 to 400 cSt STD (1,2 - 5000 cSt special) For different values contact SEIM
Admissible temperature	from 0 to 120 °C (32 a 248 °F) For different values contact SEIM max 140 °C (284 °F) special
Driving speed	from 1000 to 3600 rpm
Average noise level	60 - 75 dB(A) at 3600 rpm according to pump dimension
Reccomended oil filtration	60 micron max (not abrasive contaminant) ISO 4406 19/16 - NAS 10
Direction of rotation	Clockwise, as seen from the driving side

* Reduced pressure limits apply due to fluid viscosity and driving speed
 Consult the performance charts for the individual pump size
 For different functional characteristics, please contact our sales department

Screw pumps - PHS series

For hydraulic oils, lubricating oils. Special version for heavy fuel.

Admissible delivery pressure (continuous) = 16 bar from 1000 to 3600 rpm



TD - STE - PHS - IT 02-10

Dimensional chart (mm)

MODEL	A	B	C	D	E	F	EF Ø	G	H	L	M	T	V	d1 Ø	d2 Ø	d3 Ø	d6 Ø	IN			OUT				
																		I1	I2	I12 Ø	I Ø	O1	O2	O12 Ø	O Ø
PHS025	274	60	50	29	61,5	63,6	9	1/8"	73	60	68	16	5	14	110	130	9	62	28	9	25	62	28	9	25
PHS032	288	68	50	29	61,5	63,6	9	1/8"	73	75	68	16	5	14	110	130	9	90	40	11	40	62	28	9	25
PHS040	297	75	50	34	61,5	72	9	1/8"	83	85	75	21,5	6	19	120	145	11	90	40	11	40	90	40	11	40

SEIM srl
Via A. Volta 17
20090 Cusago (MI) ITALY
Tel. (+39) 02.90.39.21.1
Fax. (+39) 02.90.39.21.41
e-mail: seim@seim.it

www.seim.it

SEIM reserves the right to introduce dimensional changes or variation to the products of this technical data

Screw pumps – POF series

Balanced idler spindles

For hydraulic oils, lubricating oils

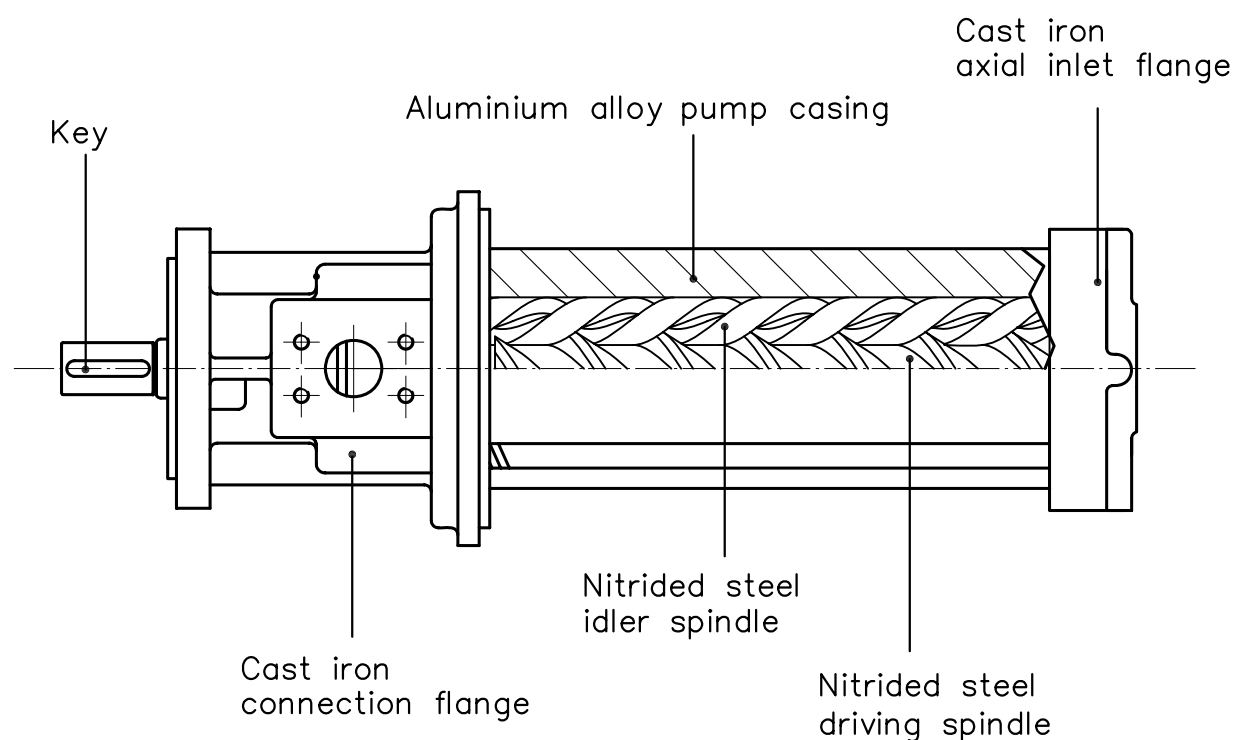
Admissible delivery pressure (continuous) = 120 bar at 2900 rpm



Main field of application:

Industrial general purpose, high pressure range

Section and components



Functional characteristics standard version

Delivery flow	20 to 600 l/min (5,2 to 159 USGPM)	
Admissible delivery pressure*	up to 120 bar (1740 psi) continuous at 2900 rpm	
Admissible suction pressure	-0,5 to 10 bar (-7,3 to 145 psi)	For different values contact SEIM
Kinematics viscosity	to 10 cSt to 400 cSt	For different values contact SEIM
Admissible temperature	0 to 120 °C (32 to 248 °F)	For different values contact SEIM
Driving speed	2900 to 3500 rpm (1450 rpm up to 100 bar - 1450 psi)	
Average noise level	58 ÷ 72 dB(A) at 2900 rpm according to pump dimension	
Recommended filtration	40 micron max, suction side (not abrasive contaminant) ISO4406 18 / 15 – NAS 9	
Direction of rotation	Clockwise, as seen from the driving side	

* Reduced pressure limits apply due to fluid viscosity and driving speed
Consult the performance charts for the individual pump size

For different functional characteristics, please contact our sales department

Screw pumps – POF series

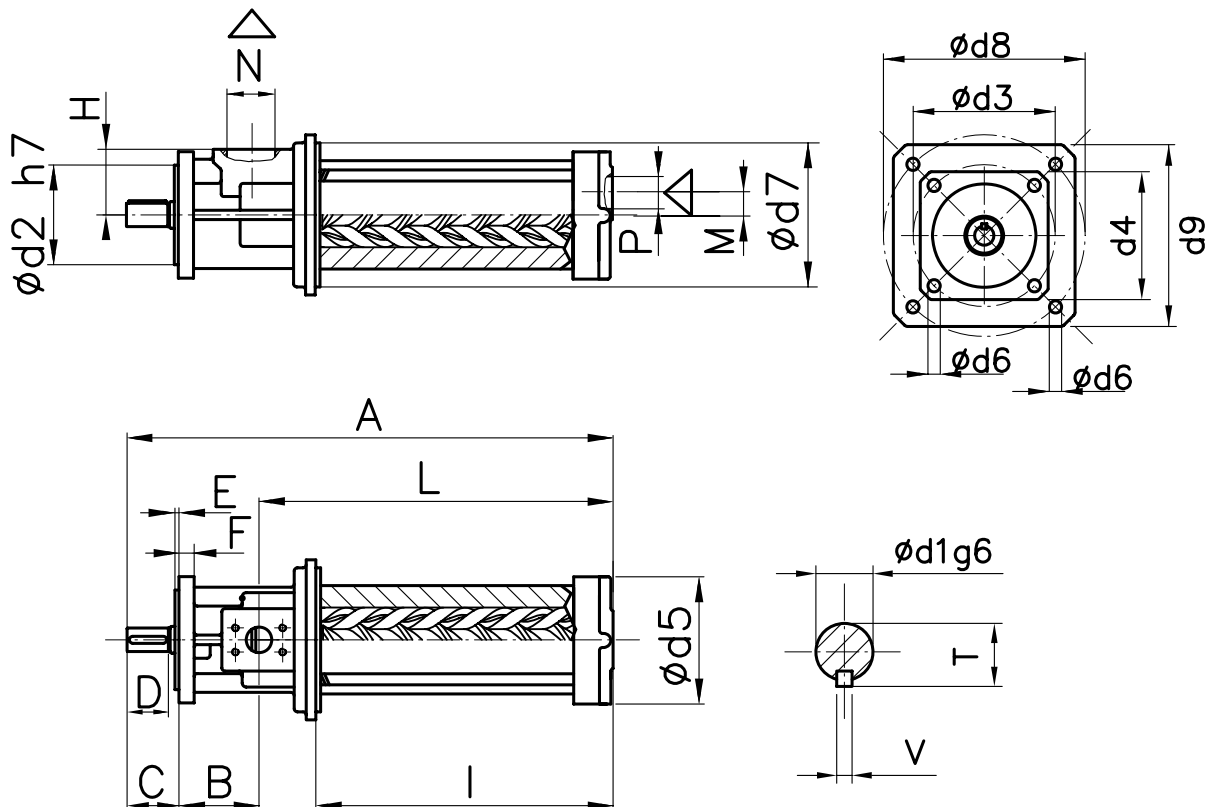
Balanced idler spindles

For hydraulic oils, lubricating oils

Admissible delivery pressure (continuous) = 120 bar at 2900 rpm

Main field of application:

Industrial general purpose, high pressure range



NF - STE - POF - GB - 02 - 08 - 2

Dimensional chart (mm)

MODELLO	A	B	C	D	E	F	H	I	L	M	N	P	T	V	d1	d2	d3	d4	d5	d6	d7	d8	d9
											SAE												
POF025#6...	397	76	43	35	7	15	74,5	207	278	25	1"	1"	21,5	6	19	100	125	140	136	11	140	160	160
POF029#6...	397	76	43	35	7	15	74,5	207	278	25	1"	1"	21,5	6	19	100	125	140	136	11	140	160	160
POF032#6...	441	76	43	35	7	15	74,5	251	322	25	1"	1"	21,5	6	19	100	125	140	136	11	140	160	160
POF040#6...	530	96	49	40	7	15	81	315	386	25	1½"	1½"	24,5	6	22	125	160	152	178	13	180	215	200
POF045#6...	583	96	49	40	7	15	81	361	440	30	1½"	1½"	27	8	24	125	160	152	178	13	180	215	200
POF055#6...	669	126	64	55	7	15	100	408	479	28	2"	3"	35	10	32	125	160	200	200	13	235	265	265
POF060#6...	726	126	64	55	7	15	100	465	536	28	2"	3"	35	10	32	125	160	200	200	13	235	265	265

SEIM srl
 Via A. Volta 17
 20090 Cusago (MI) ITALY
 Tel. (+39) 02.90.39.21.1
 Fax (+39) 02.90.39.21.41
 e-mail: seim@seim.it

www.seim.it

SEIM reserves the right to introduce dimensional changes or variation to the products of this technical data

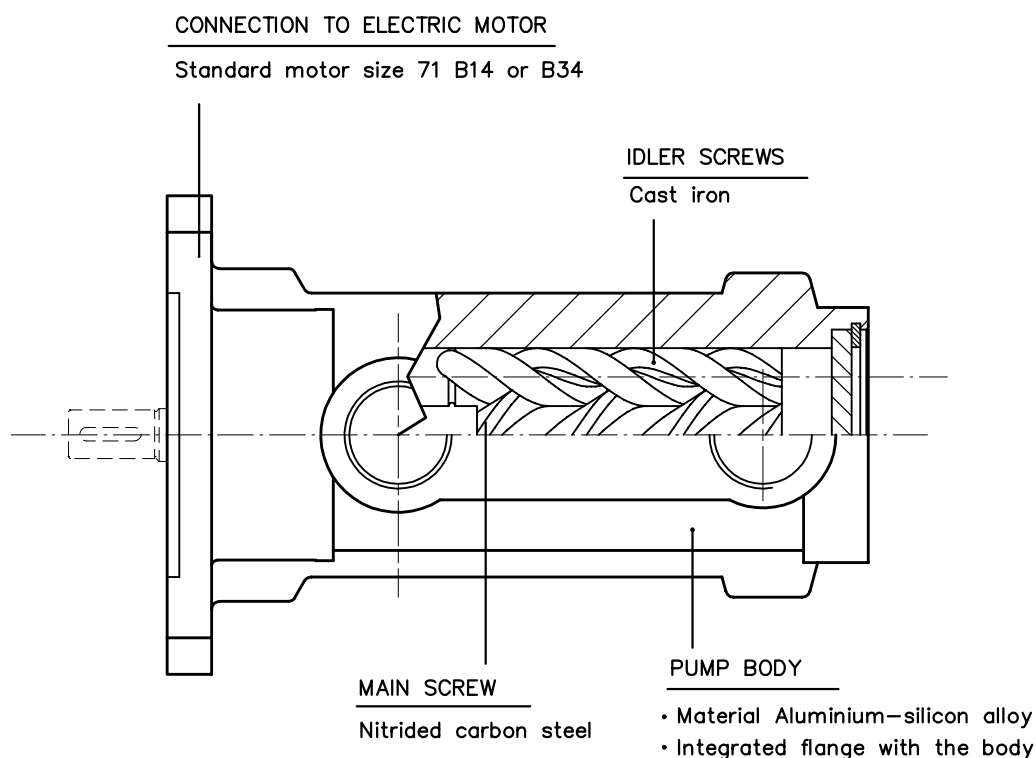
Screw pumps – PQJ series

For hydraulic oils, lubricating oils
 Admissible delivery pressure 10 bar
 With security valve (STD. 5 bar)

Main field of application:

- Auxiliary lubrication systems
- Female shaft standard version mating el. motor 71 B14 or B34
- Male shaft version - bell housing plus coupling for MEC 71 and MEC 80/90.

Section and components



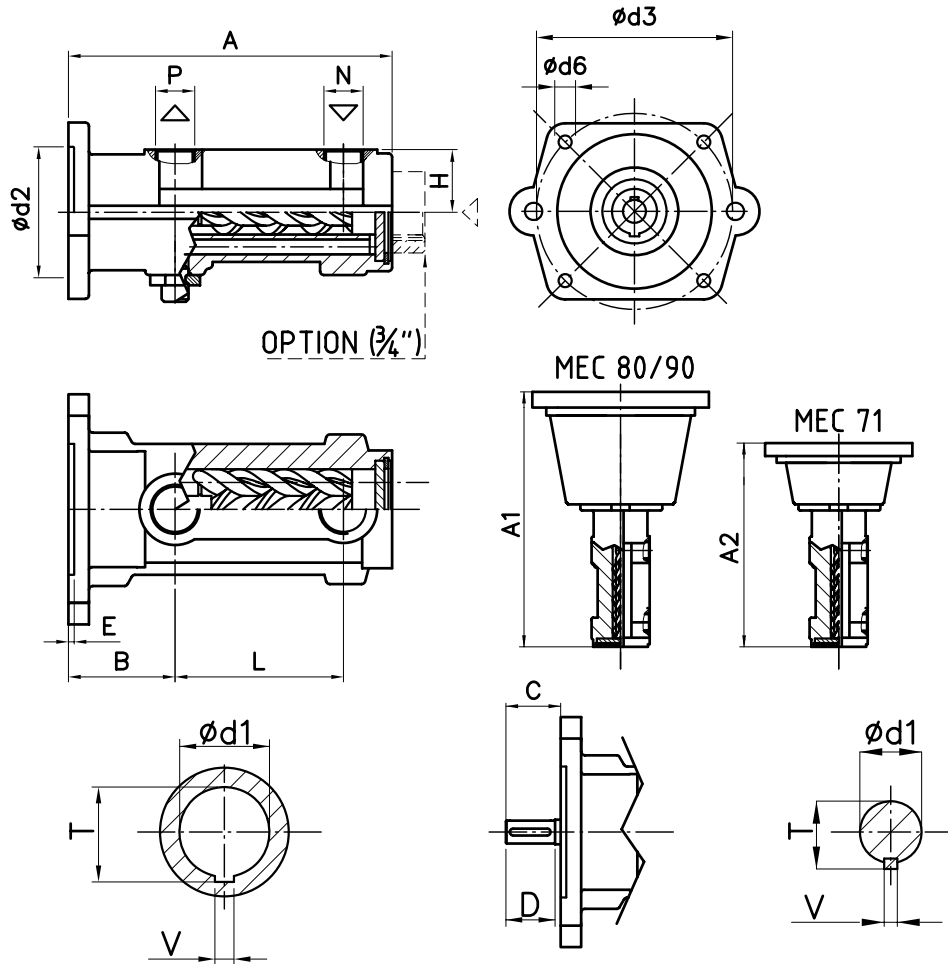
Functional characteristics standard version

Delivery flow	3 to 38 l/min (0,8 to 10 USGPM)	
Admissible delivery pressure*	up to 10 bar (145 psi) continuous	
Admissible suction pressure	-0,2 to 1 bar (-3 to 14,5 psi)	For different values contact SEIM
Kinematics viscosity	10 to 400 cSt	For different values contact SEIM
Admissible temperature	0 to 100 °C (32 to 212 °F)	For different values contact SEIM
Driving speed	750 to 3600 rpm	
Average noise level	56 dB(A) at 2900 rpm	
Recommended filtration	60 micron max, suction side (not abrasive contaminant) ISO4406 19 / 16 – NAS 10	
Direction of rotation	clockwise, as seen from the driving side	

* Reduced pressure limits apply due to fluid viscosity and driving speed
 Consult the performance charts for the individual pump size
 For different functional characteristics, please contact our sales department

Screw pumps – PQJ series

For hydraulic oils, lubricating oils
 Admissible delivery pressure 10 bar
 With security valve (STD. 5 bar)



NF - STE - PQJ - GB - 04-07 - 5

Dimensional chart (mm)

SIZE	A	A1	A2	B	C	E	H	L	N	P	D	d2	d3	d6	d1	T	V
GAS																	
VERSION WITH FEMALE SHAFT															FEMALE SHAFT		
PQJ020#3...	173	-	-	57	-	4	33	90	3/4"	3/4"	-	70	85	6,5	14	16	5
PQJ025#3...																	
VERSION WITH MALE SHAFT															MALE SHAFT		
PQJ020#3...	173	300	245	57	30	4	33	90	3/4"	3/4"	32.5	70	85	6,5	14	16	5
PQJ025#3...																	

SEIM srl
 Via A. Volta 17
 20090 Cusago (MI) ITALY
 Tel. (+39) 02.90.39.21.1
 Fax (+39) 02.90.39.21.41
 e-mail: seim@seim.it

www.seim.it

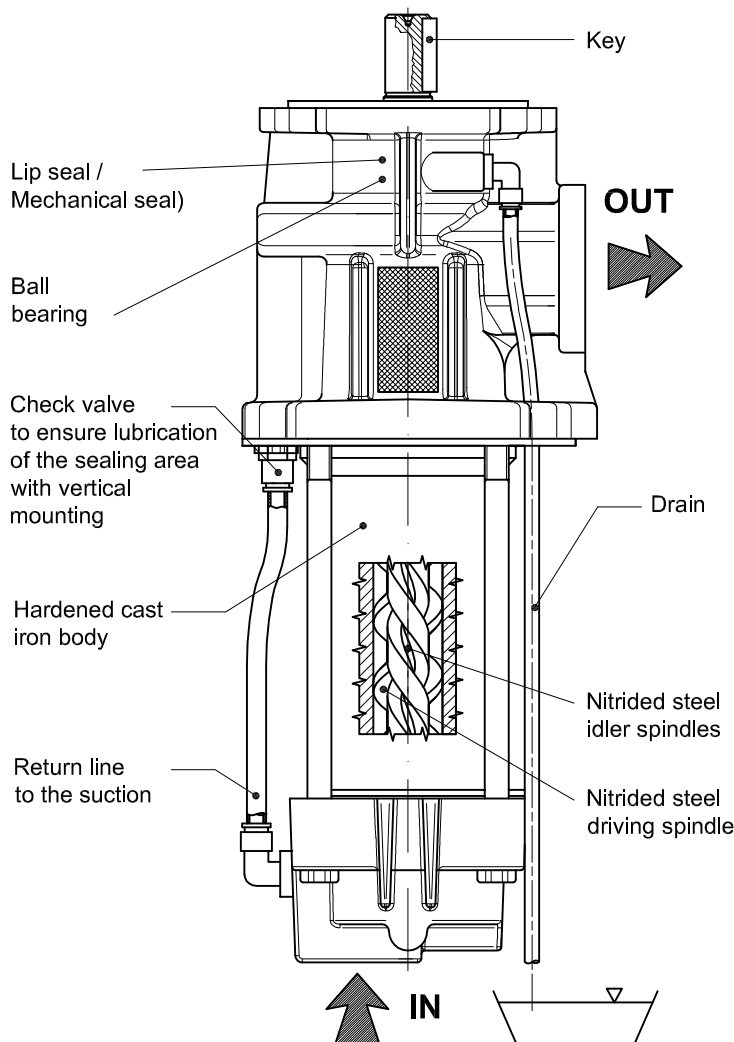
Screw pumps PWO

For cooling lubricants with low viscosity
and minimum lubricating properties (minimum oil: 4%)
Admissible delivery pressure (continuous) = 100 bar at 2900 rpm.

Main field of application

Machine tools high pressure cooling systems

Section and components



Functional characteristics standard version

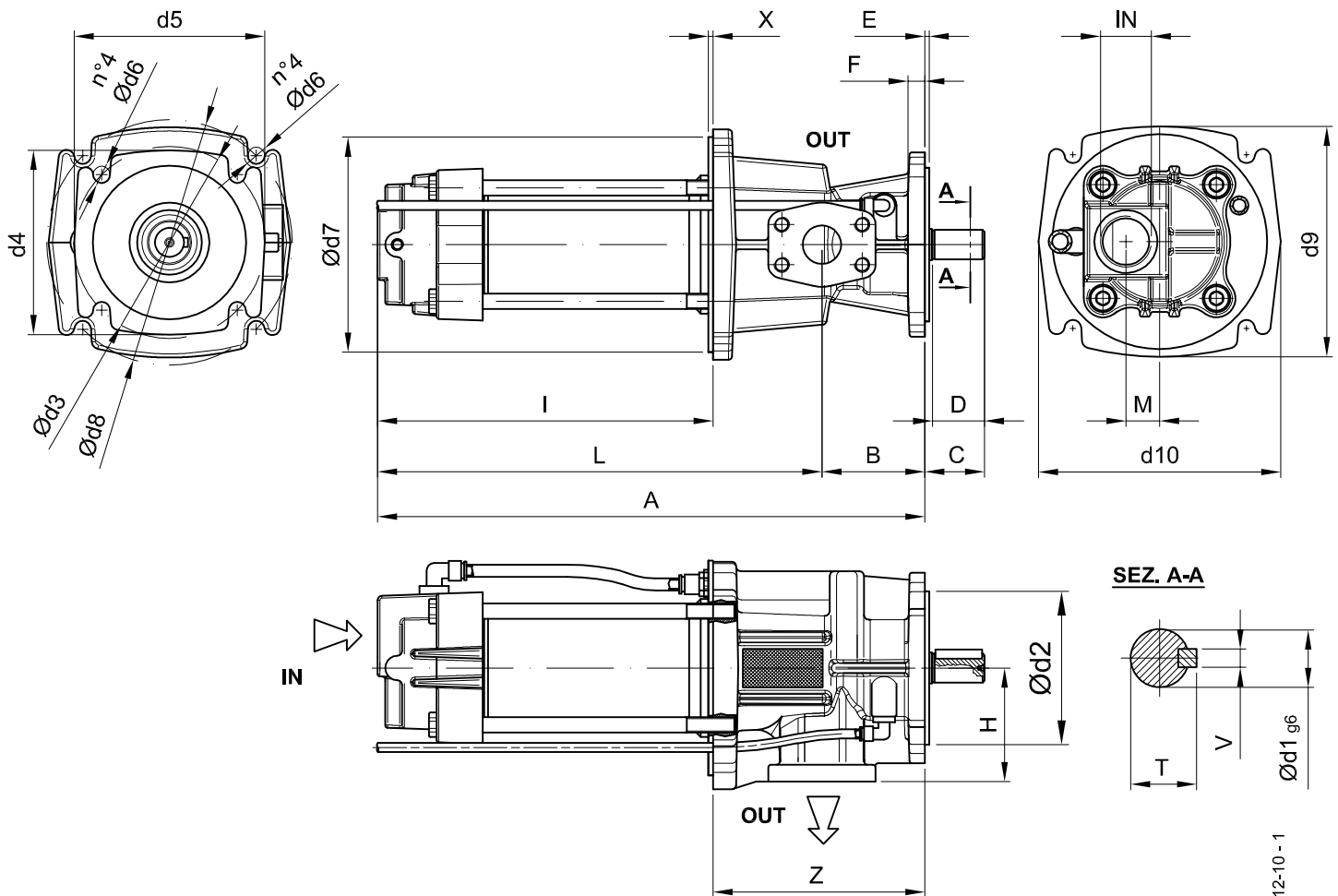
Delivery flow	14 to 600 l/min (3,7 to 159 USGPM)	
Admissible delivery pressure *	up to 100 bar (1450 psi) 2900 to 3500 rpm	
Admissible suction pressure	-0,5 to 10 bar (-7,3 to 145 psi)	For different values contact SEIM
Kinematic viscosity	1 (min oil: 4%) to 10 cSt	For different values contact SEIM
Admissible temperature	0 to 100 °C (32 to 212 °F)	For different values contact SEIM
Driving speed	2900 to 3500 rpm	
Average noise level	60 - 75 dB(A) at 2900 rpm according to pump dimension	
Recommended filtration	40 micron max, suction side (not abrasive contaminant) ISO 4406 19/16 - NAS 10	
Direction of rotation	clockwise, as seen from the driving side	

* Reduced pressure limits apply due to fluid viscosity and driving speed.
Consult the performance charts for the individual pump size.
For different functional characteristics, please contact our sales department.

Screw pumps PWO

For cooling lubricants with low viscosity
and minimum lubricating properties (min. oil: 4%).

Admissible delivery pressure (continuous) = 100 bar at 2900 rpm.



SD - STE - PWO - ENG - 12-10 - 1

Dimensional chart (mm)

MODEL	A	B	C	D	E	F	H	I	L	M	IN	OUT	T	V	d1	d2	d3	d4	d5	d6	d7	X	d8	d9	d10	Z
PWO025	357	67	39	34	3	10	74	219	290	22	1" GAS	1" SAE	21,5	6	19	100	125	120	124	12	140	3	160	150	158	138
PWO029	357	67	39	34	3	10	74	219	290	22	1" GAS	1" SAE	21,5	6	19	100	125	120	124	12	140	3	160	150	158	138
PWO032	400	67	39	34	3	10	74	262	333	22	1" GAS	1" SAE	21,5	6	19	100	125	120	124	12	140	3	160	150	158	138
PWO040	533	102	49	40	7	15	81	312	383	42	1 1/2" GAS	1 1/2" SAE	27	6	22	125	160	154	158	14	180	6	215	203	211	173
PWO045	583	102	49	40	7	15	81	362	433	42	1 1/2" GAS	1 1/2" SAE	27	8	24	125	160	154	158	14	180	6	215	203	211	173
PWO055	677	161.5	64	55	8	15	100	380	451	72	3" GAS	2" SAE	35	10	32	125	160	154	158	14	235	6	265	249	257	232.5
PWO060	731	161.5	64	55	8	15	100	434	505	72	3" GAS	2" SAE	35	10	32	125	160	154	158	14	235	6	265	249	257	232.5

SEIM srl
Via A. Volta 17
20090 Cusago (MI) ITALY
Tel. (+39) 02.90.39.21.1
Fax. (+39) 02.90.39.21.41
e-mail: seim@seim.it

www.seim.it

Screw pumps - PXF - PXFE083 series

For hydraulic oils, lubricating oils.

Admissible delivery pressure (continuous) = 30 bar at 2900 rpm.

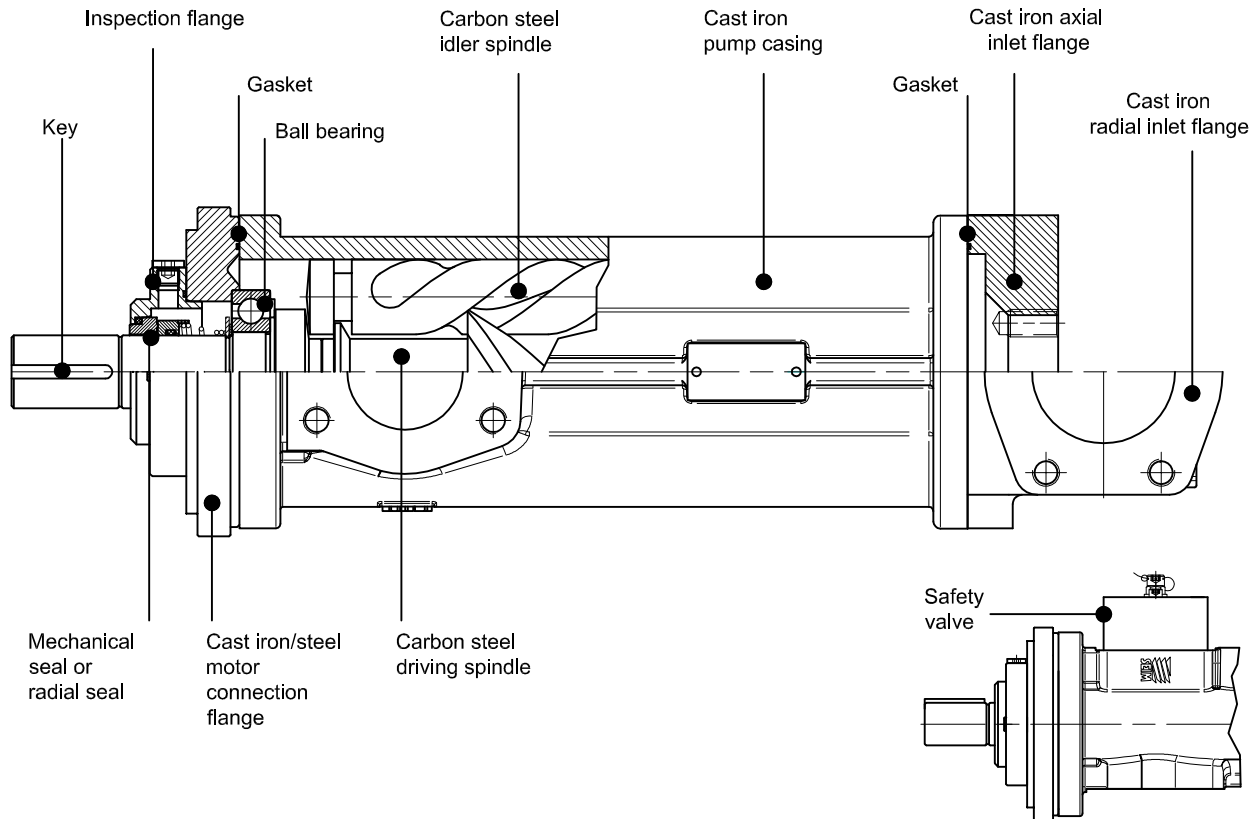
16 bar (PXF 083 to PXF156).



Main field of application:

Industrial purpose, low pressure range:

lubrication, cooling, filtration system.



Functional characteristic standard version

Delivery flow	27 to 4000 l/min (7 to 1057 USGPM)	
Admissible delivery pressure*	PXF032-72-PXFE083 up to 30 bar (435 psi), special versions up to 40 bar PXF083-156 up to 16 bar (232psi)	
Admissible suction pressure	- 0,5 to 10 bar (-7,3 to 145 psi)	For different values contact SEIM
Kinematic viscosity	10 to 400 cSt	For different values contact SEIM
Admissible temperature	0 to 120°C (32 to 248°F)	For different values contact SEIM
Driving speed	750 to 3600 rpm	
Average noise level	53 - 68 dB(A) at 2900 rpm according to pump dimension	
Recommended filtration	60 micron max, suction side (not abrasive contaminant) ISO4406 19 / 16 - NAS 10	
Direction of rotation	clockwise, as seen from the driving side	
* Standard valve setting (where provided)	PXF032 to PXF083 and PXFE083: mod.U: 2 to 16 bar (29 - 232 psi)	

* Reduced pressure limit apply due to fluid viscosity and driving speed.

Consult performance charts for the individual pump size.

For different functional characteristics, please contact our sales department.

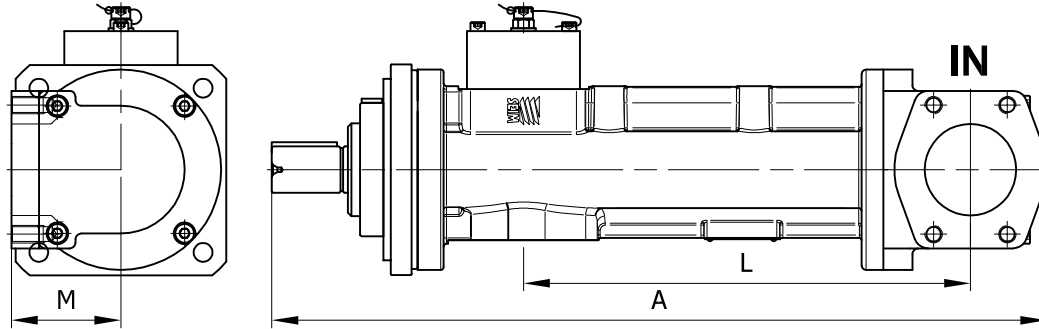
Screw pumps - PXF - PXFE083 series

For hydraulic oils, lubricating oils.

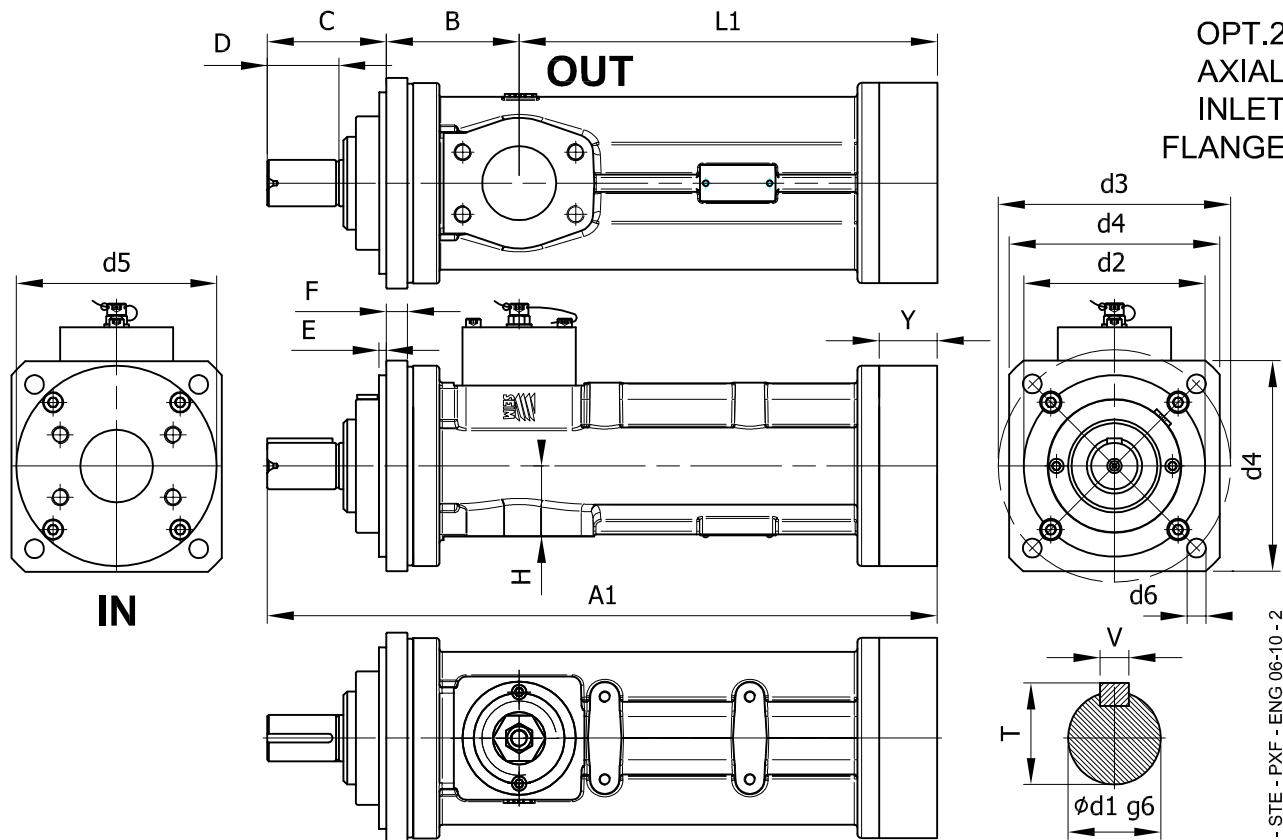
Admissible delivery pressure (continuous) = 30 bar at 2900 rpm.



OPT.1
RADIAL
INLET
FLANGE



OPT.2
AXIAL
INLET
FLANGE



SD - STE - PXF - ENG 06-10 - 2

Dimensional chart (mm)

MODELLO	A	A1	B	C	D	E	F	H	L	L1	M	SAE 3000		T	V	Inlet flange adjustable to 90° and 180°									
												IN	OUT			d1	d2	d3	d4	d5	d6	Y			
PXF032#4..	419	364	88	75	40	5	15	52	211	201	60	2"	1 1/2"	21,5	6	19	125	160	145	120	13	45			
PXF040#4..	448	393	88	75	40	5	15	52	240	230	60	2"	1 1/2"	21,5	6	19	125	160	145	120	13	45			
PXF045#4..	494	432	91,5	81	46	5	15	48,5	269	259	75,5	2 1/2"	2"	35	10	32	125	160	145	138	13	50			
PXF055#4..	534	472	91,5	82	46	5	15	48,5	308	298	75,5	2 1/2"	2"	35	10	32	125	160	145	138	13	50			
PXF060#4..	633	528	88	83,5	46	5	18	73,5	387	356	100	4"	2 1/2"	35	10	32	160	200	195	174	18	50			
PXF072#4..	718	613	88	101	58	5	18	73,5	455	424	100	4"	2 1/2"	35	10	32	160	200	195	174	18	50			
PXFE083#3..	754	604	206	76	66	5	32	77	382	322	130	5"	4"	43	12	40	200	250	ø300	202	22	40			

SEIM srl
Via A. Volta 17
20090 Cusago (MI) ITALY
Tel. (+39) 02.90.39.21.1
Fax. (+39) 02.90.39.21.41
e-mail: seim@seim.it

Ask pumps drawing for all dimensional details.

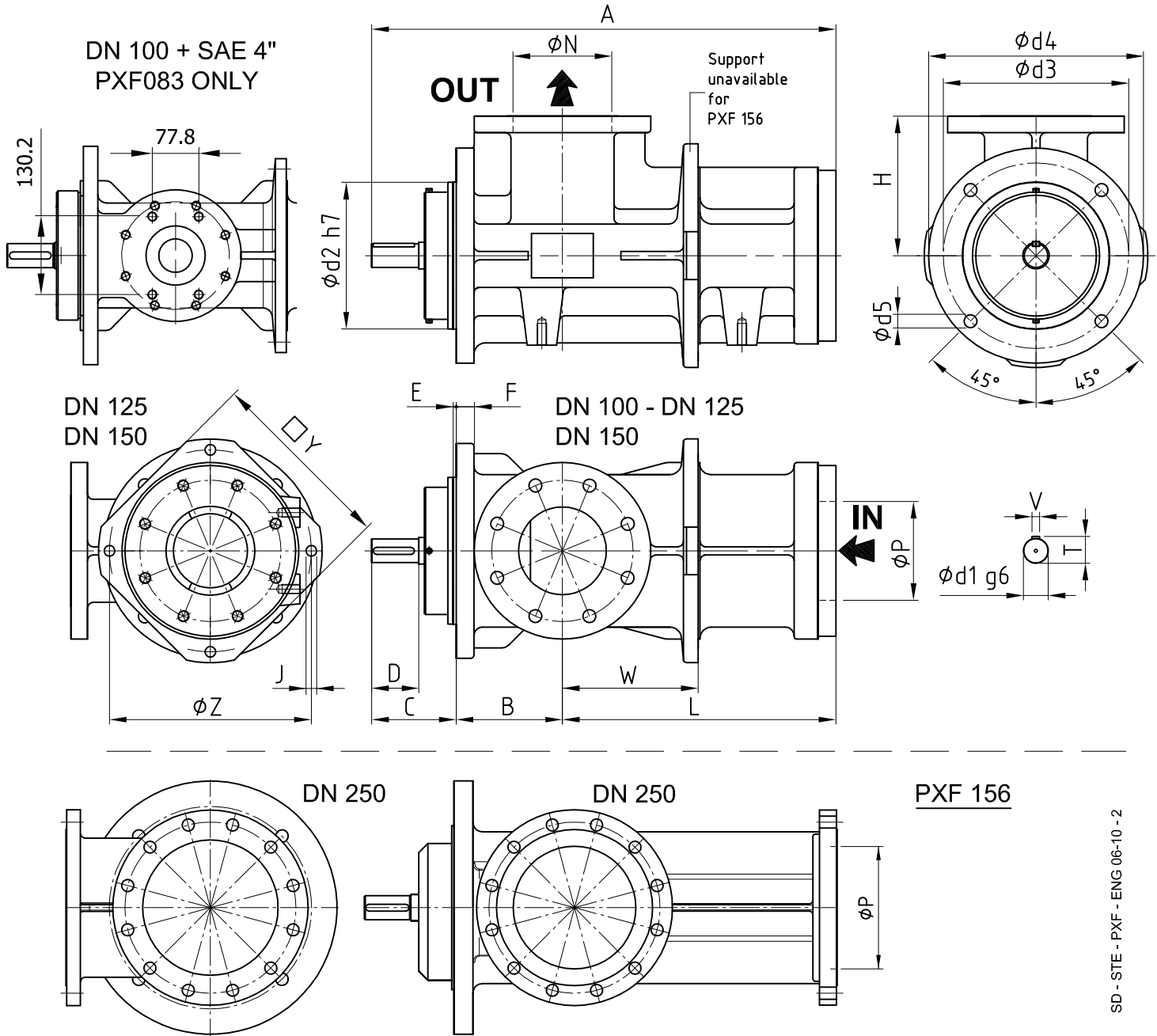
www.seim.it

SEIM reserves the right to introduce dimensional changes or variation to the products of this technical data.

Screw pumps - PXF - PXFE083 series

For hydraulic oils, lubricating oils.

Admissible delivery pressure (continuous) = 16 bar.



SD - STE - PXF - ENG 06-10 - 2

Dimensional chart (mm)

(X) Without valve.
Option / radial suction - special.

MODELLO	A	B	C	D	E	F	H	L	N	P	T	V	d1	d2	d3	d4	d5	Z	J	Y	W
PXF083#3	632	154	128	80	5	25	77	350	DN 100 PN 16 SAE 4"	DN 125 PN 16	43	12	40	250	315	365	22	289	13	264	186
(X) PXF102#3	690	170	145	80	5	30	233	375	DN 125 PN 16	DN 150 PN 16	43	12	40	250	315	365	22	327	18	300	178
(X) PXF126#3	808	180,5	143	80	5	30	237	484	DN 150 PN 16	DN 150 PN 16	43	12	40	250	315	365	22	343	18	320	231
(X) PXF156#3	896	250	186	97	5	39	300	460	DN 250 PN 16	DN 250 PN 16	53,5	14	50	340	420	470	26	-	-	-	-

SEIM srl
Via A. Volta 17
20090 Cusago (MI) ITALY
Tel. (+39) 02.90.39.21.1
Fax. (+39) 02.90.39.21.41
e-mail: seim@seim.it

Ask pumps drawing for all dimensional details.

www.seim.it

SEIM reserves the right to introduce dimensional changes or variation to the products of this technical data.

Screw pumps – PZ series

For hydraulic oils, lubricating oils. Special version for heavy fuel.

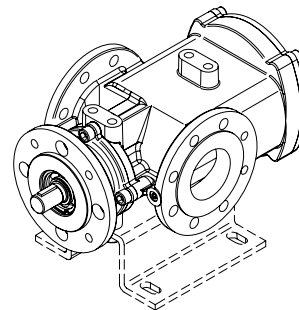
Admissible delivery pressure (continuous) = 16 bar from 1000 to 1800 rpm.



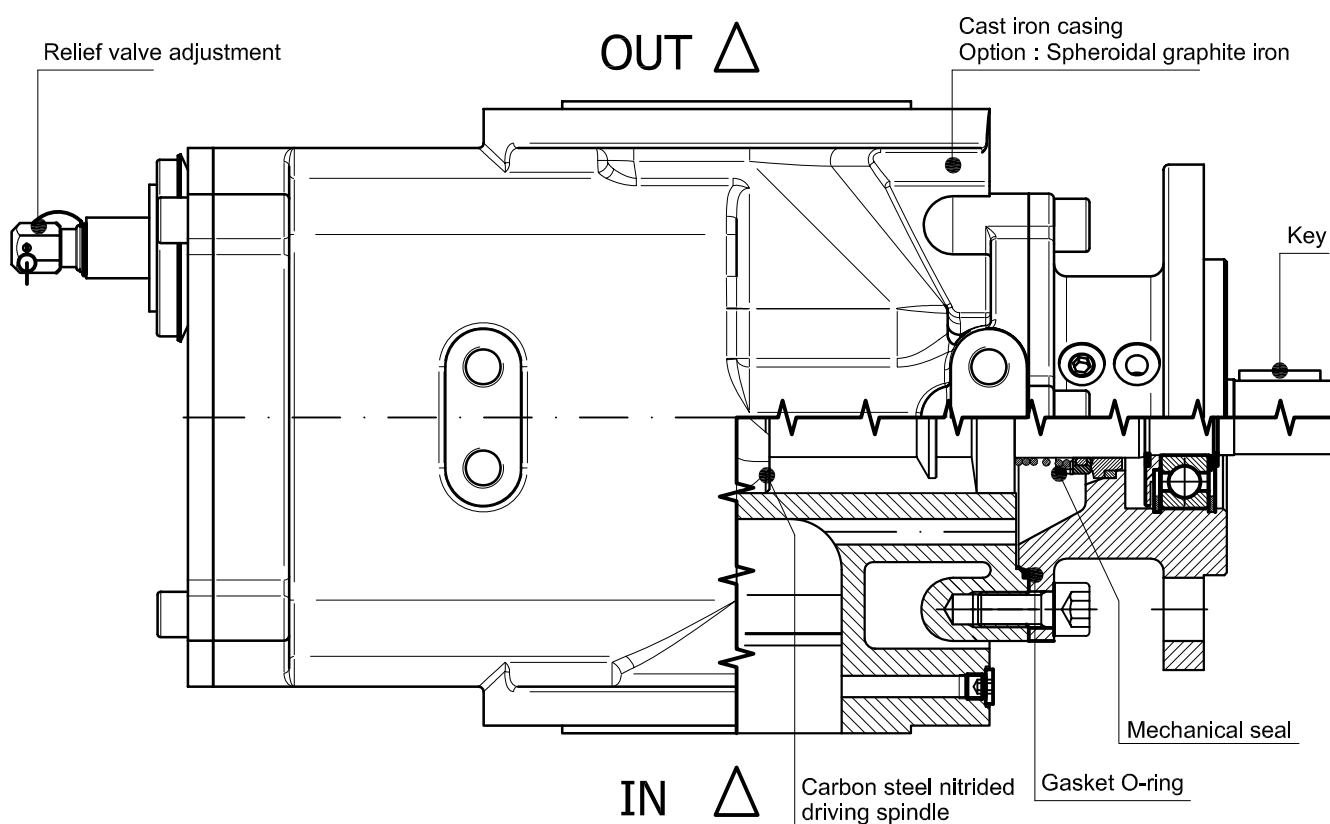
Main field of application:

Pumps for lubrication systems and auxiliary cooling, with relief valve.

Special version magnetic coupling .



Section and components



Functional characteristics standard version

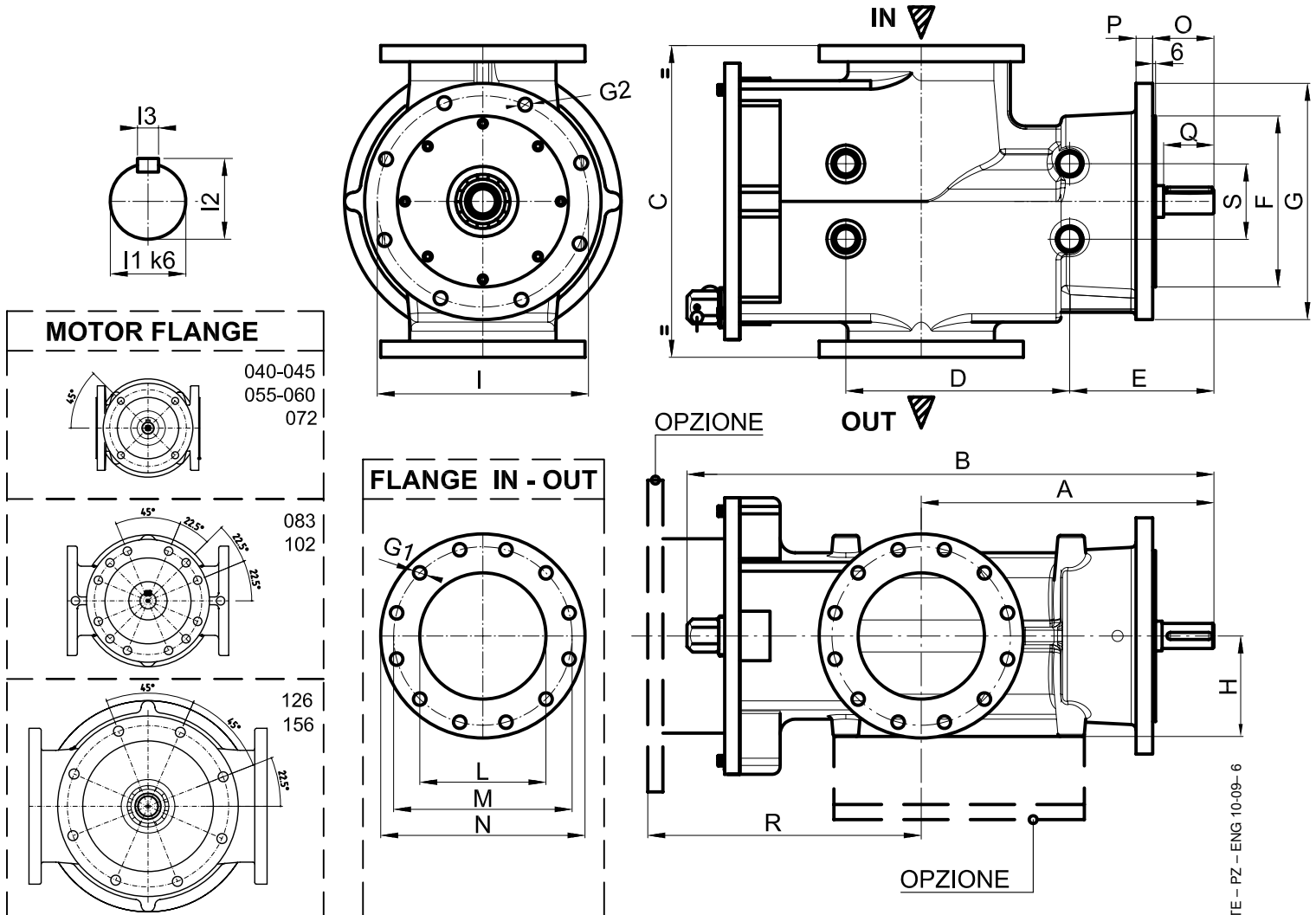
Delivery flow	up to 5400 l/min (up to 1425 USGPM)	
Admissible delivery pressure*	up to 16 bar (232 psi) from 1000 to 1800 rpm	
Admissible suction pressure	from -0,5 to 10 bar (from -7,3 to 145 psi)	For different values contact SEIM
Kinematics viscosity	from 10 to 400 cSt STD (< 5000 cSt special)	For different values contact SEIM
Admissible temperature	from 0 to 120 °C (from 32 to 248 °F)	For different values contact SEIM
Driving speed	1500 – 1800 and up to 3000 - 3600 rpm	
Average noise level	65 ÷ 75 dB(A) at 1800 rpm according to pump dimension	
Reccomended oil filtration	60 micron max (not abrasive contaminant) ISO4406 19 / 16 – NAS 10	
Direction of rotation	Clockwise, as seen from the driving side	

* Reduced pressure limits apply due to fluid viscosity and driving speed
Consult the performance charts for the individual pump size
For different functional characteristics, please contact our sales department

Screw pumps – PZ series

For hydraulic oils, lubricating oils. Special version for heavy fuel.

Admissible delivery pressure (continuous) = 16 bar from 1000 to 1800 rpm



DS - STE - PZ - ENG 10-09-6

Dimensional chart (mm)

SIZE	A	B	C	D	E	F	G	G1	G2	H	I	I1	I2	I3	L	M	N	O	P	Q	R	S
PZ 040#3...	194	353	220	//	//	100	160	18	11	//	125	19	21.5	6	DN50	125	165	30	14	30	250	//
PZ 045#3...						(k6)						PN16										
PZ 055#3...	237	519	250	180	137	125	200	18	14	92.5	160	28	31	8	DN80	160	200	52	16	40	350	40
PZ 060#3...						(k6)						PN16										
PZ 072#3...	270	561	270	180	170	160	234	18	18	105	200	32	35	10	DN100	180	220	49	18	42	350	40
PZ 083#3...						(k6)						PN16										
PZ 102#3...	415	750	420	350	190	224	321	22	22	128	280	42	45	12	DN150	240	285	70	28	59	370	120
PZ 126#3...						(k6)						PN16										
PZ 156#3...	570	982	620	445	275	340	470	25	26	197	420	50	53.5	14	DN250	355	406	110	33	97	544	150
PZ 156#3...						(h8)						PN16										

SEIM srl
 Via A. Volta 17
 20090 Cusago (MI) ITALY
 Tel. (+39) 02.90.39.21.1
 Fax (+39) 02.90.39.21.41
 e-mail: seim@seim.it

www.seim.it

SEIM reserves the right to introduce dimensional changes or variation to the products of this technical data

MODULO PER RICHIESTA D'OFFERTA

INQUIRY REQUEST FORM

SEIM S.r.l. – Via A. Volta, 17 – 20090 Cusago (MI) – Italy
 da trasmettere via fax al no. - *to be sent by fax at no.* +39 02 90392141
 or mail to: seim@seim.it



* campi obbligatori *mandatory fields*

MITTENTE Azienda, Località, Persona da contattare Recapiti – tel/fax/E-mail <i>SENDER Company, Country, Person to be contacted Phone no./Fax no./E-mail</i>	*
---	---

Descrizione dell'applicazione <i>Brief application description</i>	*
---	---

* Installazione – <i>Installation</i> <input checked="" type="checkbox"/> Evidenziare <i>Please tick</i>		Immersa - <i>Submersed</i>
		Esterna, orizzontale - <i>External, horizontal</i>
		Esterna, verticale - <i>External, vertical</i>
		Altro (Treppiede,) - <i>Other (tri-pod,)</i>

Quantità <i>Quantity</i>	n.	*
-----------------------------	----	---

Portata richiesta <i>Required flow rate</i>	lpm	*
--	-----	---

Velocità azionamento <i>Driving speed</i>	rpm	*
--	-----	---

Pressione (normale / massima) <i>Pressure (operating / maximum)</i>	bar	*
--	-----	---

Tipo di Fluido e Viscosità <i>Type of Fluid and Viscosity</i>	cSt	*
--	-----	---

Temperatura fluido (min.* / norm.* / max) <i>Oil/medium Temp. (min.* /operating* / max.)</i>	°C	
---	----	--

Temperatura ambiente (min.* / norm.* / max) <i>Ambient Temperature (min.* /operating* / max.)</i>	°C	
--	----	--

Grado di Filtrazione <i>Degree of filtration</i>	ISO NAS	*
---	------------	---

Classificazione Area, se applicabile <i>Hazardous Area classification, if applicable</i>		
---	--	--

Accessori richiesti <i>Accessories requested</i> <input checked="" type="checkbox"/> Evidenziare <i>Please tick</i>		Valvola di sicurezza <i>Relief Valve</i>
		Lanterna + giunto <i>Bell-housing + coupling kit</i>
		Kit di ricambio <i>Spares kit</i>
		Motore <i>El. motor</i>

Altre notizie <i>Other information, if any</i>	
--	--



SEIM S.r.l.

Via Volta, 17
20090 Cusago - Milano - Italy
Tel. +39 02 903 92 11
Fax +39 02 903 921 41
www.seim.it
e-mail: seim@seim.it