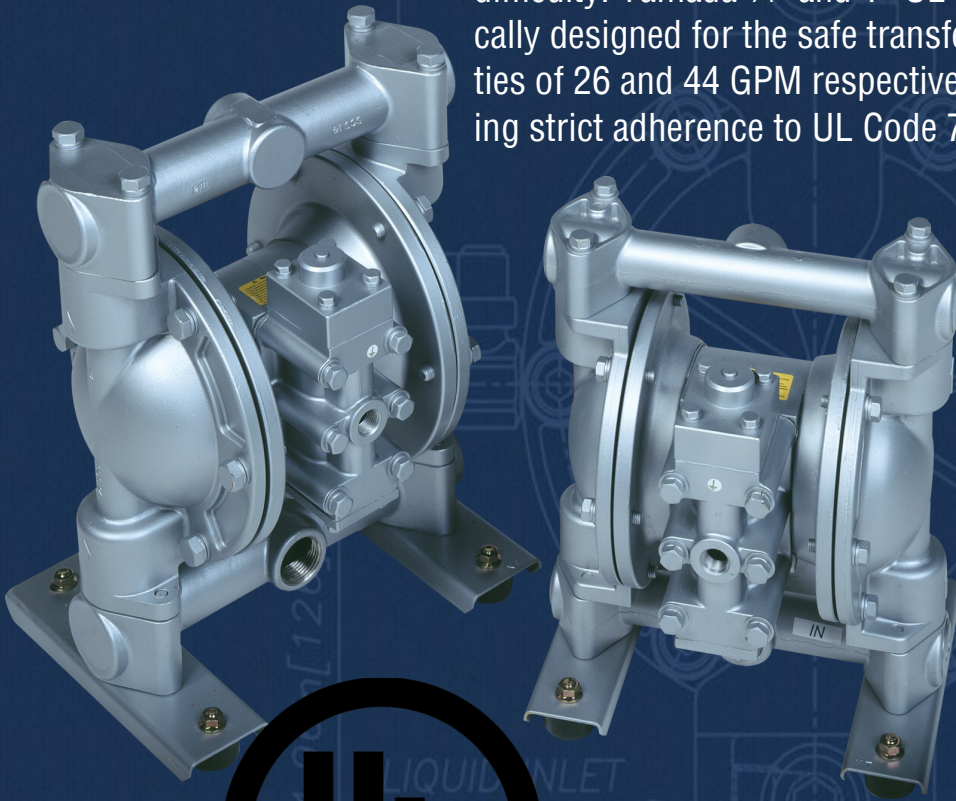


UL Listed Aluminum Pumps

The **Proof's**
in the **Pump**

When transferring petroleum products using air-operated double diaphragm pumps, the low air supply and discharge pressures mandated by Underwriters Laboratories Code 79 requirements can significantly affect overall pumping efficiency. As a result, it is often necessary to specify a larger, more expensive pump to meet desired transfer rates. Fortunately, Yamada has developed a series of UL Listed pumps to overcome this difficulty. Yamada ¾" and 1" UL Listed diaphragm pumps were specifically designed for the safe transfer of volatile liquids at maximum capacities of 26 and 44 GPM respectively (depending on model) while maintaining strict adherence to UL Code 79.



LISTED
AIR OPERATED
DIAPHRAGM PUMPS FOR
PETROLEUM PRODUCTS 19GL

- Meets UL Code 79 Requirements
- Maximum transfer capacities as high as 44 GPM (1" model)
- Patented, self-lubricating air valve never needs internal or external lubricating
- Non-stalling air valve which includes a non-centering, spring assisted shuttle ensures a positive shift every time
- Outside accessible air valve allows for inspection and maintenance without removing the pump from service
- Short stroke design reduces flex, extends diaphragm life

APPLICATIONS

- GASOLINE
- AVIATION FUEL
- KEROSENE
- FUEL OIL
- DIESEL FUEL
- WASTE OIL
- AND OTHER VOLATILE PETROLEUM PRODUCTS

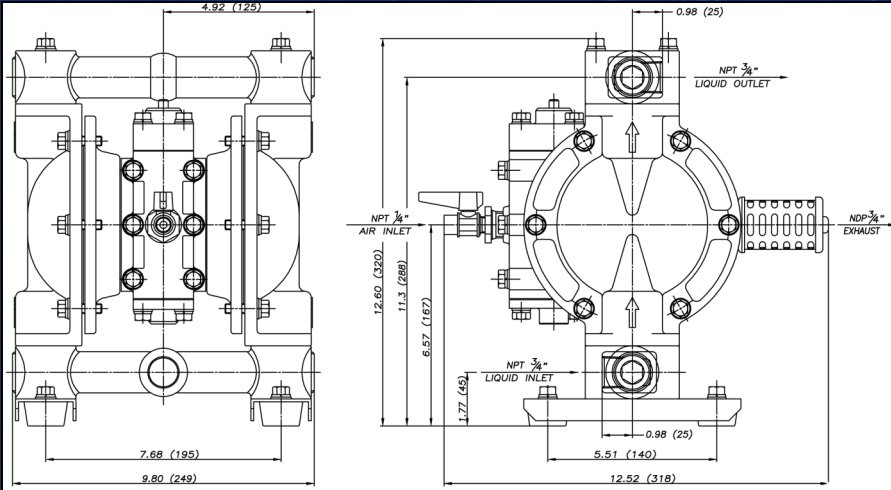
The **Proof's** in the **Pump**

CALL TOLL FREE 800.990.7867

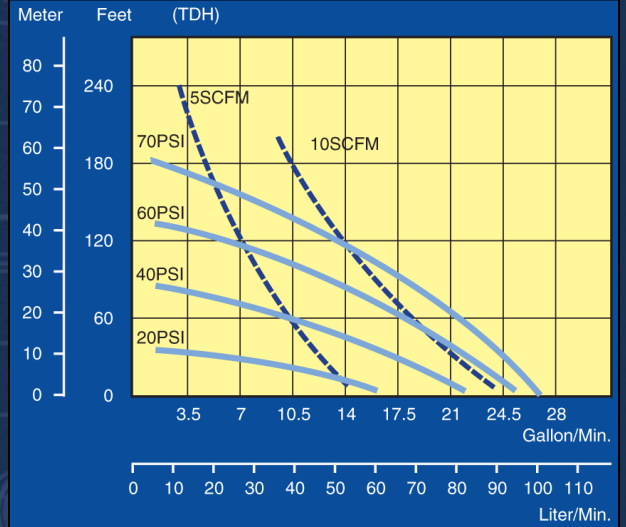
Yamada America, Inc.
955 East Algonquin Rd
Arlington Heights, IL 60005
Phone: 847.631.9200
Fax: 847.631.9273
www.yamadapump.com
sales@yamadapump.com

NDP SERIES UL LISTED ALUMINUM PUMPS

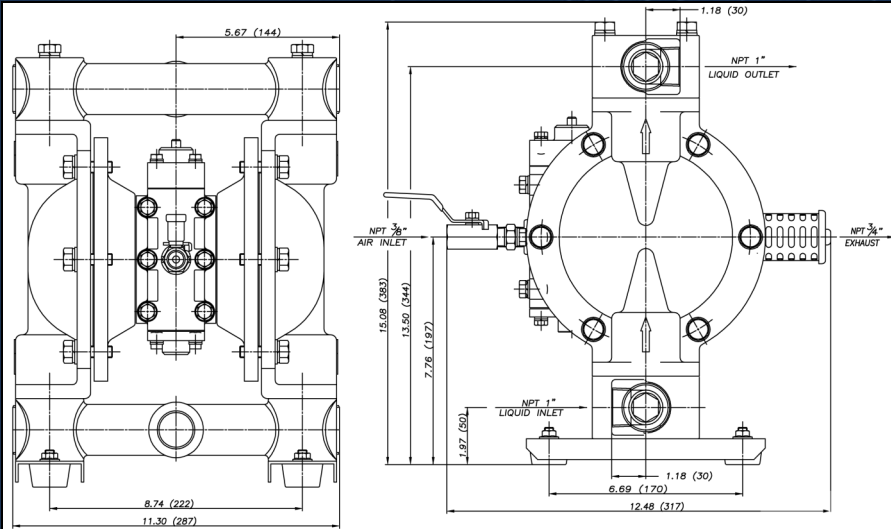
NDP-20BA UL



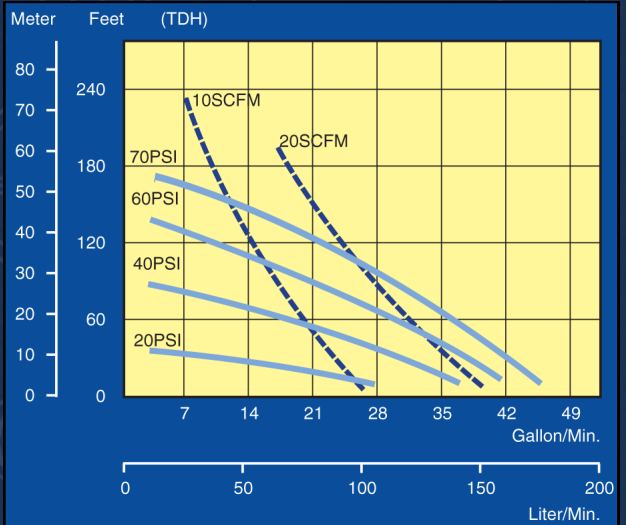
NDP-20BAN UL



NDP-25BA UL



NDP-25BAN UL



Specifications	NDP-20BAN-UL	NDP-25BAN-UL
PORT SIZE	3/4"	1"
Elastomer Material	Buna N	Buna N
Discharge Volume/Cycle	0.14 gal. (530cc)	0.23 gal. (862cc)
Maximum Cycle/Minute	135	168
Port Dimensions: Fluid Inlet & Discharge	3/4" female NPT	1" female NPT
Air Inlet	1/4" female NPT	3/8" female NPT
Air Exhaust	3/4" female NPT	3/4" female NPT
Maximum Solid Size	<1/16" (1.6mm)	<3/16" (4.8mm)
Air Supply Pressure	70 PSI	70 PSI
Net Weight	18.1 Lbs. (8.2 kg.)	28.6 Lbs. (13.0 kg.)

Curves based on 70°
F
water, 1Ft. flooded
suction.
Note: UL 79 Re-
quirements restrict

Download CAD drawings at
www.yamadapump.com



LISTED
AIR OPERATED
DIAPHRAGM PUMPS FOR
PETROLEUM PRODUCTS 19GL

Yamada

Your local distributor:

Form#UL0309