

DSM
Control

Peristaltic Metering Pump

A new generation of latest technology metering pumps with peristaltic head.

The new **DSM CONTROL** meters reliably and is simple to operate. It is a real intelligent peristaltic metering pump.

Valve-free metering with the accuracy of a diaphragm metering pump, with full use of the properties of a peristaltic pump. The applications of this metering pump include **abrasive, high-viscosity, strongly gaseous, shear-sensitive or chemically aggressive fluids**.

The dosing head makes quick and straightforward hose replacement possible with an **unique exchange** technique.

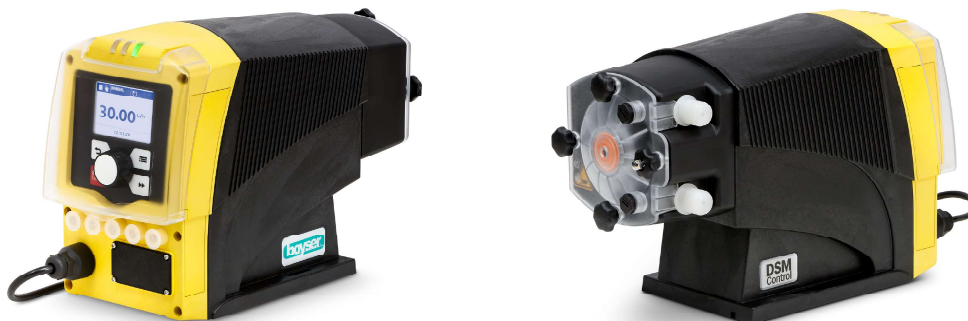
The display provides the fitter with precise instructions

about the steps to be completed when replacing the hose.

The high-performance tube used is made from a thermoplastic vulcanisate (TPV) and **guarantees exceptional chemical resistance** and a long service life.

The **intuitive user interface** with click wheel ensures simple operation of the peristaltic pump.

A brushless direct current motor forms the heart of the **DSM CONTROL**. Its ingenious control provides for precise metering and **reduced pump capacity** with continuous metering up to 6 ml/h.



1 MAIN FEATURES

- Easy adjustment of the dosing rate in l/h, ml/h or gal/h.
- Direct flow reading in the digital display.
- Batch Application: In volume or in time.
- Integrated calendar for function automation.
- Calibration function.
- Alarm for hose replacement (preventive maintenance).
- Several control options: 0/4-20 mA, contact control, integrated timer.
- Connection to process control systems via BUS (PROFIBUS, Profinet, CANbus).
- 3 configurable inputs and outputs: used as signal relays or as trigger for timer programs.

2 MAIN BENEFITS

- Quick, easy and tool-free tube change.
- Suitable for abrasive, highly viscous, sensitive media or very gaseous media.
- Viscosities of up to 100,000 mPas.
- High-precision dosing.
- Many different control options, such as using an analogue 0/4-20 mA signal, contact controller, timer or via process control systems.

Peristaltic Metering Pump

3 FIELD OF APPLICATION

- Potable water and waste water treatment
- Food and beverage industry
- Paper industry
- Chemical industry
- Chemical distributors
- Electroplating
- Swimming pools
- All industrial applications, either as a stand-alone unit or integrated in a complete system.



4 TECHNICAL DATA

Type	Maximum back pressure bar	Pump capacity	Max. speed rpm	Connector size o Ø x i Ø	Suction lift m WC	Intake head m WC	Shipping weight Kg
0518	5	6 ml/h-18 l/h	100	12x9	9	9	5.8
0530	5	10 ml/h-30 l/h	100	12x9	9	9	5.8
0730	7	10 ml/h-30 l/h	100	12x9	9	9	5.8
0565	5	22 ml/h-65 l/h	100	12x9	9	9	5.8

Hose material:	Thermoplastic vulcanisate (TPV), polyurethane (PUR)
Hose connectors:	PVDF/PTFE
Metering reproducibility:	±2% with retracted hose (after approx. 200 revolutions)
Electrical connection:	100 - 230 V ±10%, 50/60 Hz
Nominal power:	approx. 50 W
Degree of protection:	IP 66, NEMA 4X Indoor
Permissible ambient temperature:	0 ... 45 °C

All data refers to water at 20 °C.



www.boyser.com

