

I Application

The PBC series agitators are vertical direct motor-driven agitators with clamp. They can be used in processes of mixing, dissolution, dispersion, and maintenance whenever powerful and high-speed agitation is required in the food processing, cosmetics, pharmaceutical or chemical industries.

The agitators can be fitted to small tanks of up to 1,500 liters for work with low-viscosity products.

I Operating principle

These agitators are fixed to the wall of the tank by means of a clamp, thanks to the joint, they can be inclined to the required position.

The rotation of the propeller makes the fluid flow to the bottom of the tank and then up to the surface of the fluid along the tank wall opposite to the wall to which the agitator is fitted. This effect is promoted if the bottom of the tank is curved.

I Design and features

Agitator with clamp.

Retainer.

Bearing support.

Propeller attached to shaft and shaft attached to half-shaft by Allen setbolts.

IEC B14 motors, 1500 rpm, IP 55, F-class insulation.

Maximum power 0,75 kW.

Lineflux propeller (Type 18).



I Materials

Parts in contact with the media	AISI 316L
Retainer	NBR
Bearing support	Aluminum

I Options

Retainer in FPM.

One-piece shaft.

Shaft and propeller lined with plastic material for use with corrosive products.

Welded propeller with $Ra \leq 0,5 \mu m$ surface finish.

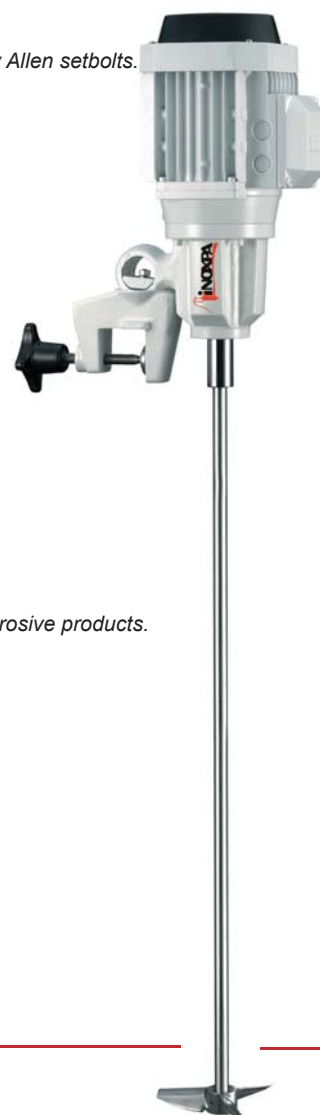
Motor shroud.

Motors with other protections.

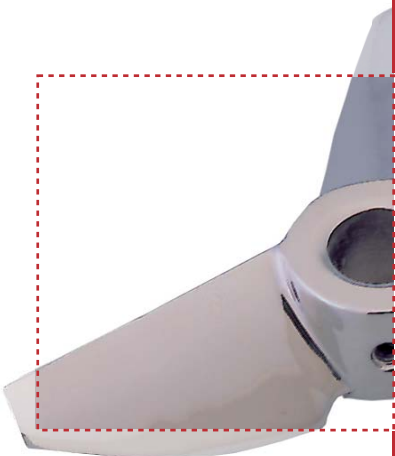
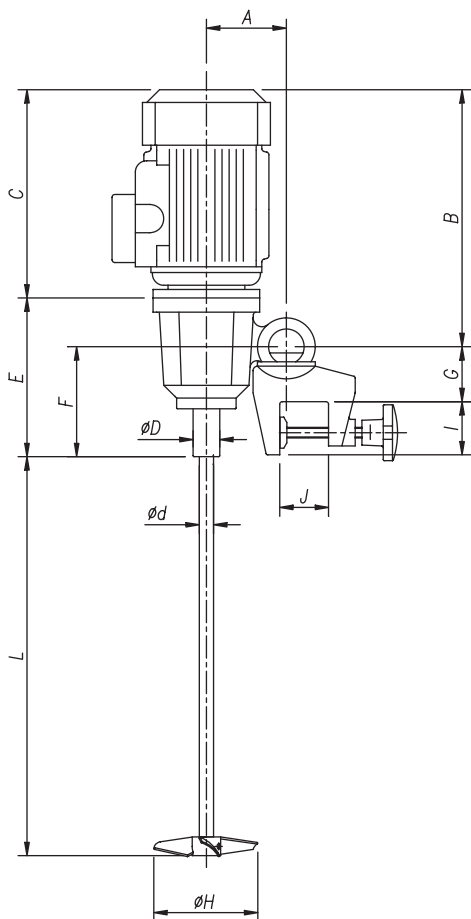
Motors: 950 rpm or 750 rpm.

Geared motors or variable speed drives.

Pneumatic drive.



I Technical specifications and dimensions



AGITATOR TYPE			PBC 1.18-4007-1-100		PBC 1.18-4007-1-130		PBC 1.18-4007-1-150		PBC 1.18-6005-1-130		PBC 1.18-6005-1-150	
Motor power			[kW]	0,75			0,55					
Speed			[rpm]	1415			940					
Volume <i>[H₂O]</i>			[m³]	0,1 0,6	0,2 0,8	0,4 1,5	0,1 0,7	0,15 1				
Dimensions	A	[mm]	90									
	B		290									
	C		234									
	ØD		30									
	E		180									
	F		124									
	G		55									
	I		60									
	J max.		45									
Agitator shaft	Ød	[mm]	16									
	L max.		1250									
Lineflux propeller	ØH	[mm]	100	130	150	130	150					
Weight			[kg]	16				16,5				